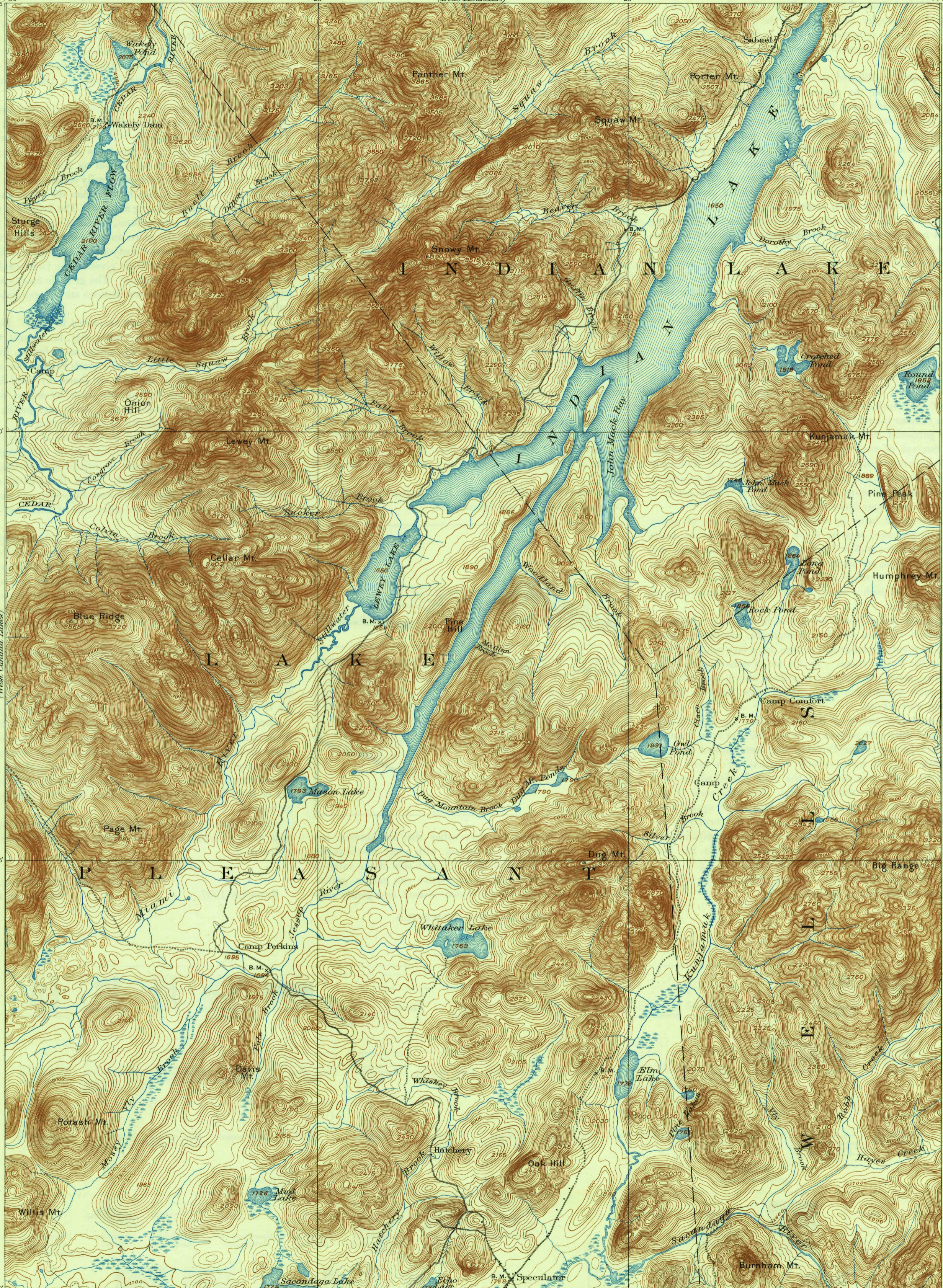


FILE COPY
Inspection and Editing



16 Miles
14
13
12
11
10
9
8
7
6
5
4
3
2
1
0
1
2
3
4
5
6
7
8
9
10
11
12
13
14
15
16 Miles

H.M. Wilson, Geographer in charge.
Triangulation by W.J. Peters.
Topography by W.H. Lovell.
Surveyed in 1896-97 in cooperation with the State of New York.

Scale 62500
1 2 3 4 Miles
1 2 3 4 Kilometers
Contour interval 20 feet.
Datum is mean sea level.

USGS
Historical File
Topographic Division

Edition of April 1902, reprinted 1938
Polyconic projection, North American datum

INDIAN LAKE, N.Y.

MAY 23 1938