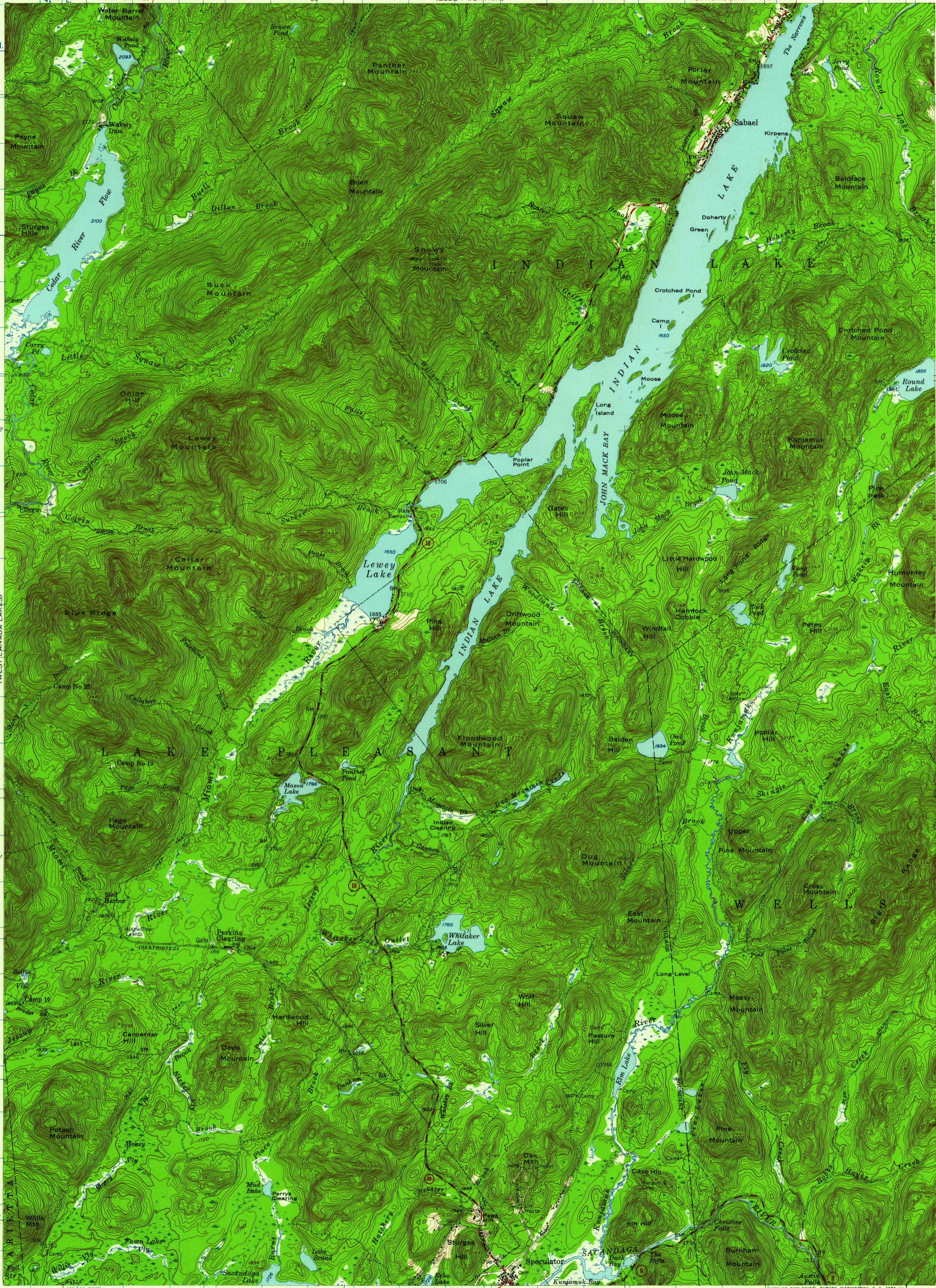


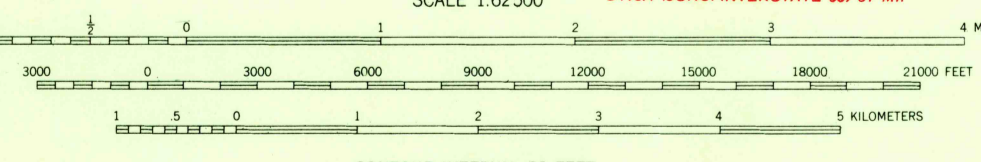
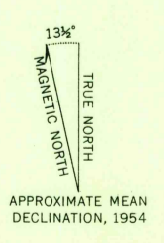
(FRANKLIN LAKE)

(NEWCOMB)

74°30' 43°45' 10 MI. TO N.Y. 26 25' (BLUE MOUNTAIN) 20' (INDIAN LAKE UNCL. N.Y. 28) 3.8 MI. 520 000 FEET 74°15' 43°45'



Mapped, edited, and published by the Geological Survey  
Control by USGS and USCGS  
Topography from aerial photographs by photogrammetric methods. Aerial photographs taken 1953. Field check 1954  
Polyconic projection. 1927 North American datum  
10,000-foot grid based on New York coordinate system, east zone  
1000 meter Universal Transverse Mercator Grid ticks.  
zone 18, shown in blue  
Entire area lies within the Adirondack State Park  
Unchecked elevations are shown in brown



CONTOUR INTERVAL 20 FEET  
DATUM IS MEAN SEA LEVEL

THIS MAP COMPLIES WITH NATIONAL MAP ACCURACY STANDARDS  
FOR SALE BY U. S. GEOLOGICAL SURVEY, WASHINGTON 25, D. C.  
A FOLDER DESCRIBING TOPOGRAPHIC MAPS AND SYMBOLS IS AVAILABLE ON REQUEST

USGS  
Historical File  
Topographic Division

ROAD CLASSIFICATION  
Medium-duty ——— Light-duty  
Unimproved dirt - - - - -  
○ State Route



U.S.G.S.  
FILE COPY  
TOPOGRAPHIC DIVISION

INDIAN LAKE, N. Y.  
N4330—W7415/15  
1954

MAR 10 1965

6165