

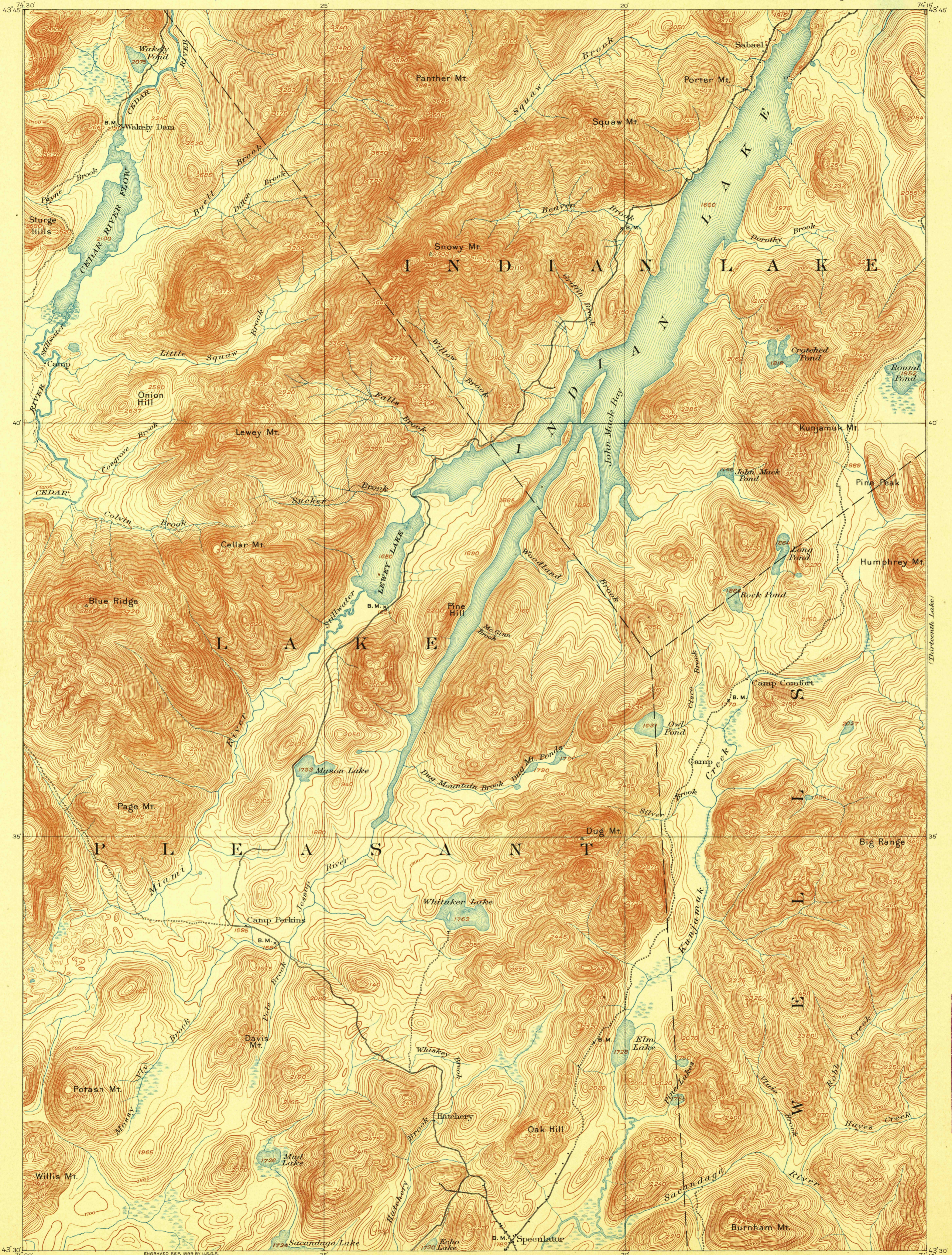
TOPOGRAPHIC SHEET

U.S. GEOLOGICAL SURVEY  
CHARLES D. WALCOTT,  
DIRECTOR

STATE OF NEW YORK  
CAMPBELL W. ADAMS,  
STATE ENGINEER AND SURVEYOR

NEW YORK  
(HAMILTON CO.)  
INDIAN LAKE QUADRANGLE

(Newcomb)

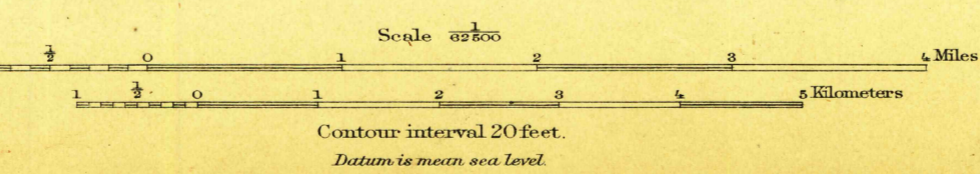


U.S.G.S.  
**FILE COPY**  
Ed. Div. Topographic Maps.

U.S.G.S.  
**FILE COPY**  
Ed. Div. Topographic Maps.

H.M. Wilson, Geographer in charge.  
Triangulation by W.J. Peters.  
Topography by W.H. Lovell.  
Surveyed in 1896-97.

U.S.G.S.  
**FILE COPY**  
Ed. Div. Topographic Maps.



2116  
U.S. Geological Survey,  
MAR 10 1900 2116  
Ed. Div. Topographic Maps.

USGS  
Historical File  
Topographic

Indian Lake N.Y.