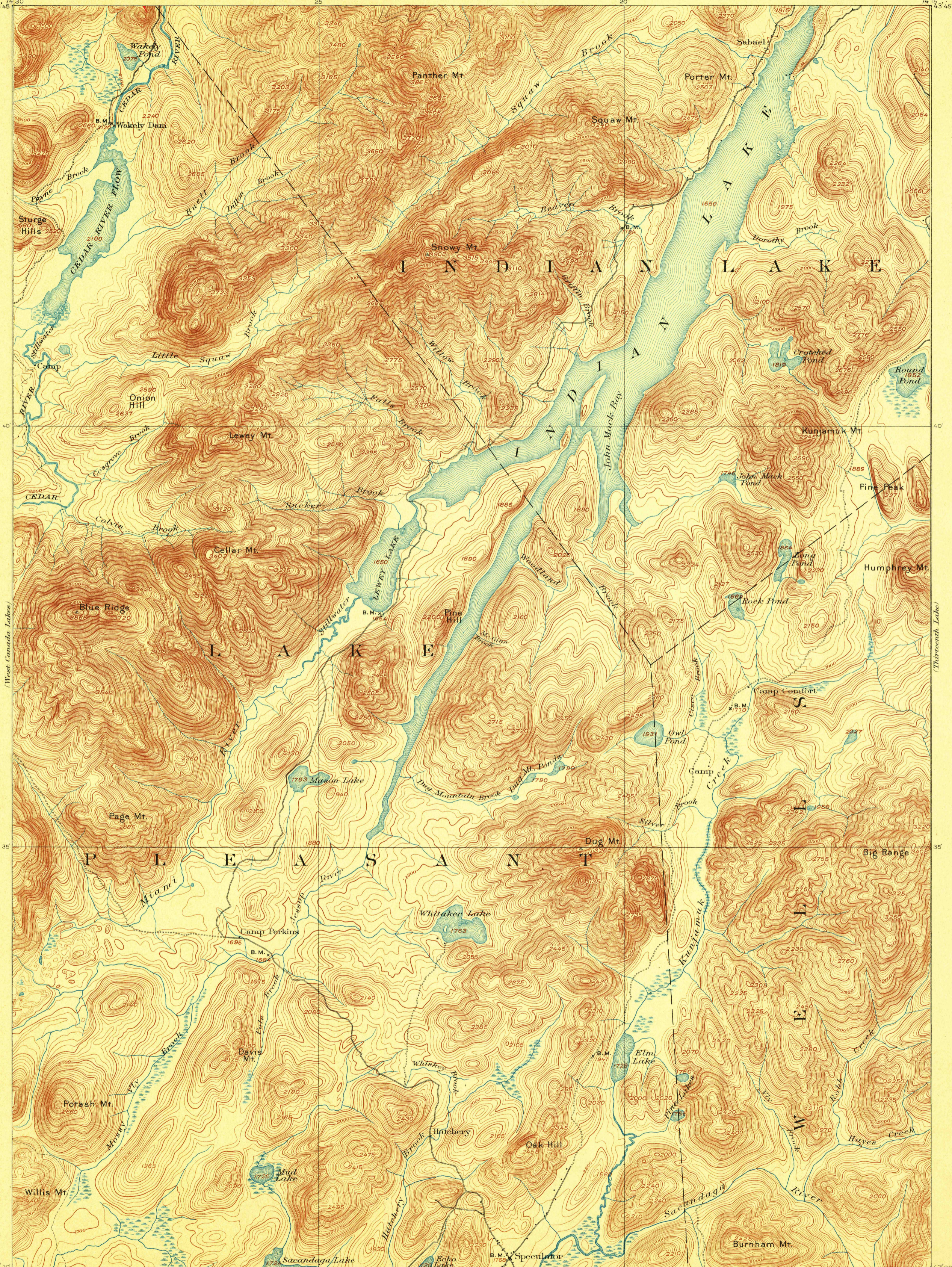
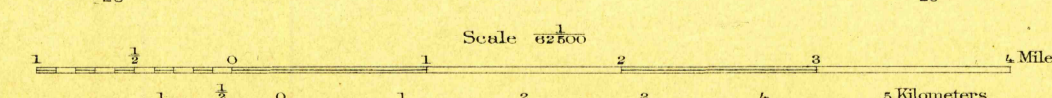


U.S.G.S.
FILE COPY
Ed. Div. Topographic Maps.



U.S.G.S.
FILE COPY
Ed. Div. Topographic Maps.

H.M. Wilson, Geographer in charge.
Triangulation by W.J. Peters.
Topography by W.H. Lovell.
Surveyed in 1896-97 in cooperation with the State of New York.



Scale 1:62,500
Contour interval 20 feet.
Datum is mean sea level.

ENGRAVED SEP. 1899 BY U.S.G.S.
Edition of April 1902.

USGS
Historical File
Topographic Division

U.S. Geological Survey,
MAY 31 1902 2626
Ed. Div. Topographic Maps.

Indian Lake N.Y.