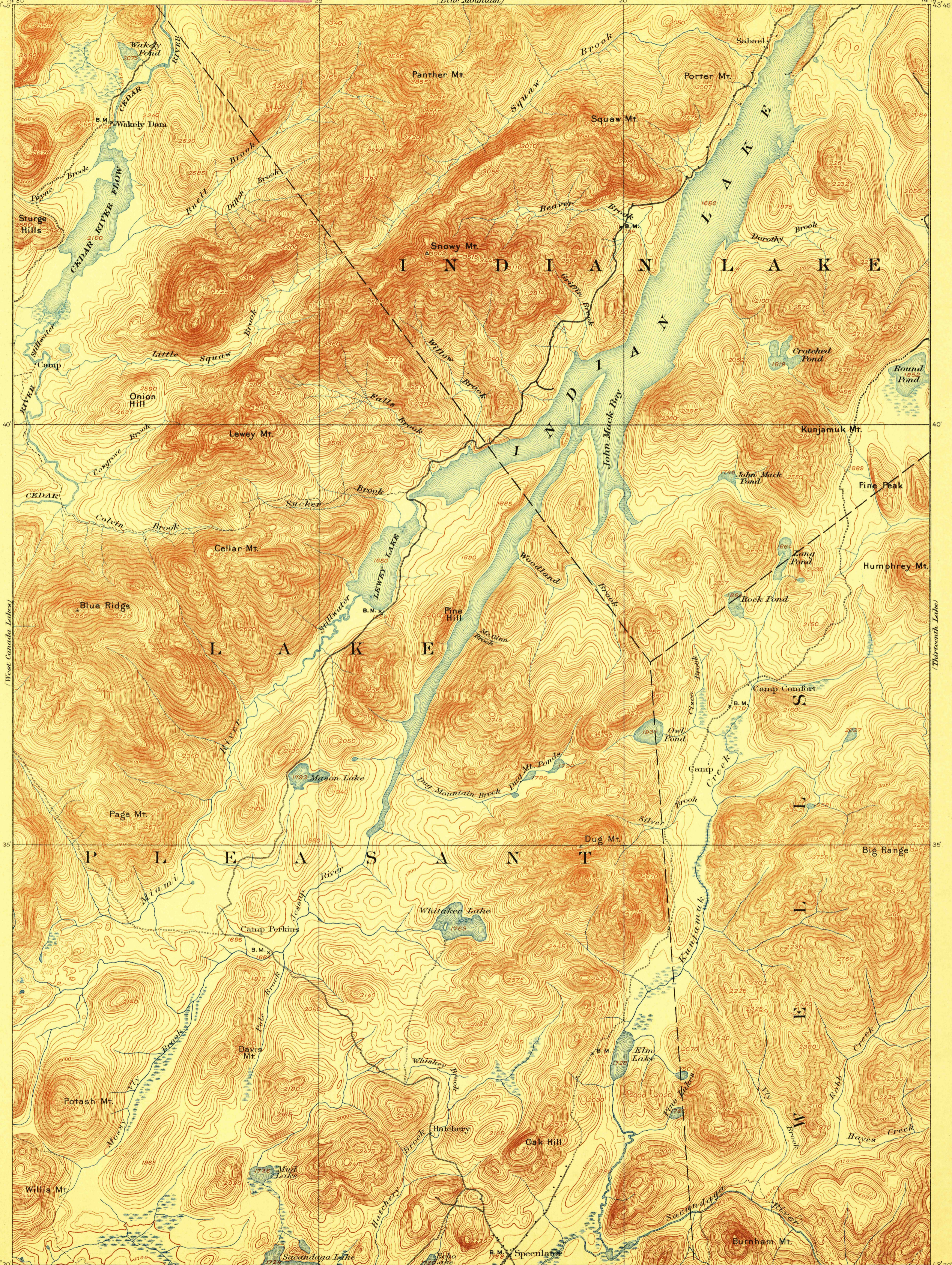


U.S.G.S.  
**FILE COPY**  
Ed. Div. Topographic Maps.

U.S.G.S.  
**FILE COPY**  
Ed. Div. Topographic Maps.



H.M. Wilson, Geographer in charge.  
Triangulation by W.J. Peters.  
Topography by W.H. Lovell.  
Surveyed in 1896-97 in cooperation with the State of New York.

Scale 62500  
Miles  
Kilometers  
Contour interval 20 feet.  
Datum is mean sea level.

Engraved Sep. 1899 by U.S.G.S.  
Edition of April 1902, reprinted Dec. 1909.

USGS  
Historical File  
Topographic Division  
INDIAN LAKE, N.Y.

FEB 10 1910 2476