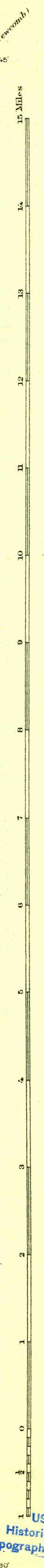
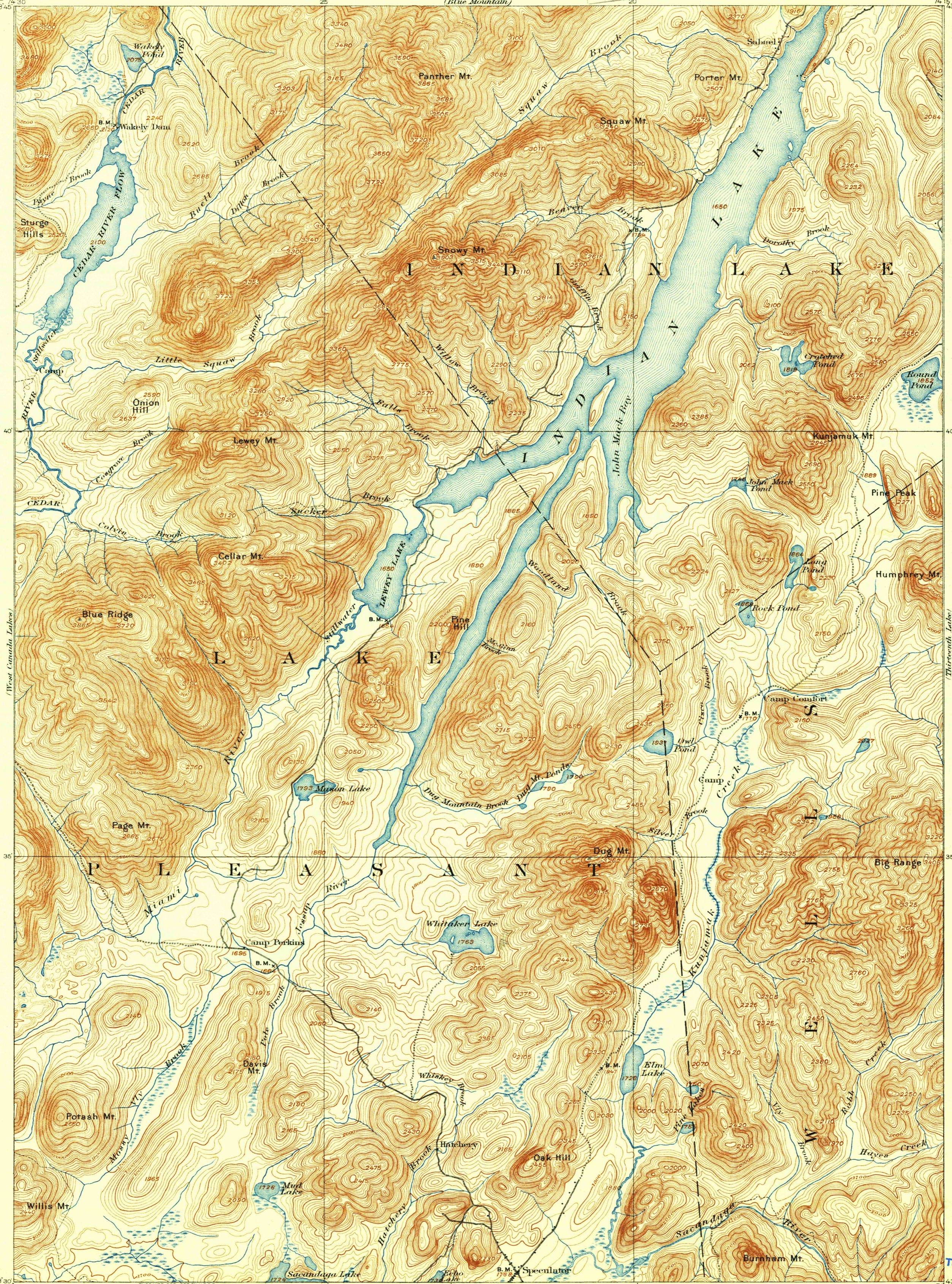
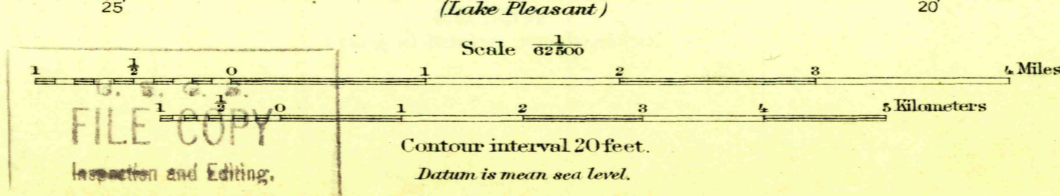


U.S.G.S.  
FILE COPY  
Inspection and Editing.



H.M. Wilson, Geographer in charge.  
Triangulation by W.J. Peters.  
Topography by W.H. Lovell.  
Surveyed in 1896-97 in cooperation with the State of New York.



USGS  
Historical File  
Topographic Division

EDITION OF APRIL 1902, REPRINTED 1930  
POLYCONIC PROJECTION, NORTH AMERICAN DATUM