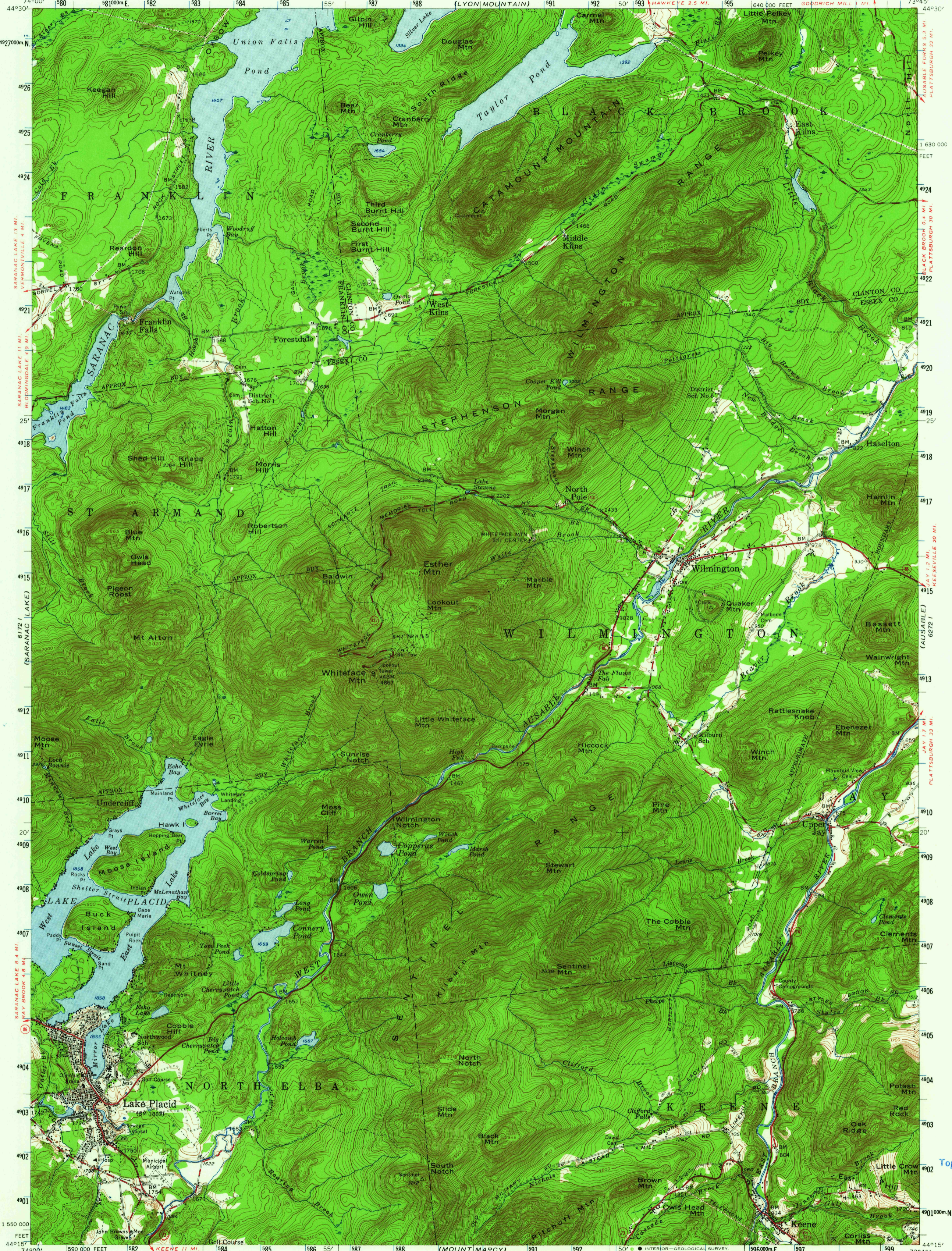
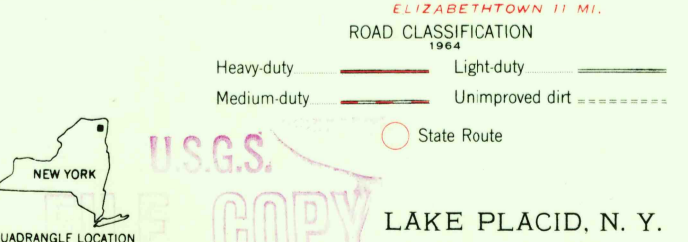
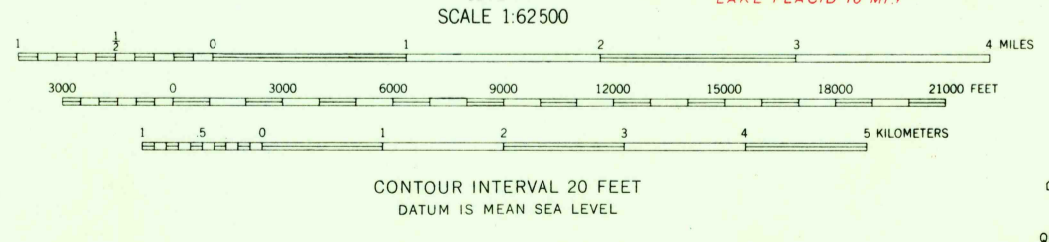


UNITED STATES
DEPARTMENT OF THE INTERIOR
GEOLOGICAL SURVEY

LAKE PLACID QUADRANGLE
NEW YORK
15 MINUTE SERIES (TOPOGRAPHIC)



Mapped, edited, and published by the Geological Survey
Control by USGS and USC&GS
Topography from aerial photographs by photogrammetric methods
Aerial photographs taken 1942, 1947 and 1952. Field check 1953
Polyconic projection. 1927 North American datum
10,000 foot grid based on New York coordinate system, east zone
Entire area lies within the Adirondack State Park
Unchecked elevations are shown in brown
1000-meter Universal Transverse Mercator grid ticks, zone 18, shown in blue.



THIS MAP COMPLIES WITH NATIONAL MAP ACCURACY STANDARDS
FOR SALE BY U.S. GEOLOGICAL SURVEY, WASHINGTON 25, D.C.
A FOLDER DESCRIBING TOPOGRAPHIC MAPS AND SYMBOLS IS AVAILABLE ON REQUEST

LAKE PLACID, N. Y.
N 4415-W 7345/15
1953
AMS 6272 IV-SERIES V721

JUL 7 1964
102 35

USGS
Historical File
Topographic Division