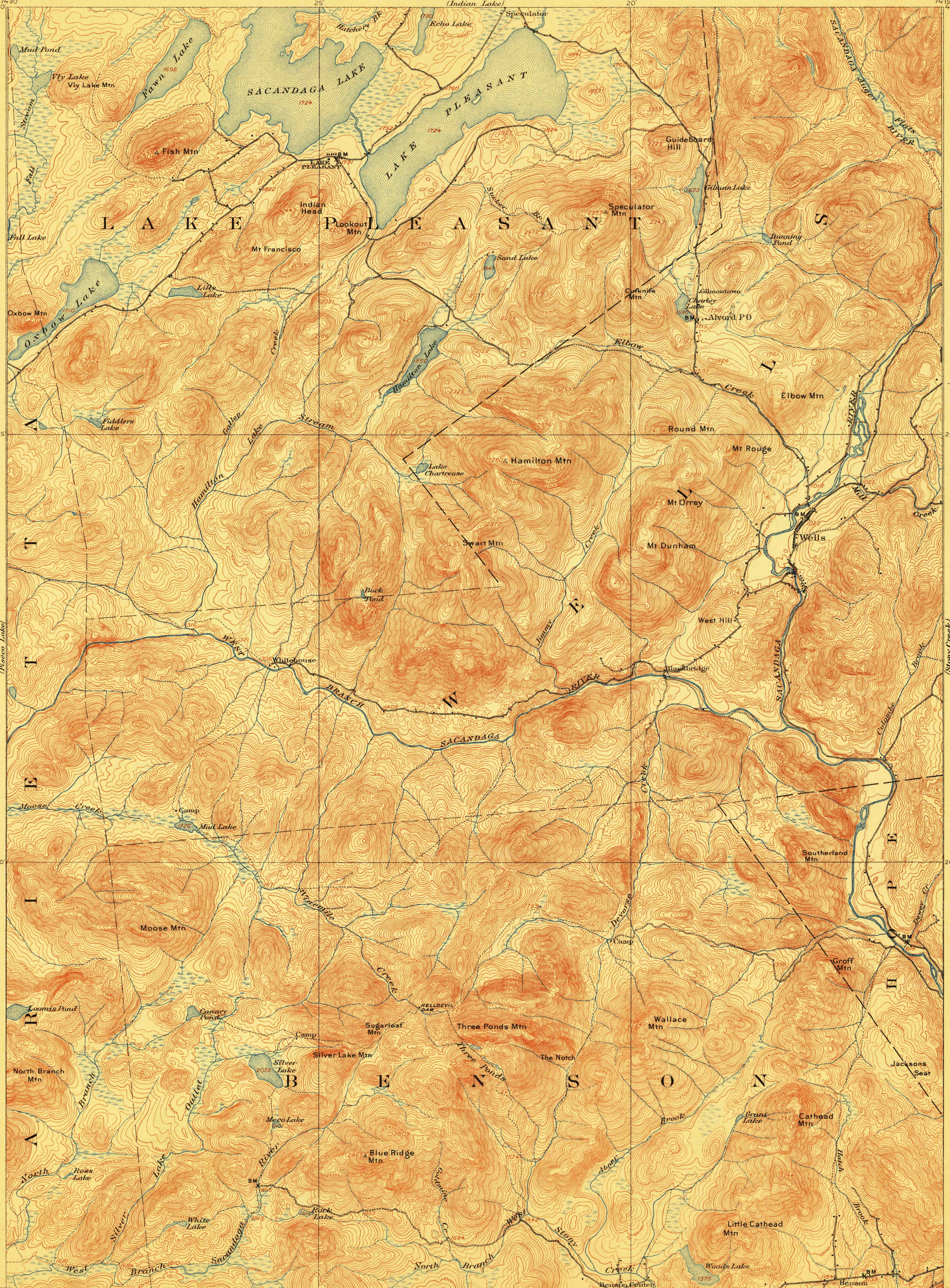


TOPOGRAPHY

U.S. GEOLOGICAL SURVEY
GEORGE OTIS SMITH
DIRECTOR

STATE OF NEW YORK
REPRESENTED BY THE
STATE ENGINEER AND SURVEYOR
(Indian Lake)

NEW YORK
(HAMILTON COUNTY)
LAKE PLEASANT QUADRANGLE

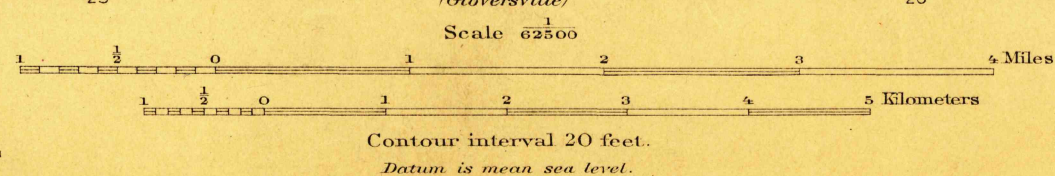
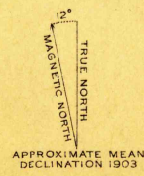


U. S. G. S.
FILE COPY
Ed. Div. Topographic Maps.

U. S. G. S.
FILE COPY
Ed. Div. Topographic Maps.

ENGRAVED JULY 1906 BY U.S.G.S.

H. M. Wilson, Geographer.
J. H. Jennings, in charge of section.
Topography by Glenn S. Smith, J. R. Eakin,
and New York State Land Survey.
Assistants, A. P. Meade, Jr., O. C. Merrill, and Fred Graff, Jr.
Control by E. L. Mc Nair and J. M. Whitman.
Surveyed in 1903-1904.



Edition of Feb. 1907, reprinted July 1911.

USGS
Historical File
Topographic Division

AUG 31 1911 3598

LAKE PLEASANT, N.Y.