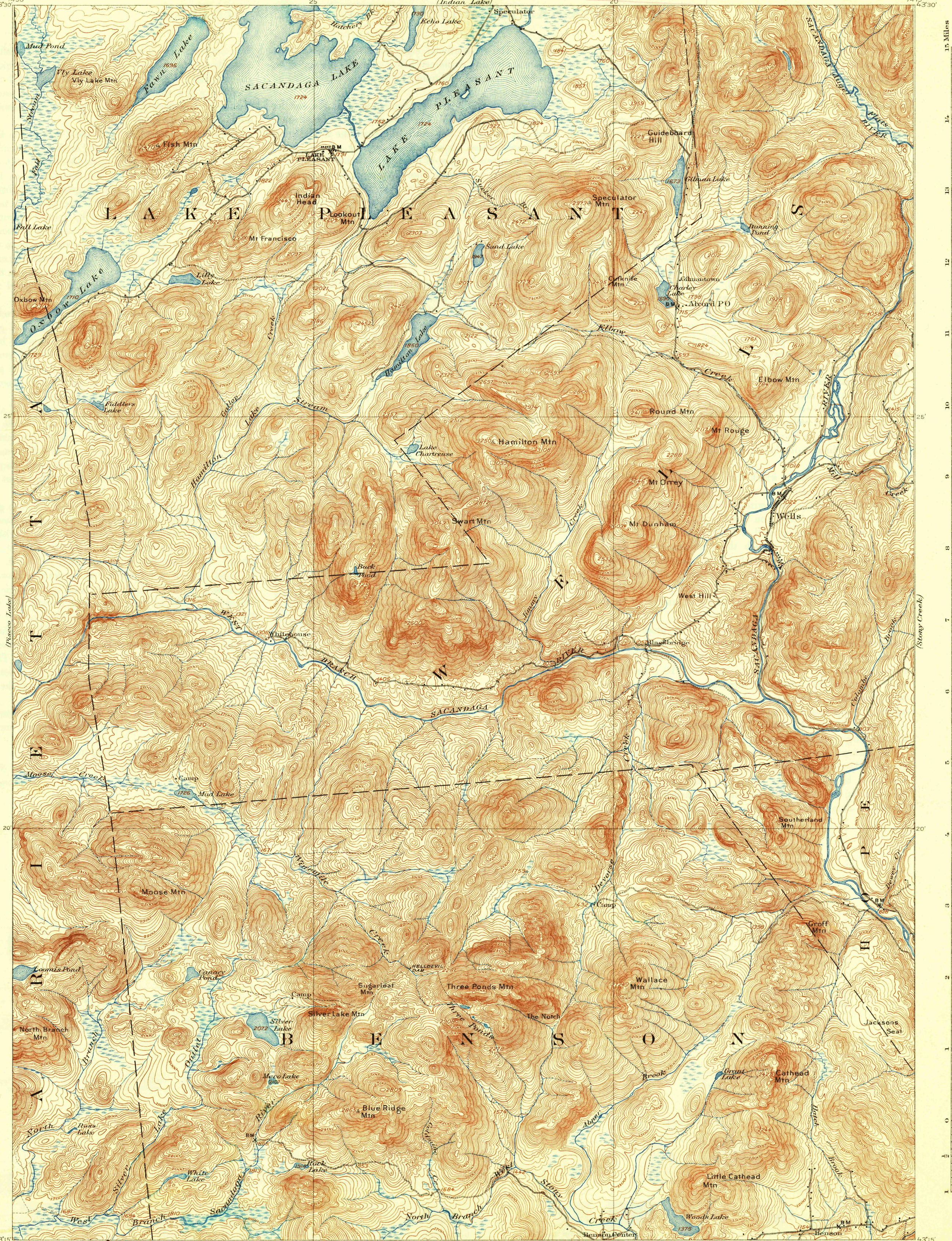


U.S.G.S  
FILE COPY  
Inspection and Editing



15 Miles  
14  
13  
12  
11  
10  
9  
8  
7  
6  
5  
4  
3  
2  
1  
0  
-1  
-2  
-3  
-4  
-5  
-6  
-7  
-8  
-9  
-10  
-11  
-12  
-13  
-14  
-15

43°30' 74°30'  
43°15' 74°15'  
H. M. Wilson, Geographer;  
J. H. Jennings, in charge of section.  
Topography by Glenn S. Smith, J. R. Eakin,  
and New York State Land Survey,  
Assistants, A. P. Meade, Jr., O. C. Merrill, and Fred Graff, Jr.  
Control by E. L. Mc Nair and J. M. Whitman.  
Surveyed in 1903-1904.

Scale 62500  
1 2 3 4 Miles  
1 2 3 4 5 Kilometers  
Contour interval 20 feet.  
Datum is mean sea level.

ENGRAVED JULY 1906 BY U.S.G.S.  
Edition of Feb. 1907, reprinted 1926.  
Polyconic projection, North American datum

USGS  
Historical File  
Topographic Division  
Inspection and Editing

LAKE PLEASANT, N.Y.  
DEC 4 - 1926 (3675)