

Mapped, edited, and published by the Geological Survey

Control by USGS and USC&GS

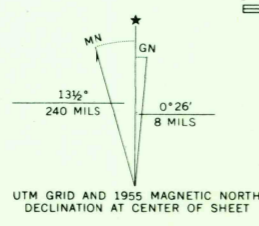
Topography from aerial photographs by photogrammetric methods. Aerial photographs taken 1953. Field check 1955

Polyconic projection, 1927 North American datum
10,000-foot grid based on New York coordinate system, east zone

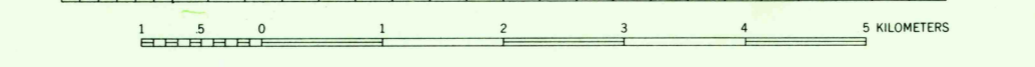
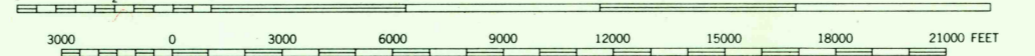
Entire area lies within the Adirondack State Park

Unchecked elevations are shown in brown

1000-meter Universal Transverse Mercator grid ticks, zone 18, shown in blue



SCALE 1:62,500



CONTOUR INTERVAL 20 FEET

DATUM IS MEAN SEA LEVEL



ROAD CLASSIFICATION

Heavy-duty ——— Light-duty ———
Medium-duty ——— Unimproved dirt ———

○ State Route

LONG LAKE, N. Y.
N4400-W7415/15

1955

AMS 6172 III—SERIES V721

USGS
Historical File
Topographic Division

JAN 28 1964

7930