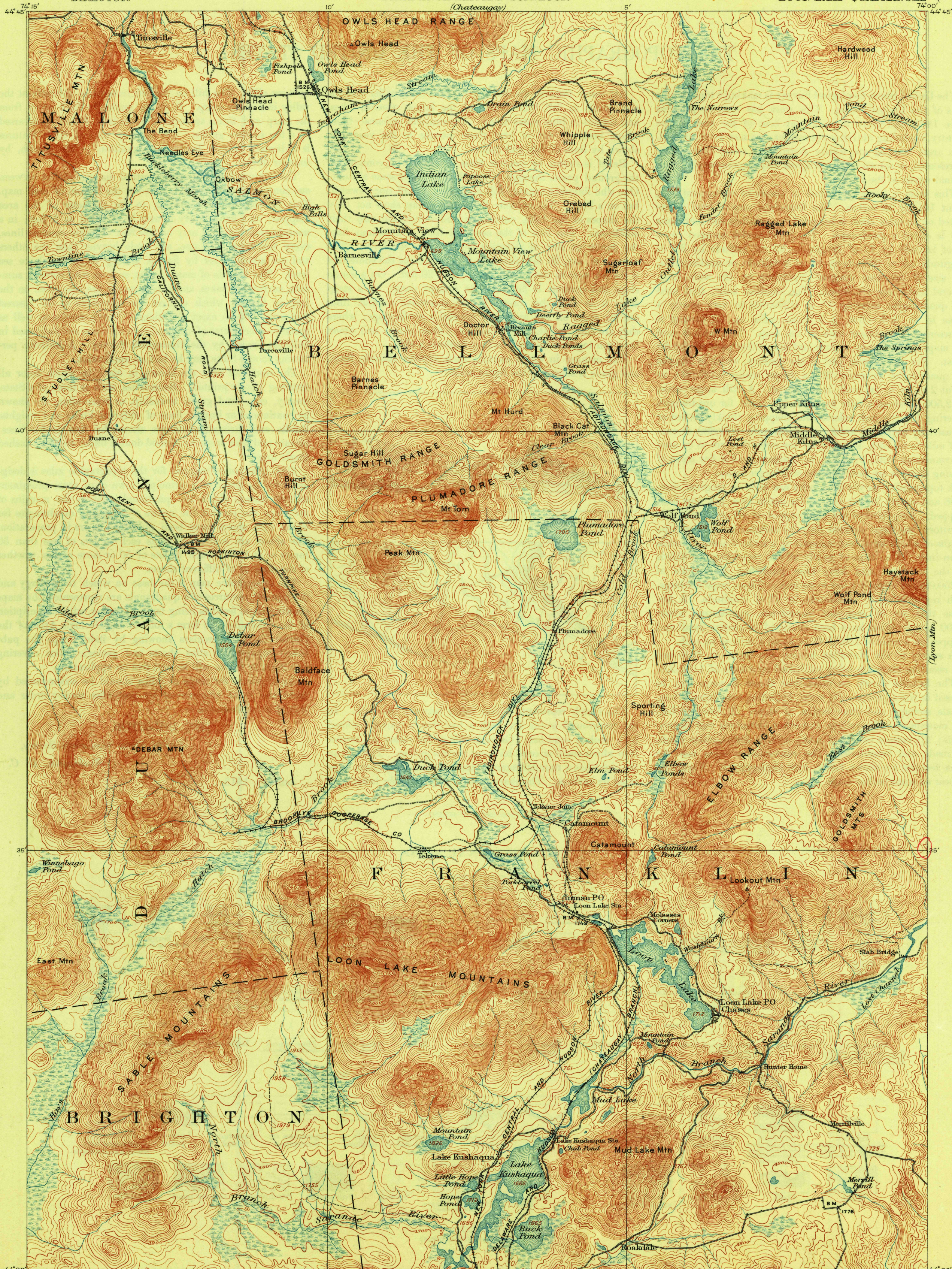


TOPOGRAPHY

U.S. GEOLOGICAL SURVEY
GEORGE OTIS SMITH
DIRECTOR

STATE OF NEW YORK
REPRESENTED BY THE
STATE ENGINEER AND SURVEYOR
(Chateauguy)

NEW YORK
(FRANKLIN COUNTY)
LOON LAKE QUADRANGLE



U.S.G.S.
FILE COPY
Ed. Div. Topographic Maps.

U.S.G.S.
FILE COPY
Ed. Div. Topographic Maps.

ENGRAVED JUNE 1908 BY U.S.G.S.
H.M. Wilson, Geographer.
J.H. Jennings, in charge of section.
Topography by Fred Graff, Jr., Gilbert Young,
A.R. Meade, Jr., L.E. Tucker, and R.L. Harrison.
Control by E.L. McNair, W.O. Tufts, and Glenn S. Smith.
Surveyed in 1902-1906.

APPROXIMATE MEAN
DECLINATION 1902.

Scale 1:62,500
1 2 3 4 Miles
1 2 3 4 Kilometers
Contour interval 20 feet.
Datum is mean sea level.

Edition of Aug. 1908, reprinted Oct. 1914

USGS
Historical File
Topographic Division

NOV 30 1914

3093

LOON LAKE, NY.