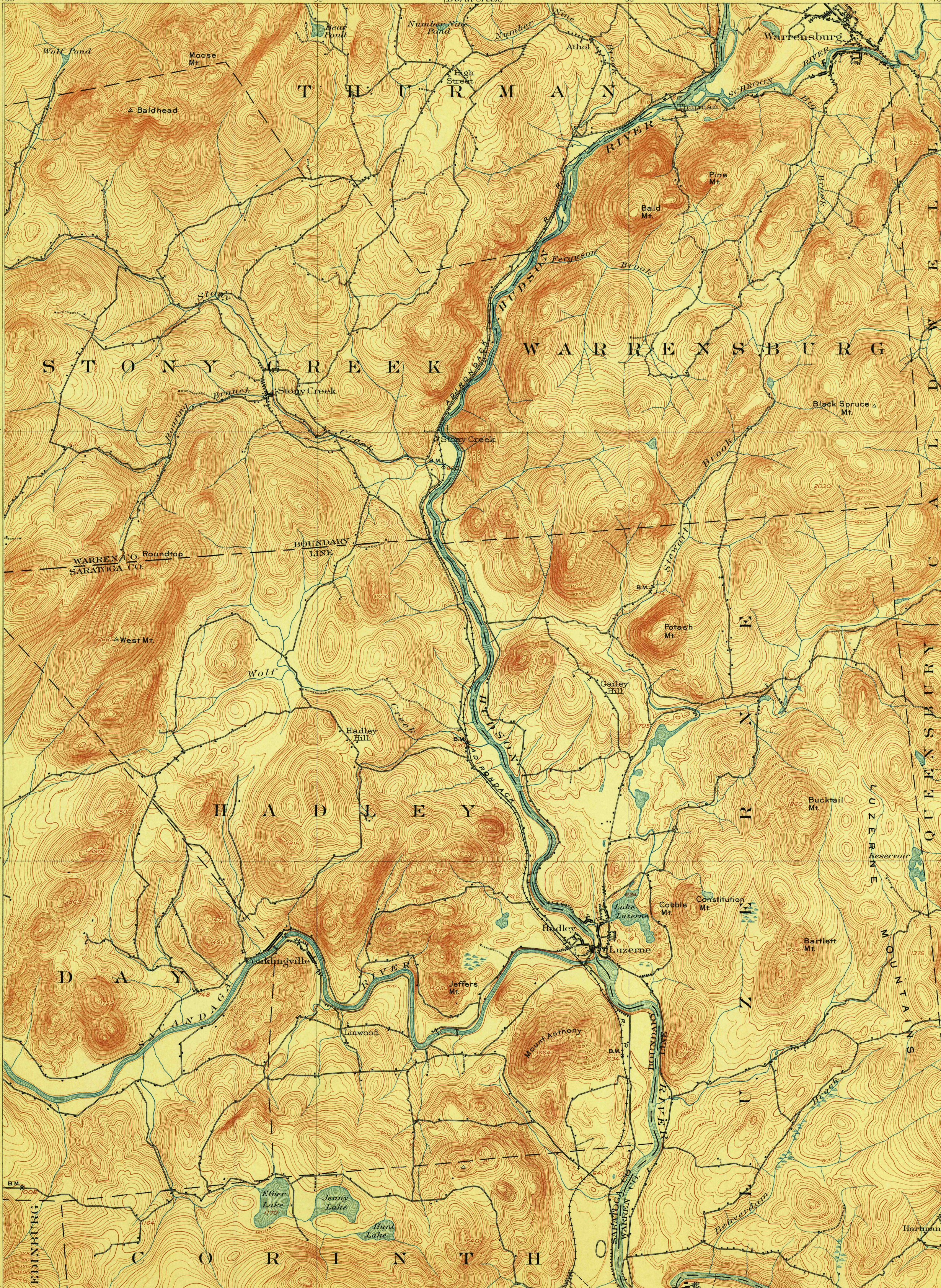


# TOPOGRAPHY

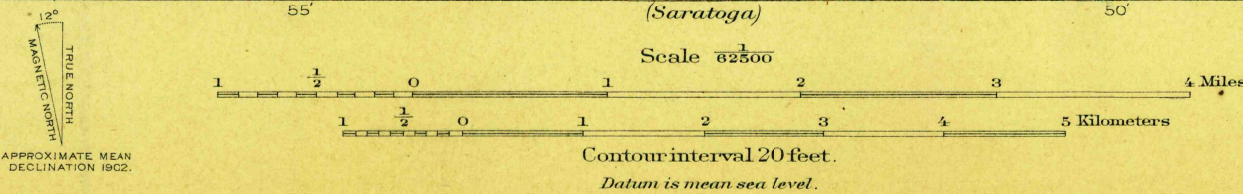
STATE OF NEW YORK  
REPRESENTED BY THE  
STATE ENGINEER AND SURVEYOR  
(North Creek)

NEW YORK  
LUZERNE QUADRANGLE

U. S. GEOLOGICAL SURVEY  
CHARLES D. WALCOTT, DIRECTOR



H. M. Wilson, Geographer in charge.  
Control by U. S. C. & G. Survey and W. T. Griswold.  
Topography by W. H. Lovell.  
Surveyed in 1900 in cooperation with the State of New York.



Edition of June 1903, reprinted Jan. 1907.

APR 10 1907 2129

U. S. G. S.  
FILE COPY  
Ed. Div. Topographic Maps  
USGS  
Historical File  
Topographic Division

LUZERNE, NY.