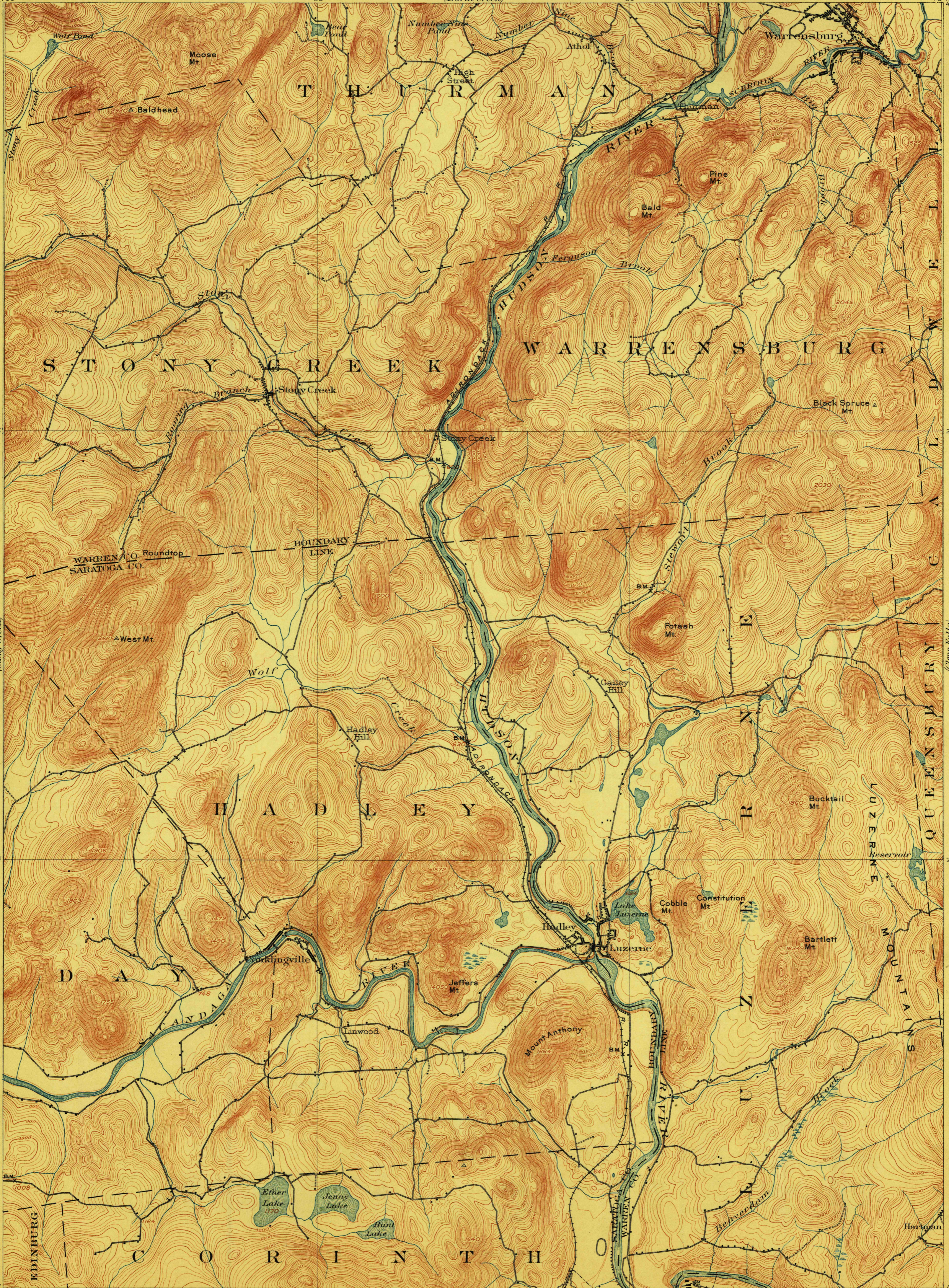


TOPOGRAPHY

U.S. GEOLOGICAL SURVEY
GEORGE OTIS SMITH, DIRECTOR

STATE OF NEW YORK
REPRESENTED BY THE
STATE ENGINEER AND SURVEYOR
(North Creek)

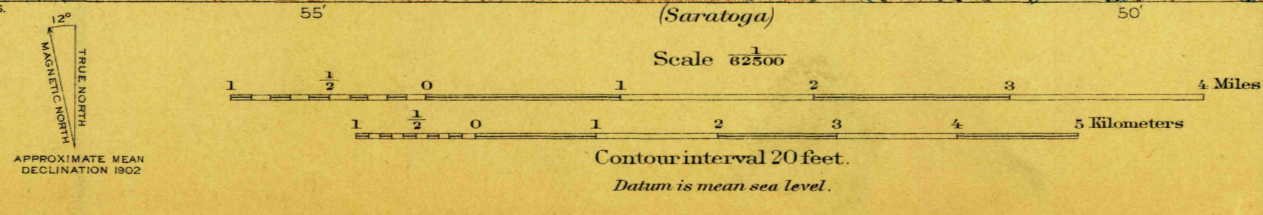
NEW YORK
LUZERNE QUADRANGLE



U.S.G.S.
FILE COPY
Ed. Div. Topographic Maps.

U.S.G.S.
FILE COPY
Ed. Div. Topographic Maps.

H.M. Wilson, Geographer in charge.
Control by U.S.C. & G. Survey and W.T. Griswold.
Topography by W.H. Lovell.
Surveyed in 1900 in cooperation with the State of New York.



Edition of June 1903, reprinted Apr. 1911.

USGS
Historical File
Topographic Division

MAY 20 1911 3469

LUZERNE, N.Y.