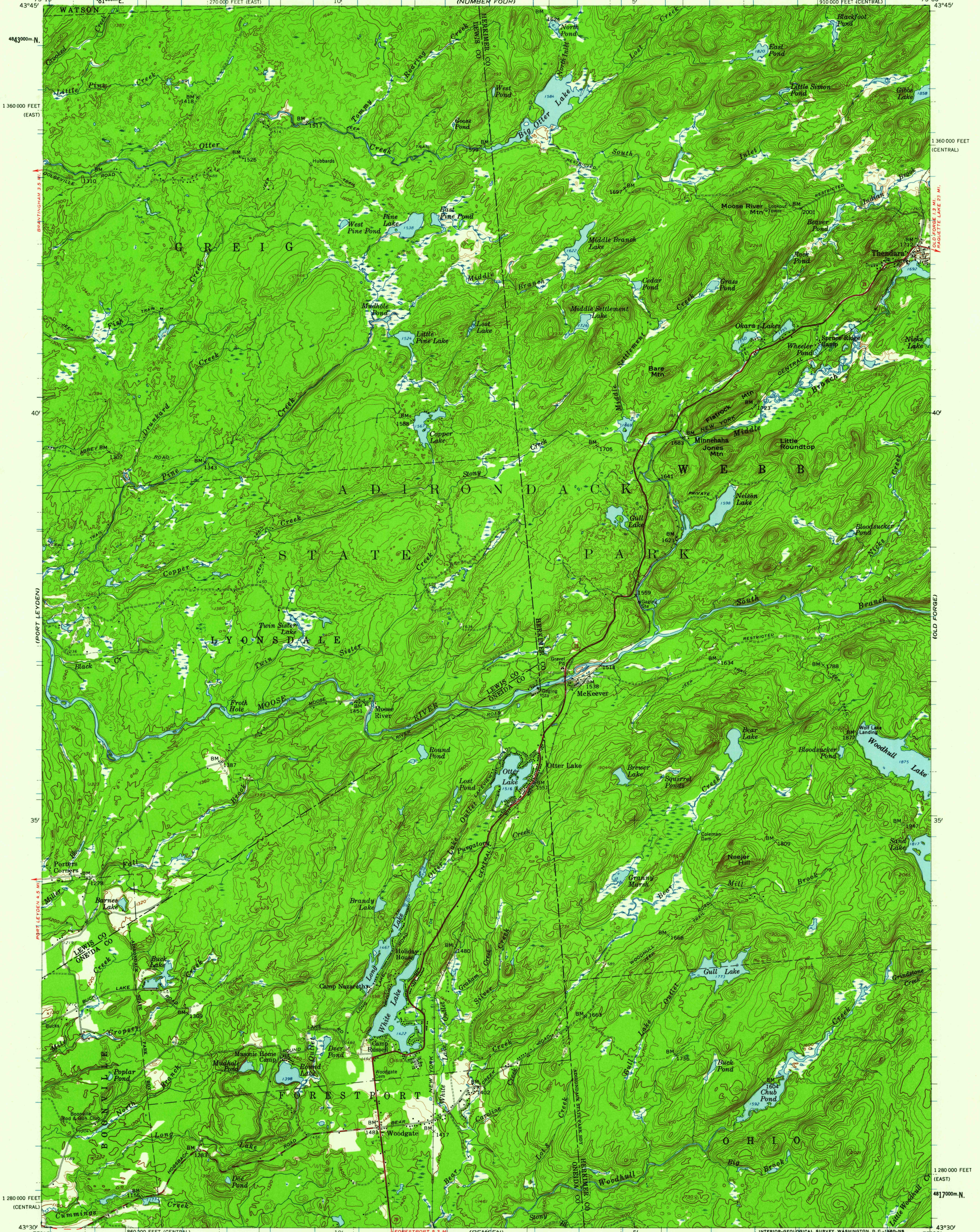
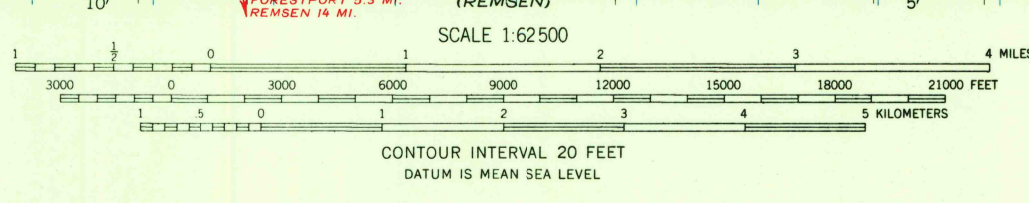


75°15' 43°45' 1360000 FEET (EAST) 10' (NUMBER FOUR) 5' 910000 FEET (CENTRAL) 75°00' 43°45' 1360000 FEET (CENTRAL)



Mapped, edited, and published by the Geological Survey
Control by USGS and USC&GS
Topography from aerial photographs by photogrammetric methods
Aerial photographs taken 1955. Field check 1958
Polyconic projection. 1927 North American datum
10,000-foot grids based on New York coordinate system,
central and east zones
1000-meter Universal Transverse Mercator grid ticks
zone 18, shown in blue
Unchecked elevations are shown in brown



ROAD CLASSIFICATION
Heavy-duty ——— Light-duty ———
Medium-duty - - - - - Unimproved dirt - - - - -
○ State Route



USGS
Historical File
Topographic Division
MC KEEVER, N. Y.
N4330-W7500/15

THIS MAP COMPLIES WITH NATIONAL MAP ACCURACY STANDARDS
FOR SALE BY U. S. GEOLOGICAL SURVEY, WASHINGTON 25, D. C.
A FOLDER DESCRIBING TOPOGRAPHIC MAPS AND SYMBOLS IS AVAILABLE ON REQUEST

1958

JUN 16 1960

5615

U.S.G.S.
FILE COPY
TOPOGRAPHIC DIVISION