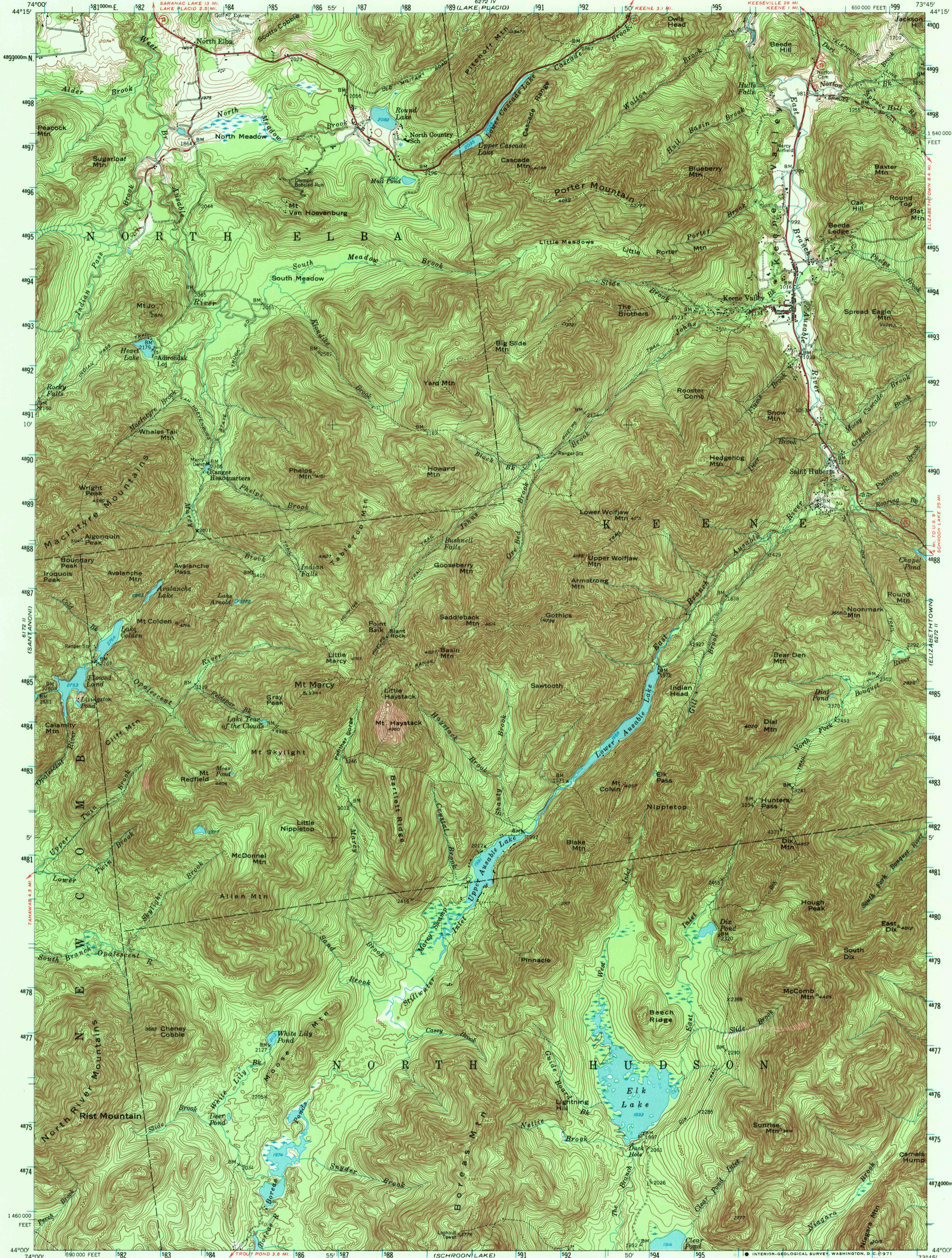
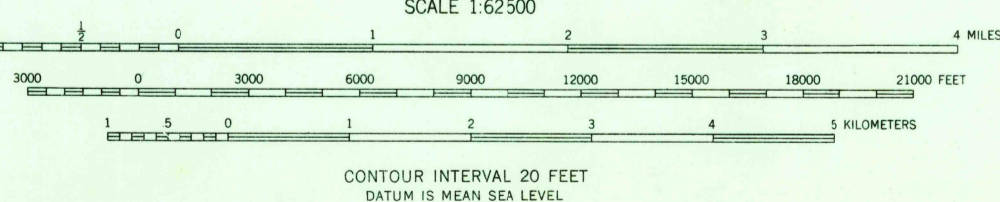
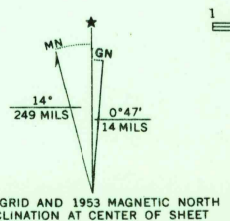


UNITED STATES
DEPARTMENT OF THE INTERIOR
GEOLOGICAL SURVEY

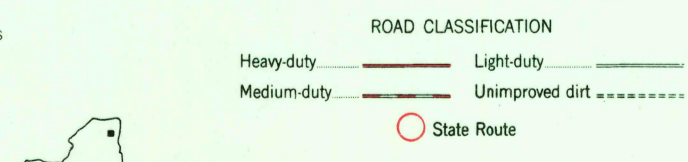
MOUNT MARCY QUADRANGLE
NEW YORK—ESSEX CO.
15 MINUTE SERIES (TOPOGRAPHIC)



Mapped, edited, and published by the Geological Survey
Control by USGS and USC&GS
Topography from aerial photographs by photogrammetric methods. Aerial photographs taken 1942, 1947, and 1952
Field check 1953
Polyconic projection. 1927 North American datum
10,000-foot grid based on New York coordinate system, east zone
Entire area lies within Adirondack State Park
Unchecked elevations are shown in brown
1000-meter Universal Transverse Mercator grid ticks, zone 18, shown in blue



CONTOUR INTERVAL 20 FEET
DATUM IS MEAN SEA LEVEL



USGS
HISTORICAL FILE
TOPOGRAPHIC DIVISION

MOUNT MARCY, N. Y.
N4400-W7345/15
1953
AMS 6272 III—SERIES V721

32800
SEP 16 1971

THIS MAP COMPLIES WITH NATIONAL MAP ACCURACY STANDARDS
FOR SALE BY U. S. GEOLOGICAL SURVEY, WASHINGTON, D. C. 20242
A FOLDER DESCRIBING TOPOGRAPHIC MAPS AND SYMBOLS IS AVAILABLE ON REQUEST