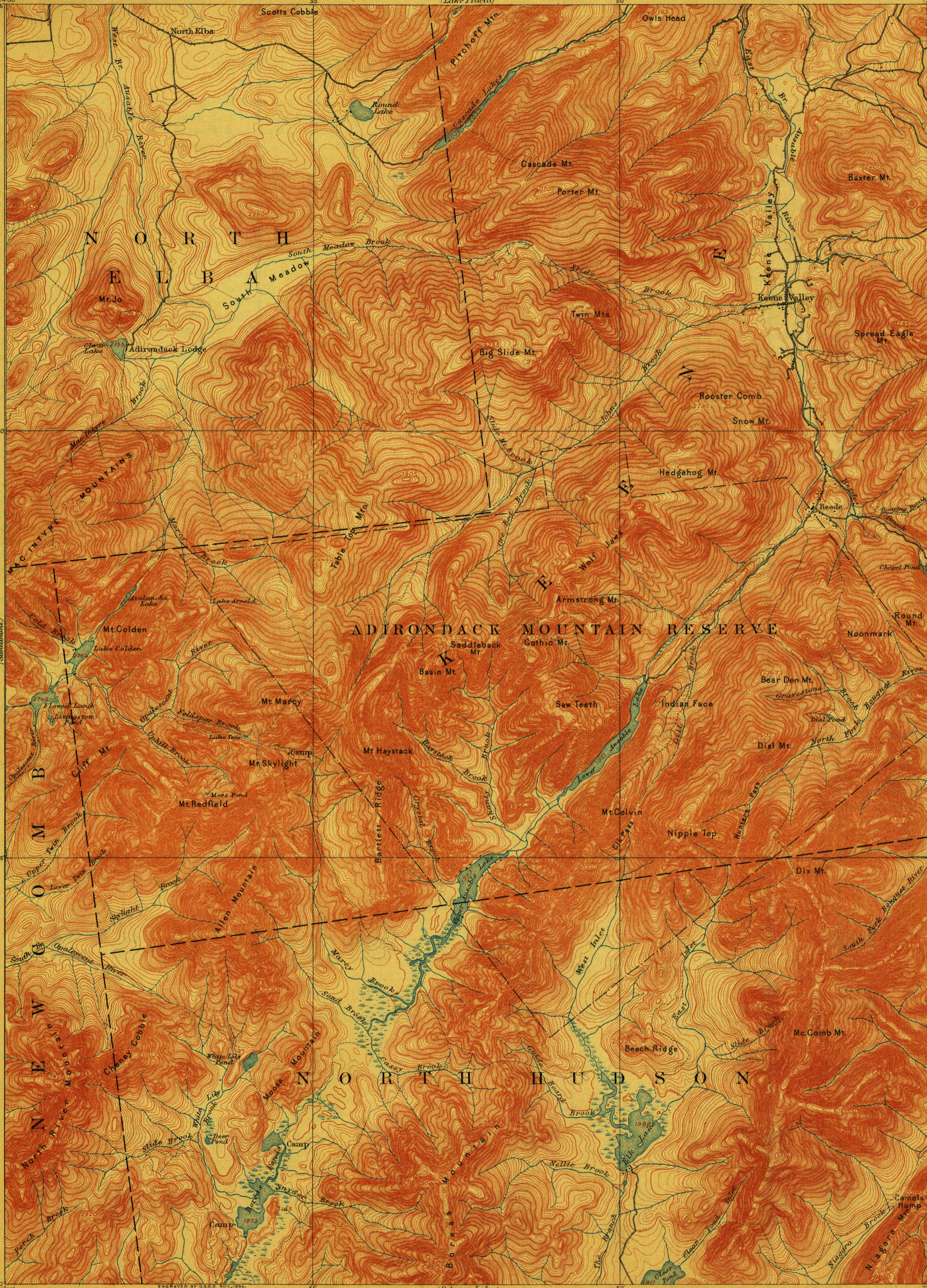


TOPOGRAPHY

U.S. GEOLOGICAL SURVEY  
GEORGE OTIS SMITH  
DIRECTOR

STATE OF NEW YORK  
REPRESENTED BY THE  
STATE ENGINEER AND SURVEYOR  
(Lake Placid)

NEW YORK  
(ESSEX COUNTY)  
MT. MARCY QUADRANGLE



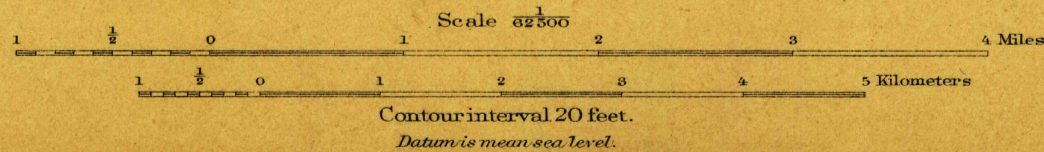
U. S. G. S.  
FILE COPY  
Ed. Div. Topographic Maps.

U. S. G. S.  
FILE COPY  
Ed. Div. Topographic Maps.

U. S. G. S.  
FILE COPY  
Ed. Div. Topographic Maps.

Henry Gannett, Chief Topographer.  
H. M. Wilson, Geographer in Charge.  
Triangulation by U.S. Coast and Geodetic Survey.  
Topography by E. C. Barnard and J. H. Jennings.  
Surveyed in 1891-92 in cooperation with the  
State of New York.

APPROXIMATE MEAN  
DECLINATION 1861.



Edition of June 1902, reprinted Oct. 1912.

USGS  
Historical File  
Topographic Division

FEB 10 1918 5004

MT. MARCY, N.Y.