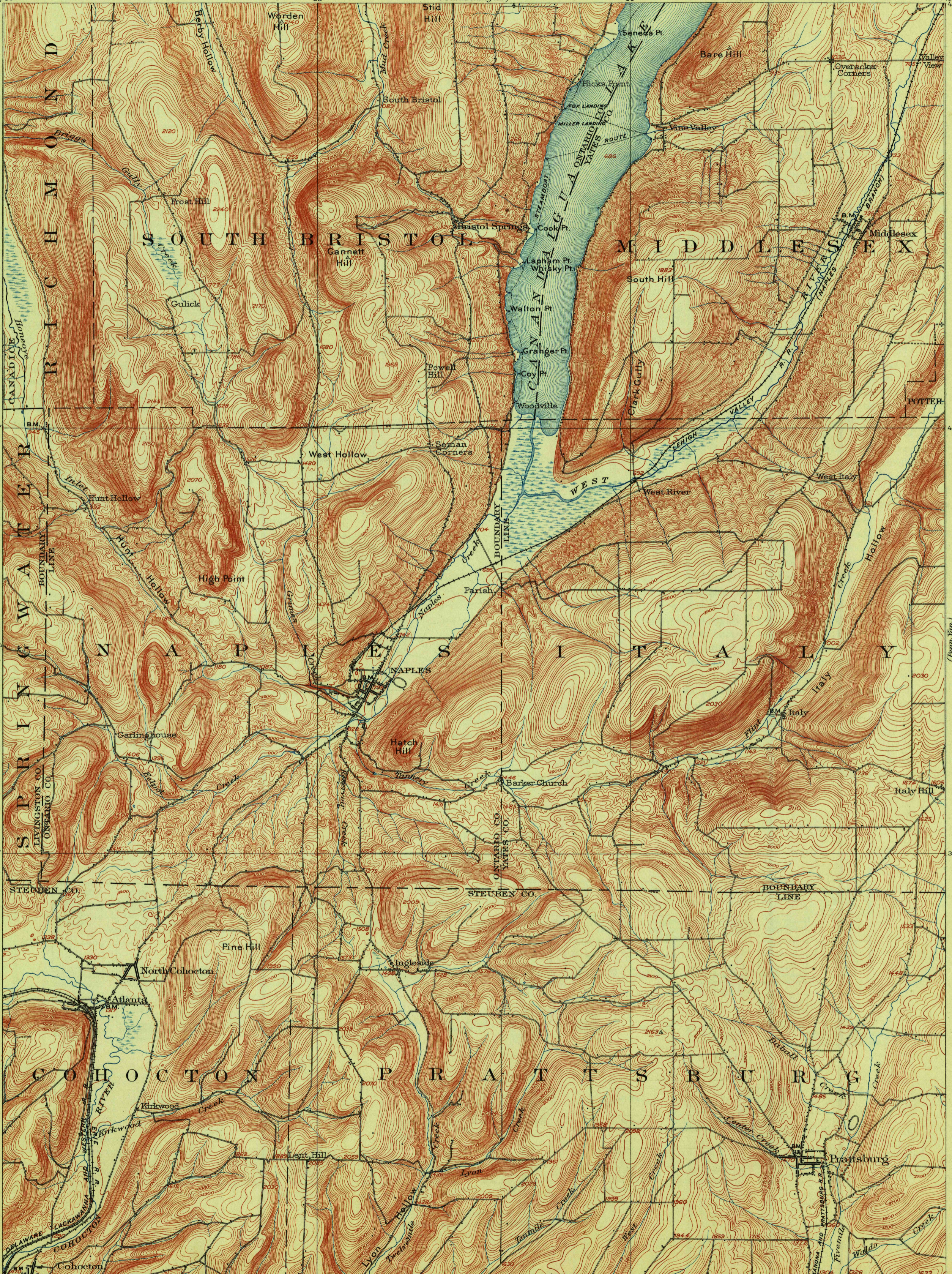


TOPOGRAPHY

STATE OF NEW YORK
REPRESENTED BY THE
STATE ENGINEER AND SURVEYOR
(Canandaigua)

NEW YORK
NAPLES QUADRANGLE

U.S. GEOLOGICAL SURVEY
GEORGE OTIS SMITH, DIRECTOR



U.S. G. S.
FILE COPY
Ed. Div. Topographic Maps.

U.S. G. S.
FILE COPY
Ed. Div. Topographic Maps.

H.M. Wilson, Geographer in charge.
Control by W.T. Griswold and W.W. Gilbert.
Topography by J.H. Jennings.
Surveyed in 1900 in cooperation with the State of New York.



USGS
Historical File
Topographic Division

Edition of April 1903, reprinted June 1913.

JUL 31 1913 2563

NAPLES, N.Y.