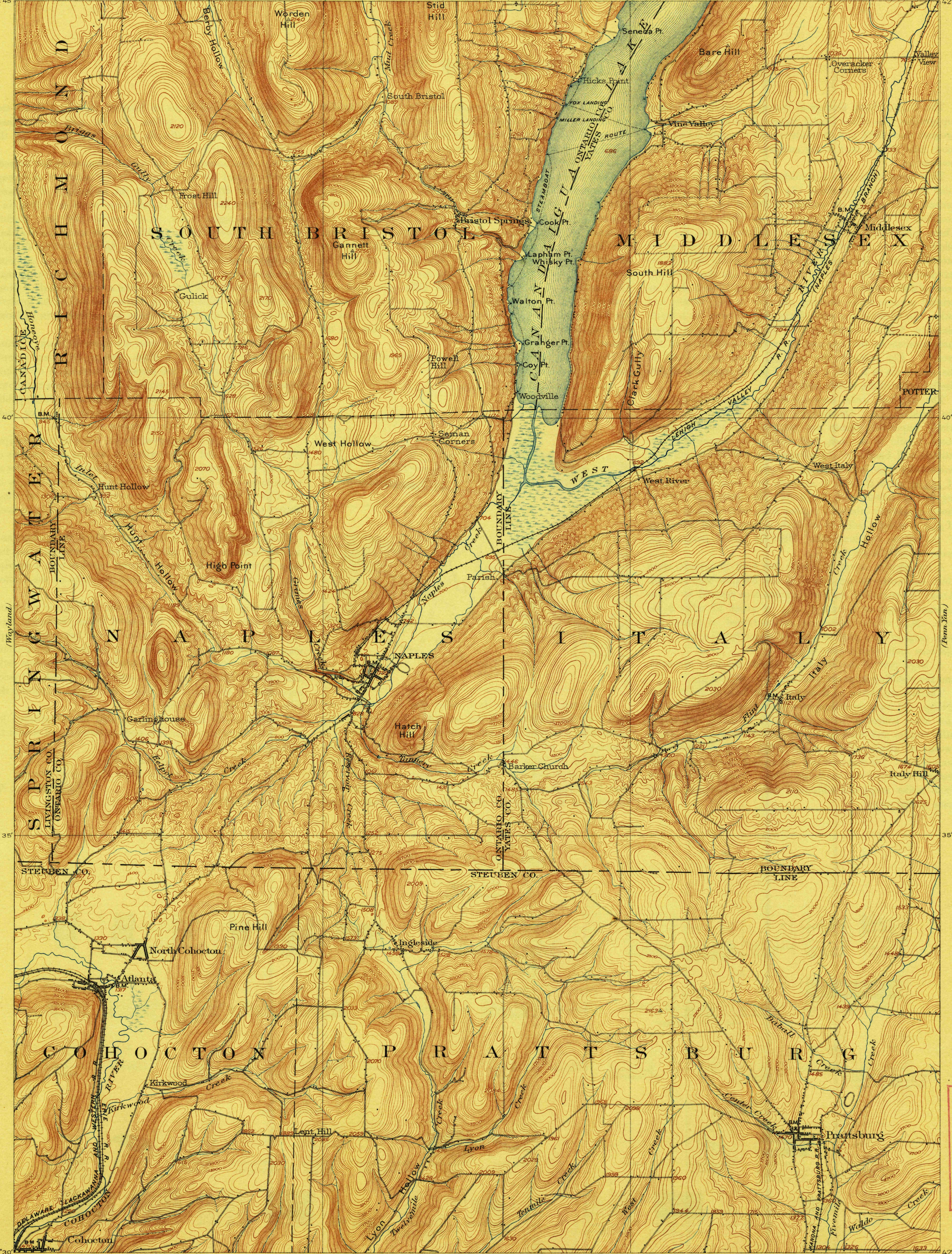


(Homer) 77°30'  
42°45'

77°15' (Photo)  
42°45'



U. S. G. S.  
FILE COPY  
Inspection and Editing.

U. S. G. S.  
FILE COPY  
Inspection and Editing.

ENGRAVED DEC. 1902 BY U.S.G.S.  
H.M. Wilson, Geographer in charge.  
Control by W.T. Griswold and W.W. Gilbert.  
Topography by J.H. Jennings.  
Surveyed in 1900 in cooperation with the State of New York.

Scale 62500  
Miles  
Kilometers  
Contour interval 20 feet.  
Datum is mean sea level.

Edition of April 1903, reprinted 1922.

JAN 15 1923 3075  
NAPLES, N.Y.