

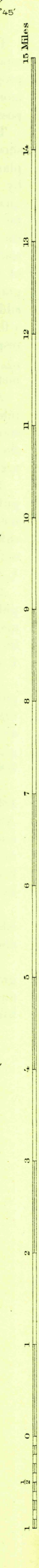
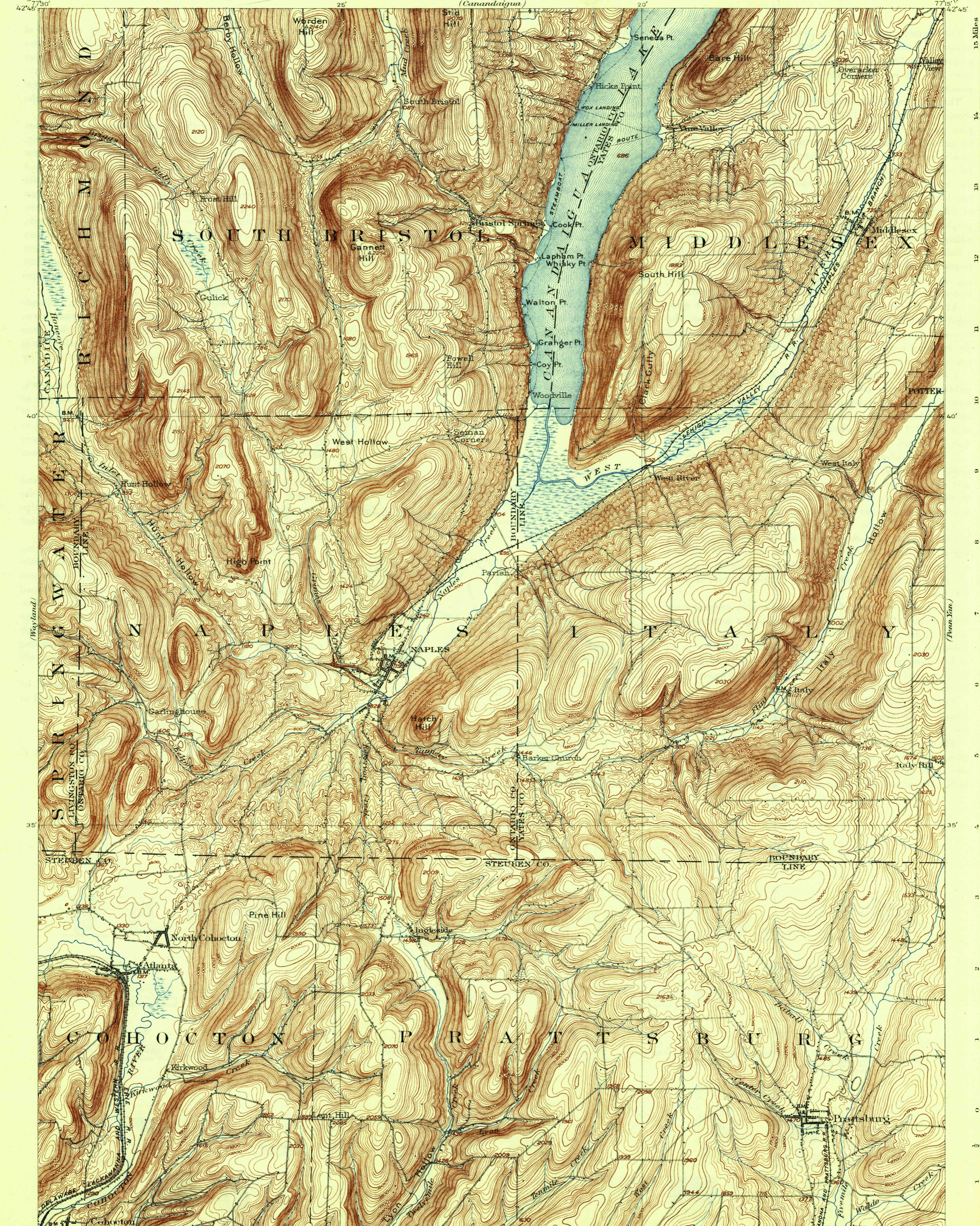
U.S.G.S. FILE COPY

DEPARTMENT OF THE INTERIOR
U.S. GEOLOGICAL SURVEY

STATE OF NEW YORK
REPRESENTED BY THE
DEPARTMENT OF PUBLIC WORKS
(Canandaigua)

NEW YORK
NAPLES QUADRANGLE

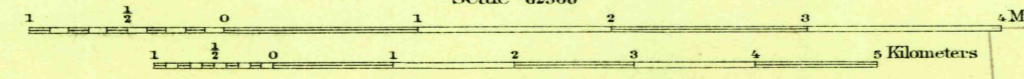
(Phillips)



42°30' 77°15' (Homell)

H.M. Wilson, Geographer in charge.
Control by W.T. Griswold and W.W. Gilbert.
Topography by J.H. Jennings.
Surveyed in 1900 in cooperation with the State of New York.

APPROXIMATE MEAN DECLINATION 1862



Scale 62500
Contour interval 20 feet.
Datum is mean sea level.

U.S.G.S. Historical File Topographic Division

ENGRAVED DEC. 1902 BY U.S.G.S.
Edition of April 1903, reprinted 1930.
Polyconic projection, North American datum

NAPLES, N.Y.

SEP 29 1930 (2520) 2520