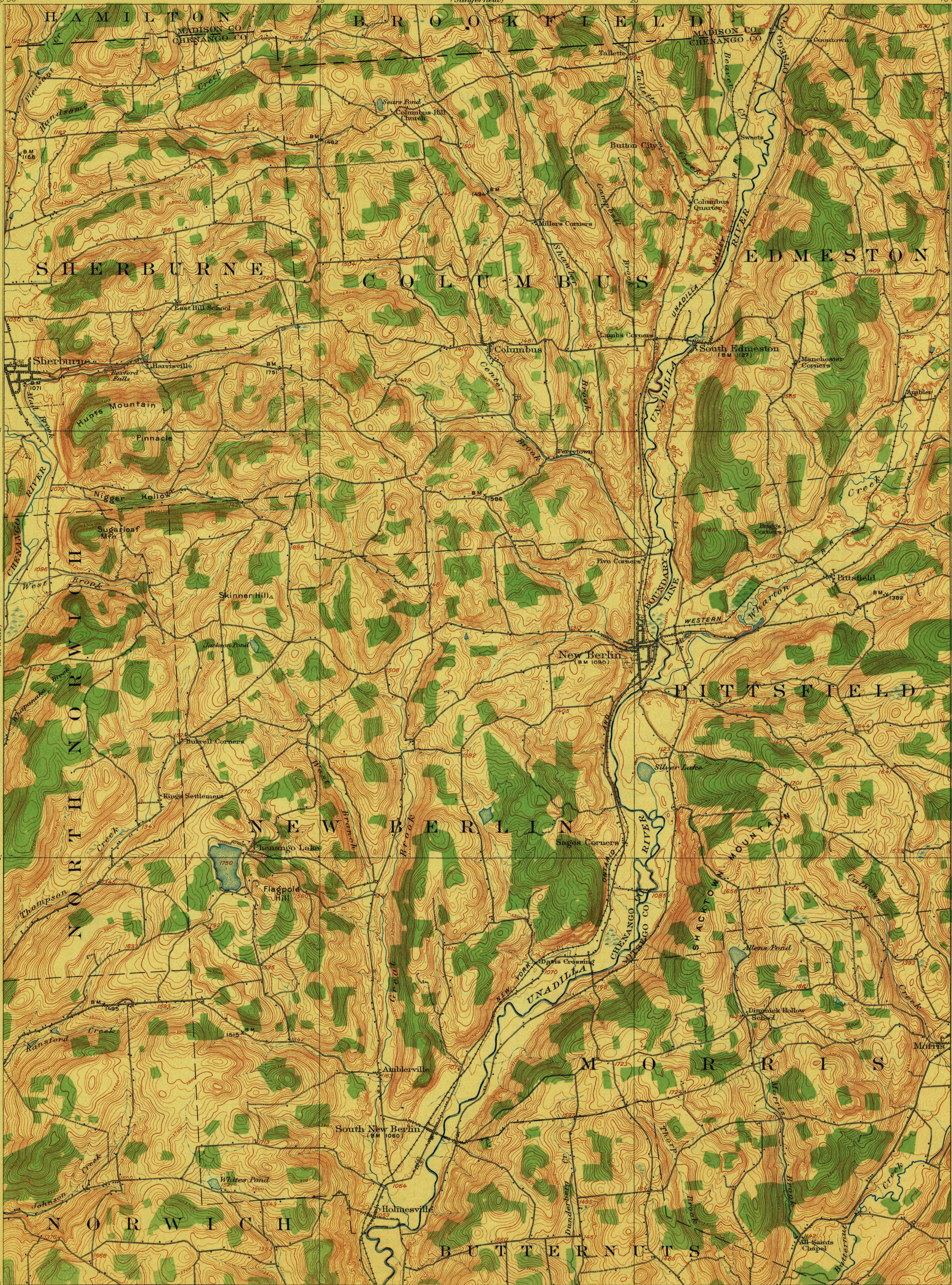


TOPOGRAPHY

STATE OF NEW YORK
FRANK M. WILLIAMS
STATE ENGINEER AND SURVEYOR
(Sangerfield)

NEW YORK
NEW BERLIN QUADRANGLE

U.S. GEOLOGICAL SURVEY
GEORGE OTIS SMITH, DIRECTOR



U. S. G. S.
FILE COPY
Ed. Div. Topographic Maps.

U. S. G. S.
FILE COPY
Ed. Div. Topographic Maps.

USGS
Historical File
Topographic Division

R. B. Marshall, Chief Geographer.
Frank Sutton, Geographer in charge.
Topography by Chas. E. Cooke.
Control by W. T. Griswold, D. H. Baldwin,
F. M. White, and James Rayburn.
Surveyed in 1910.

Scale 62500
4 Miles
5 Kilometers
Contour interval 20 feet.
Datum is mean sea level.

Edition of June 1912.
JUN. 29. 1912 3604
NEW BERLIN, N.Y.

SURVEYED IN COOPERATION WITH THE STATE OF NEW YORK.

APPROXIMATE MEAN DECLINATION 1910.