

(Long Lake)
(Blue Mountain)
(Indian Lake)

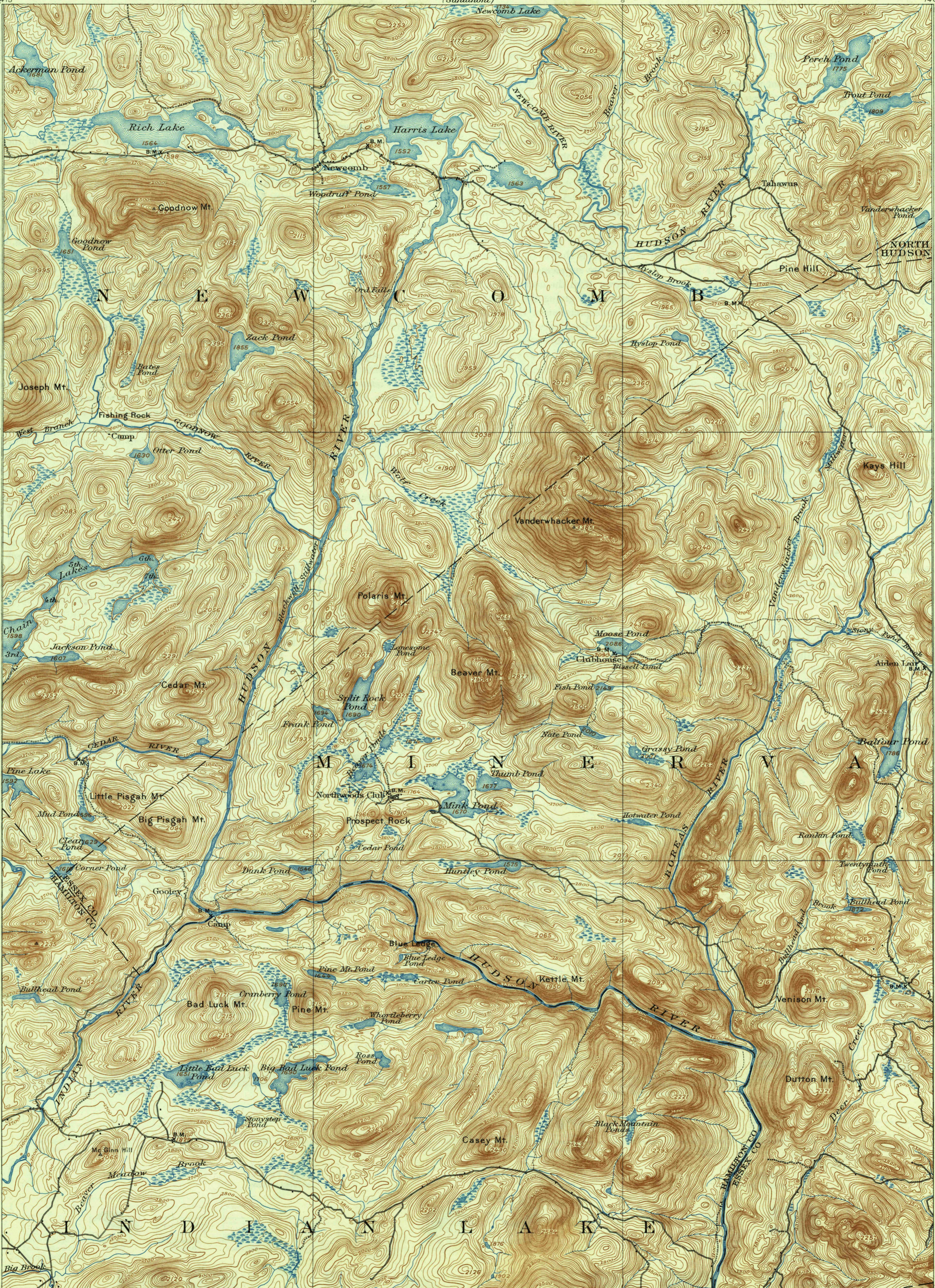
UNITED STATES
DEPARTMENT OF THE INTERIOR
GEOLOGICAL SURVEY

STATE OF NEW YORK
REPRESENTED BY THE
DEPARTMENT OF PUBLIC WORKS
(Santanoni)

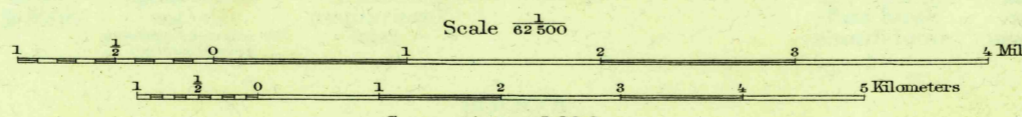
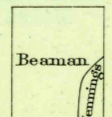
U. S. G. S.
FILE COPY
Inspection and Editing.

NEW YORK
NEWCOMB QUADRANGLE

(Mt. Marcy)
15 Miles
14
13
12
11
10
9
8
7
6
5
4
3
2
1
0
1
2
3
4
5
6
7
8
9
10
11
12
13
14
15 Miles
(Satanoni Lakes)
(North Creek)



H.M. Wilson, Geographer in charge.
Triangulation by W.J. Peters.
Topography by W.M. Beaman and J.H. Jennings.
Surveyed in 1896 in cooperation with the
State of New York.



Contour interval 20 feet.
Datum is mean sea level.

USGS
Historical File
Topographic Division

Edition of Oct. 1901, reprinted 1938
Polyconic projection, North American datum

NEWCOMB, N.Y.

U. S. G. S.
FILE COPY
Inspection and Editing.

3925