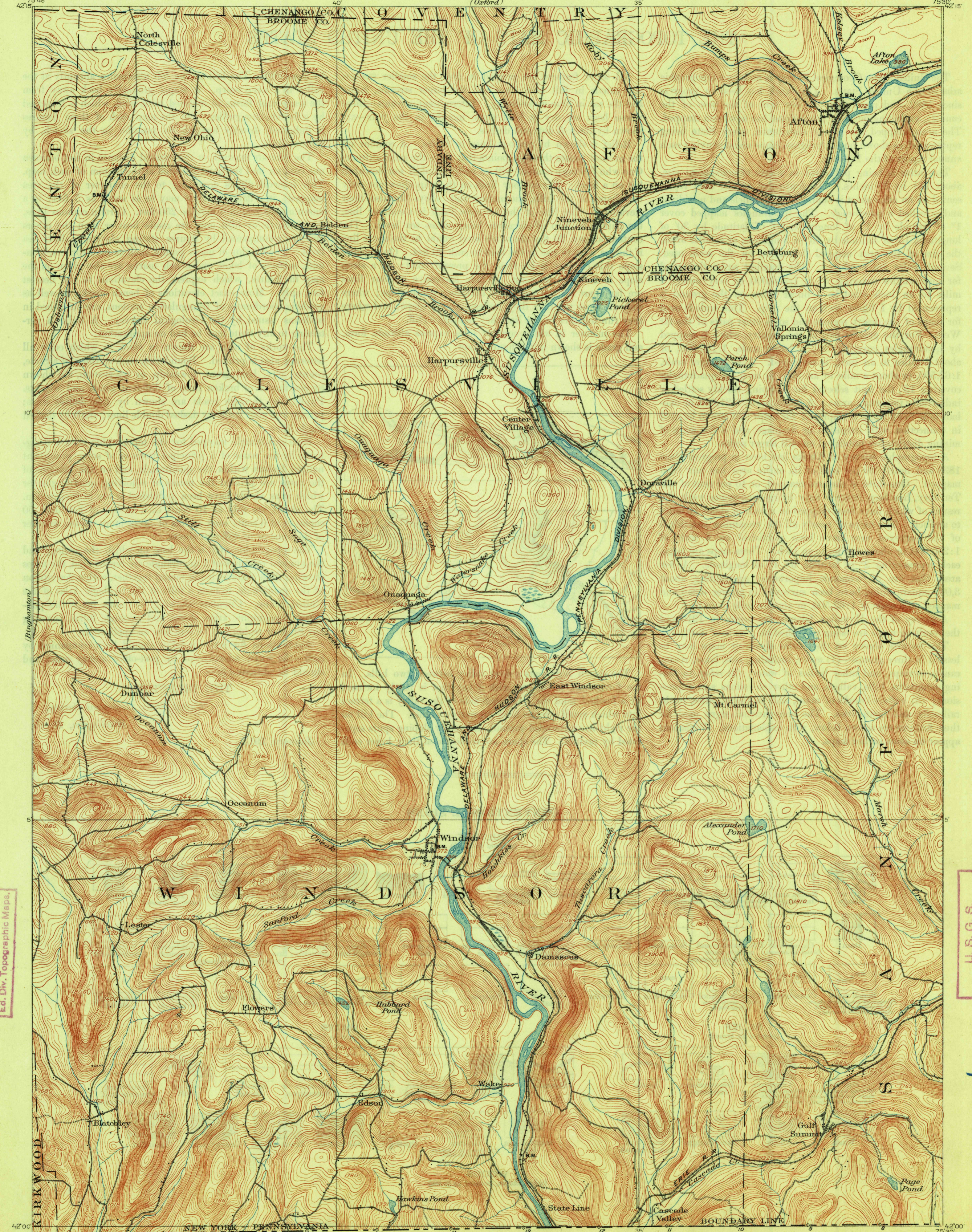


TOPOGRAPHY

STATE OF NEW YORK
REPRESENTED BY THE
STATE ENGINEER AND SURVEYOR
(Oxford)

NEW YORK
NINEVEH QUADRANGLE

U.S. GEOLOGICAL SURVEY
GEORGE OTIS SMITH, DIRECTOR



U. S. G. S.
FILE COPY
Ed. Div. Topographic Maps.

U. S. G. S.
FILE COPY
Ed. Div. Topographic Maps.

1