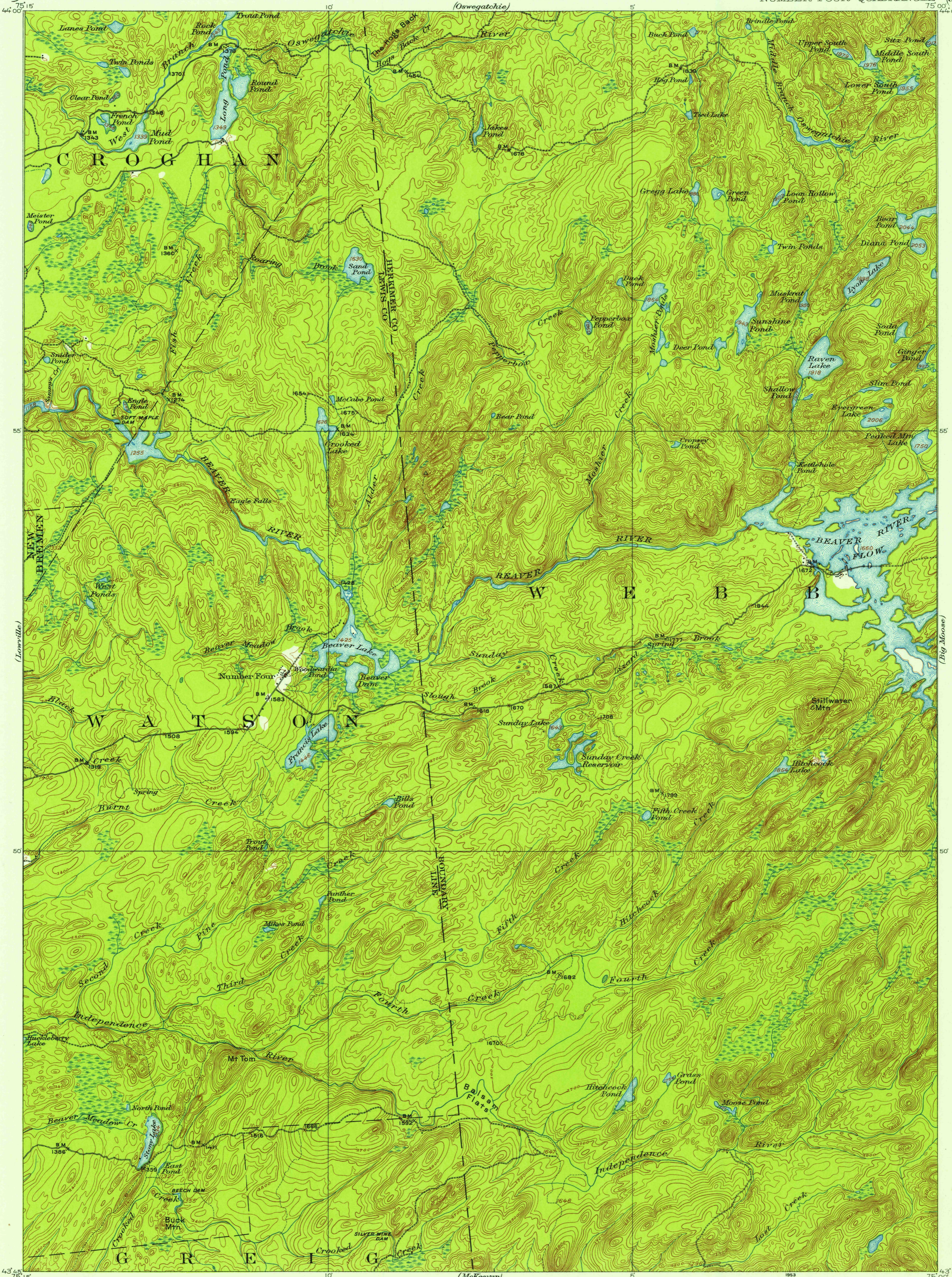
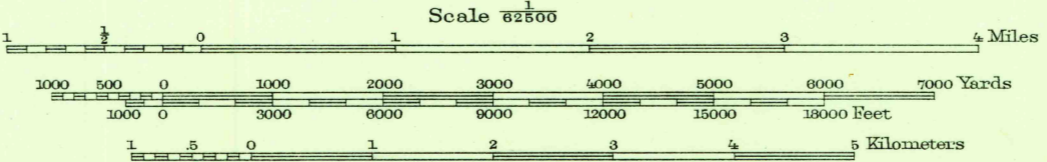


U.S.G.S.
FILE COPY
Inspection and Editing.



(Lake Denmark) 75° 15' 44.00"
(Lowville) 43° 45' 15.00"
(Port Leyden) 75° 15' 43.25"
R.B. Marshall, Chief Geographer.
Frank Sutton, Geographer in charge.
Topography by J.M. Whitman, R.C. McKinney, J.F. McBeth,
J.H. Le Feaver, R. Reeves, and E.E. Witherspoon.
Control by Sledge Tatum, D.H. Baldwin,
James Rayburn and Karl E. Schlachter.
Surveyed in 1910-1912.



(McKee) 75° 00' 15.00"
(Old Forge) 43° 45' 15.00"
Polyconic projection, North American datum
APPROXIMATE MEAN DECLINATION 1910.

U.S.G.S.
FILE COPY
Inspection and Editing.

N.Y.
NUMBER FOUR
N4345-W7500/15
1912

USGS
Historical File
Topographic Division

U.S.G.S.
FILE COPY
Inspection and Editing.