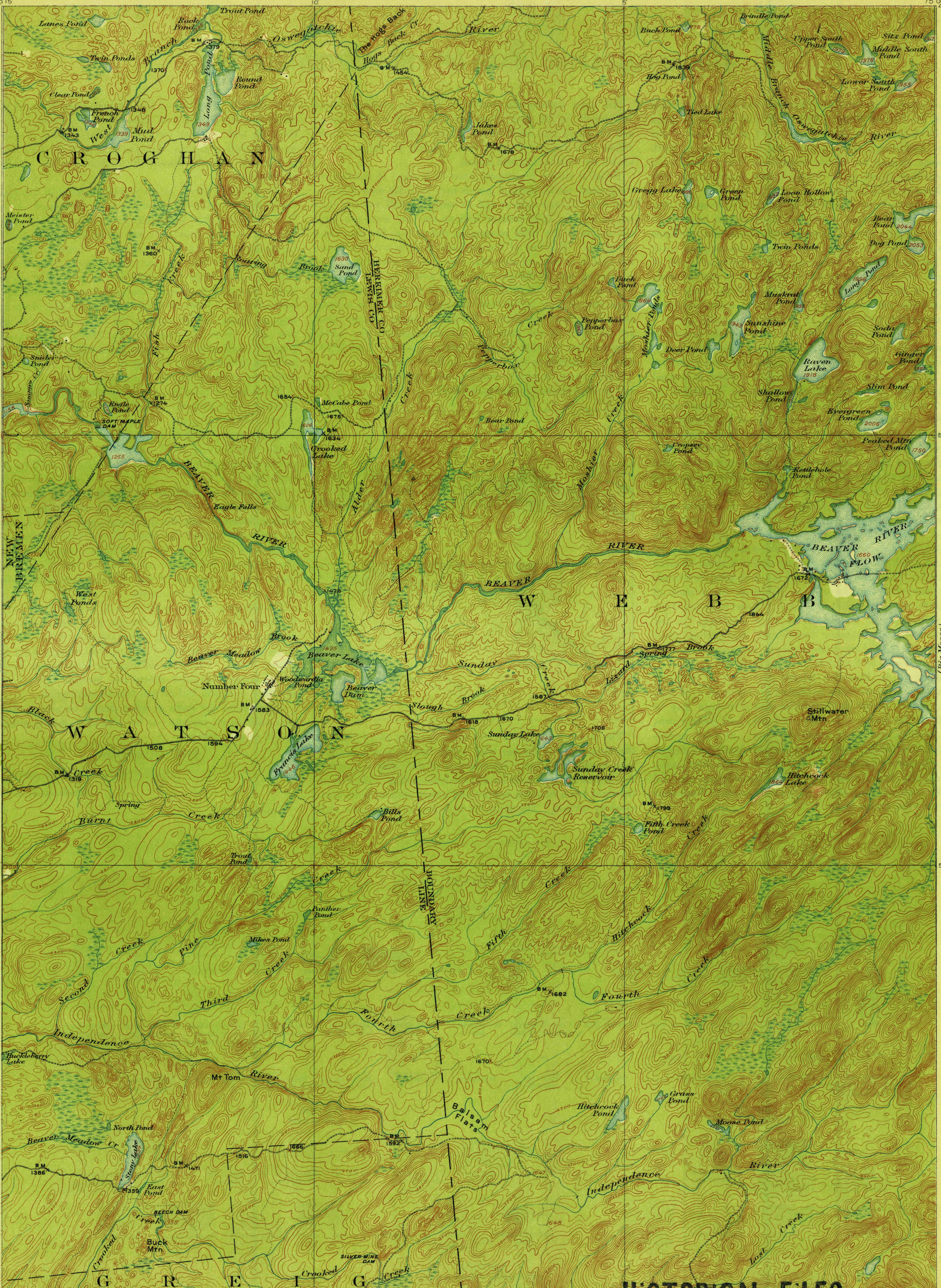


# TOPOGRAPHY

U.S. GEOLOGICAL SURVEY  
GEORGE OTIS SMITH, DIRECTOR

STATE OF NEW YORK  
J.A. BENSEL  
STATE ENGINEER AND SURVEYOR

NEW YORK  
NUMBER FOUR QUADRANGLE



RETURN TO THE BOOKCASES & FILES OF  
THE HYDRO-COMPUTING SECTION, WATER  
RESOURCES BRANCH, UNITED STATES  
GEOLOGICAL SURVEY, WASHINGTON, D. C.

ENGRAVED JUNE 1914 BY U.S.G.S.  
R.B. Marshall, Chief Geographer.  
Frank Sutton, Geographer in charge.  
Topography by J.M. Whitman, R.C. McKinney, J.F. McBeth,  
J.H. Le Feaver, R. Reeves, and E.E. Witherspoon.  
Control by Sledge Tatum, D.H. Baldwin,  
James Rayburn and Karl E. Schlachter.  
Surveyed in 1910-1912.  
SURVEYED IN COOPERATION WITH THE STATE OF NEW YORK.

Scale 62500  
1 2 3 4 5 Miles  
1 2 3 4 5 Kilometers  
Contour interval 20 feet.  
Datum is mean sea level.

**HISTORICAL FILES**

**(DO NOT REMOVE)** SURFACE WATER BRANCH  
SPECIAL REPORTS SECTION  
NUMBER FOUR

Pass

(Old Forge)