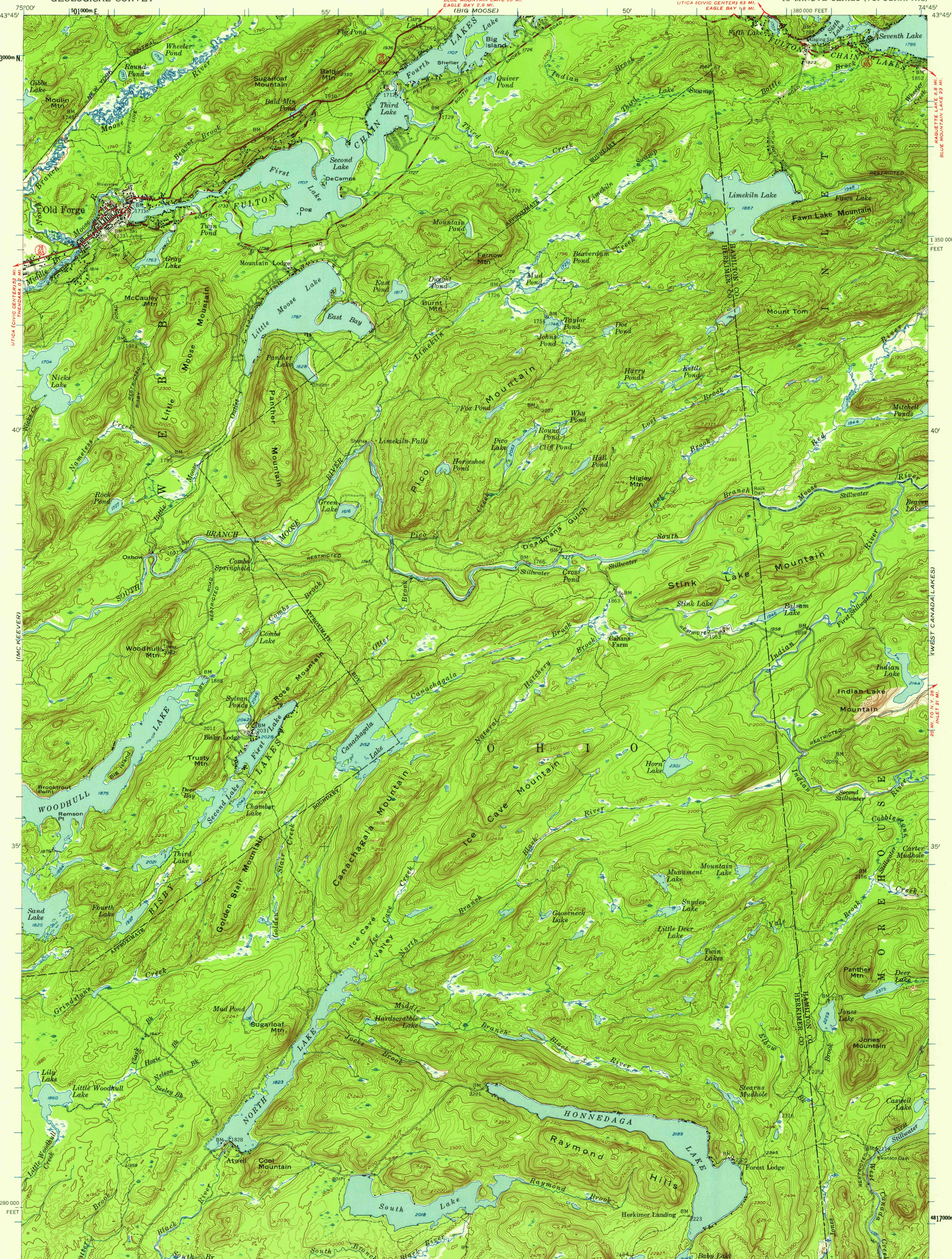
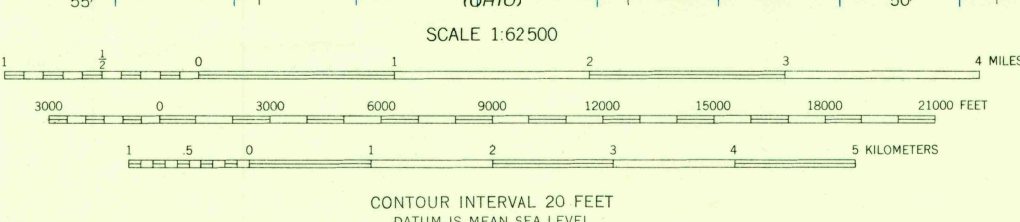


UNITED STATES
DEPARTMENT OF THE INTERIOR
GEOLOGICAL SURVEY

OLD FORGE QUADRANGLE
NEW YORK
15 MINUTE SERIES (TOPOGRAPHIC)



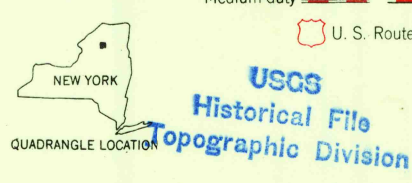
Mapped, edited, and published by the Geological Survey
Control by USGS and USC&GS
Topography from aerial photographs by photogrammetric methods. Aerial photographs taken 1953. Field check 1954
Polyconic projection. 1927 North American datum
10,000-foot grid based on New York coordinate system, east zone
Entire map lies within Adirondack State Park
Unchecked elevations are shown in brown
1000-meter Universal Transverse Mercator grid ticks, zone 18, shown in blue



ROAD CLASSIFICATION

Heavy-duty ——— Light-duty ———
Medium-duty ——— Unimproved dirt ———

U.S. Route State Route



OLD FORGE, N. Y.
N4330-W7445/15
1954

THIS MAP COMPLIES WITH NATIONAL MAP ACCURACY STANDARDS
FOR SALE BY U. S. GEOLOGICAL SURVEY, WASHINGTON 25, D. C.
A FOLDER DESCRIBING TOPOGRAPHIC MAPS AND SYMBOLS IS AVAILABLE ON REQUEST

U.S.G.S.
FILE COPY
TOPOGRAPHIC DIVISION

JAN 20 1959

9835