

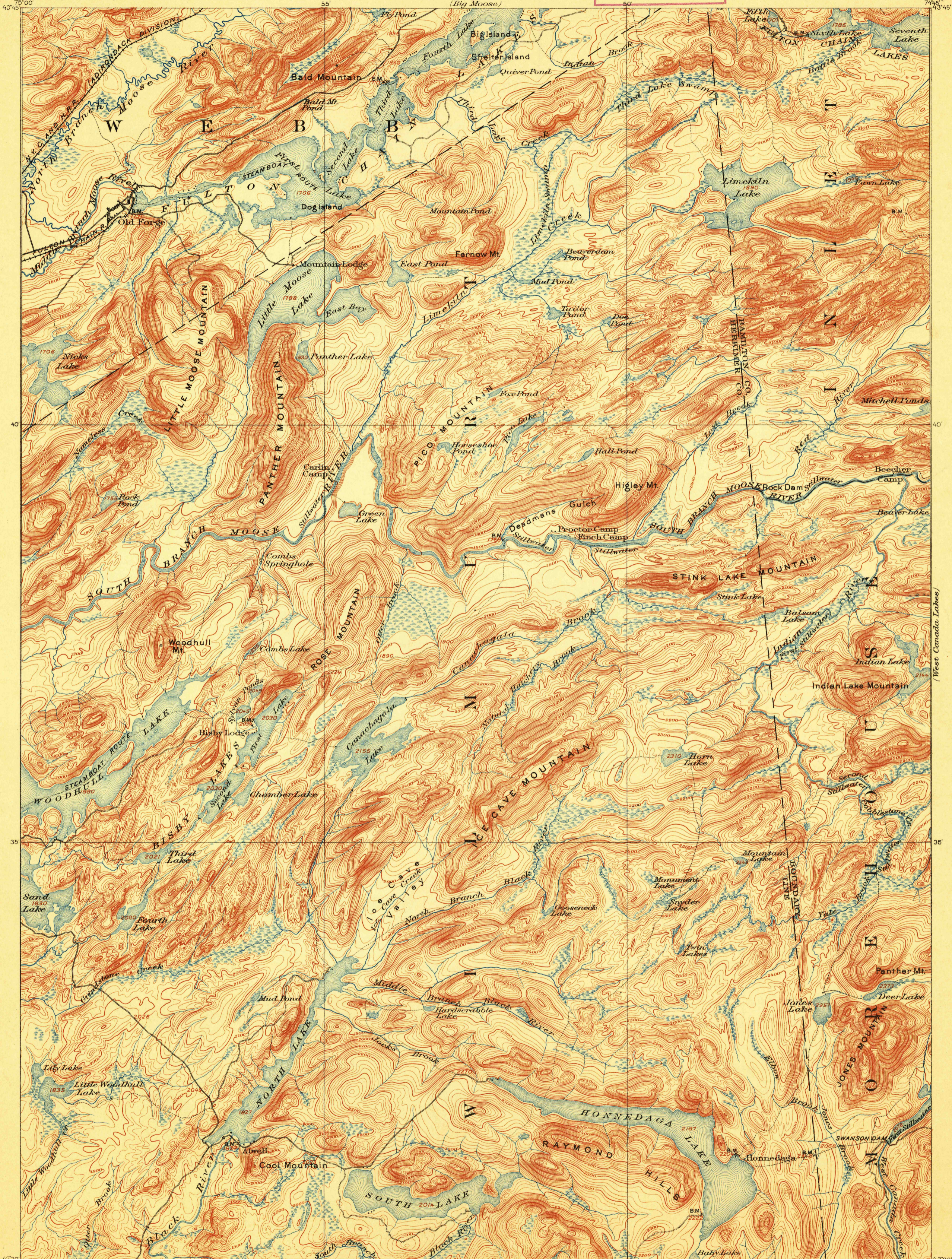
TOPOGRAPHY

STATE OF NEW YORK
REPRESENTED BY THE
STATE ENGINEER AND SURVEYOR
(Big Moose)

U. S. G. S.
FILE COPY
Ed. Div. Topographic Maps.

U. S. GEOLOGICAL SURVEY
GEORGE OTIS SMITH, DIRECTOR

NEW YORK
OLD FORGE QUADRANGLE

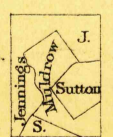


U. S. G. S.
FILE COPY
Ed. Div. Topographic Maps.

U. S. G. S.
FILE COPY
Ed. Div. Topographic Maps.

U. S. G. S.
FILE COPY
Ed. Div. Topographic Maps.

ENGRAVED JUNE 1900 BY U. S. G. S.
H. M. Wilson, Geographer in charge.
Control by W. J. Peters and J. H. Jennings.
Topography by Robert Muldrow, Frank Sutton and J. H. Jennings.
Surveyed in 1892-1893 and 1897-98, in cooperation with the
State of New York.



Scale 1:62,500
Miles
Kilometers

Contour interval 20 feet.
Datum is mean sea level.

USGS
Historical File
Topographic Division

Ed. Div. Topographic Maps.
Edition of Mar. 1901, reprinted Oct. 1909.

NOV 30 1909. 2579

OLD FORGE N.Y.