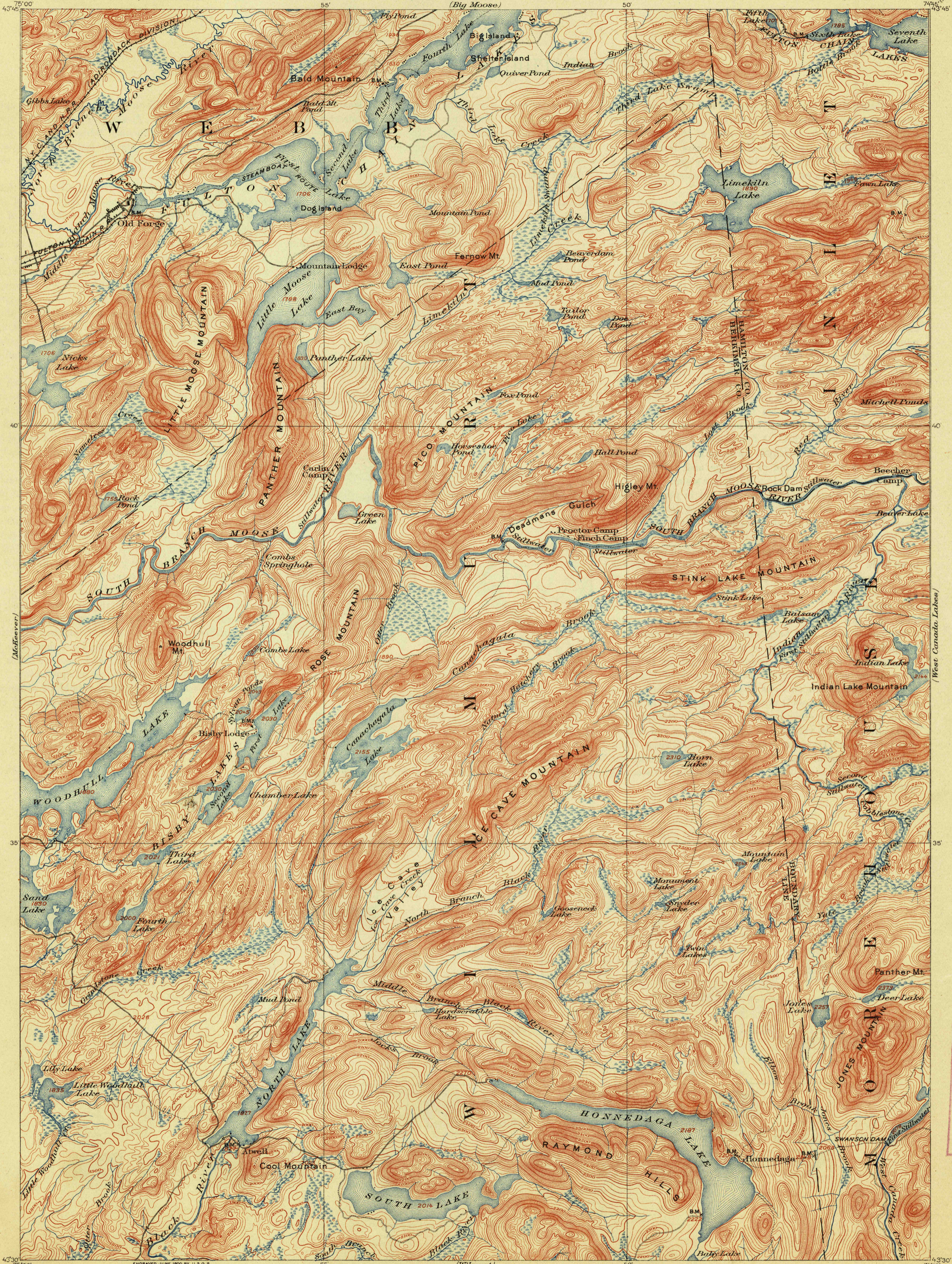


# TOPOGRAPHY

STATE OF NEW YORK  
REPRESENTED BY THE  
STATE ENGINEER AND SURVEYOR  
(Big Moose)

NEW YORK  
OLD FORGE QUADRANGLE

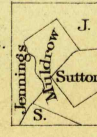
U.S. GEOLOGICAL SURVEY  
GEORGE OTIS SMITH, DIRECTOR



U.S.G.S.  
FILE COPY  
Ed. Div., Topographic Maps.

U.S.G.S.  
FILE COPY  
Ed. Div., Topographic Maps.

H. M. Wilson, Geographer in charge.  
Control by W. J. Peters and J. H. Jennings.  
Topography by Robert Muldrow, Frank Sutton and J. H. Jennings.  
Surveyed in 1892-1893 and 1897-98, in cooperation with the  
State of New York.



Scale 62500  
1 2 3 4 5 Miles  
1 2 3 4 5 Kilometers

Contour interval 20 feet.  
Datum is mean sea level.

USGS  
Historical File  
Topographic Division

Edition of Mar. 1901, reprinted June 1913.

JUL 31 1913 3493

OLD FORGE, N.Y.