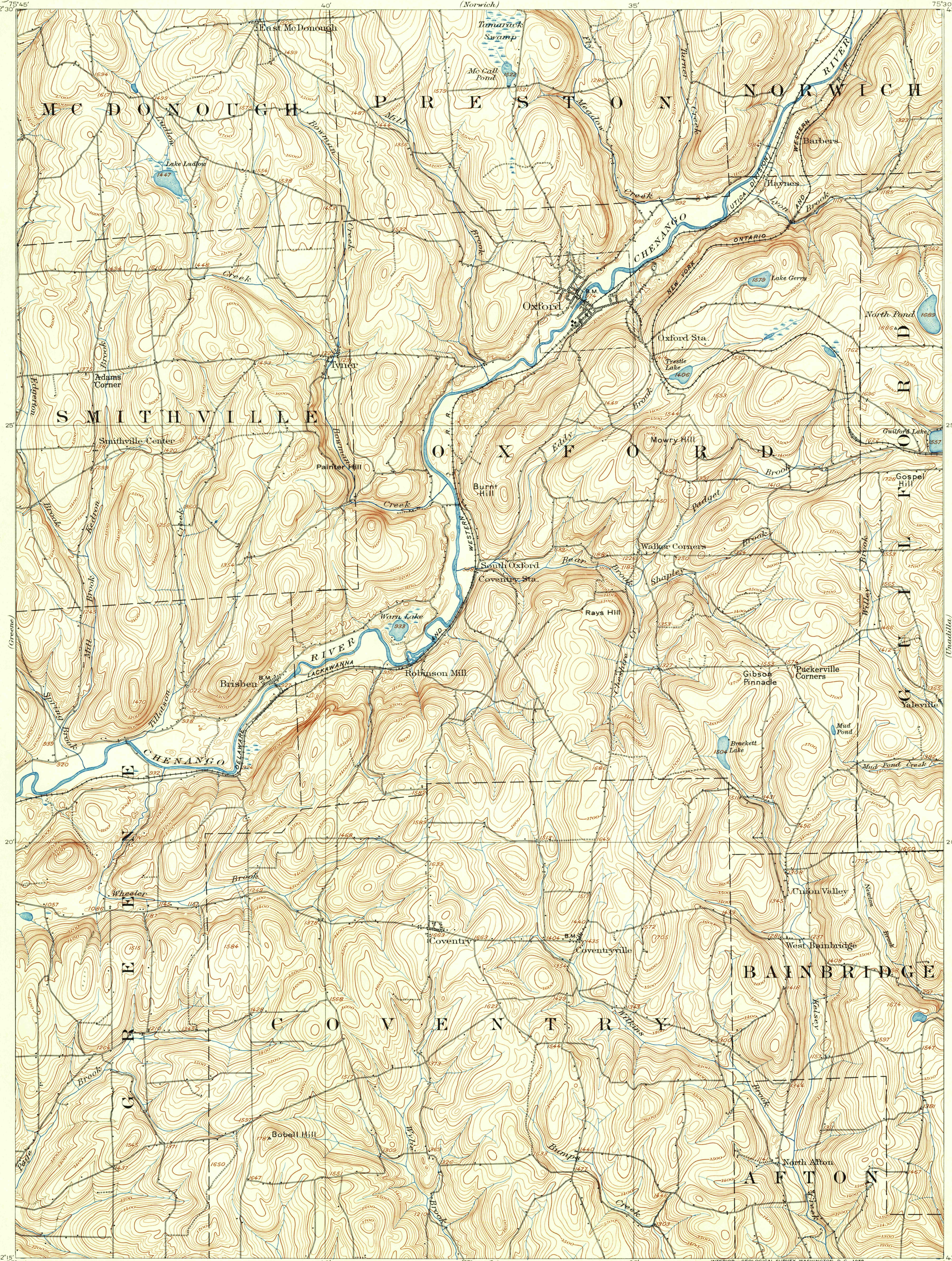


(New Berlin)



U.S.G.S.  
FILE COPY  
TOPOGRAPHIC DIVISION

H.M. Wilson, Geographer in charge.  
Control by E.L. McNair, W.T. Griswold, and J.M. Whitman.  
Topography by J.H. Jennings and Gilbert Young.



CONTOUR INTERVAL 20 FEET  
DATUM IS MEAN SEA LEVEL

FOR SALE BY U.S. GEOLOGICAL SURVEY, WASHINGTON 25, D.C.  
A FOLDER DESCRIBING TOPOGRAPHIC MAPS AND SYMBOLS IS AVAILABLE ON REQUEST

Polyconic projection. 1927 North American datum

This map reprinted with minor change  
For later and more detailed surveys see  
1:24,000 scale maps of the Oxford, Tynar,  
Brisben, and West Bainbridge quadrangles,  
surveyed in 1949.

USGS  
Historical File  
Topographic Division

OXFORD, N.Y.  
N 4215-W 7530/15

1902

FEB 11 1958

2955