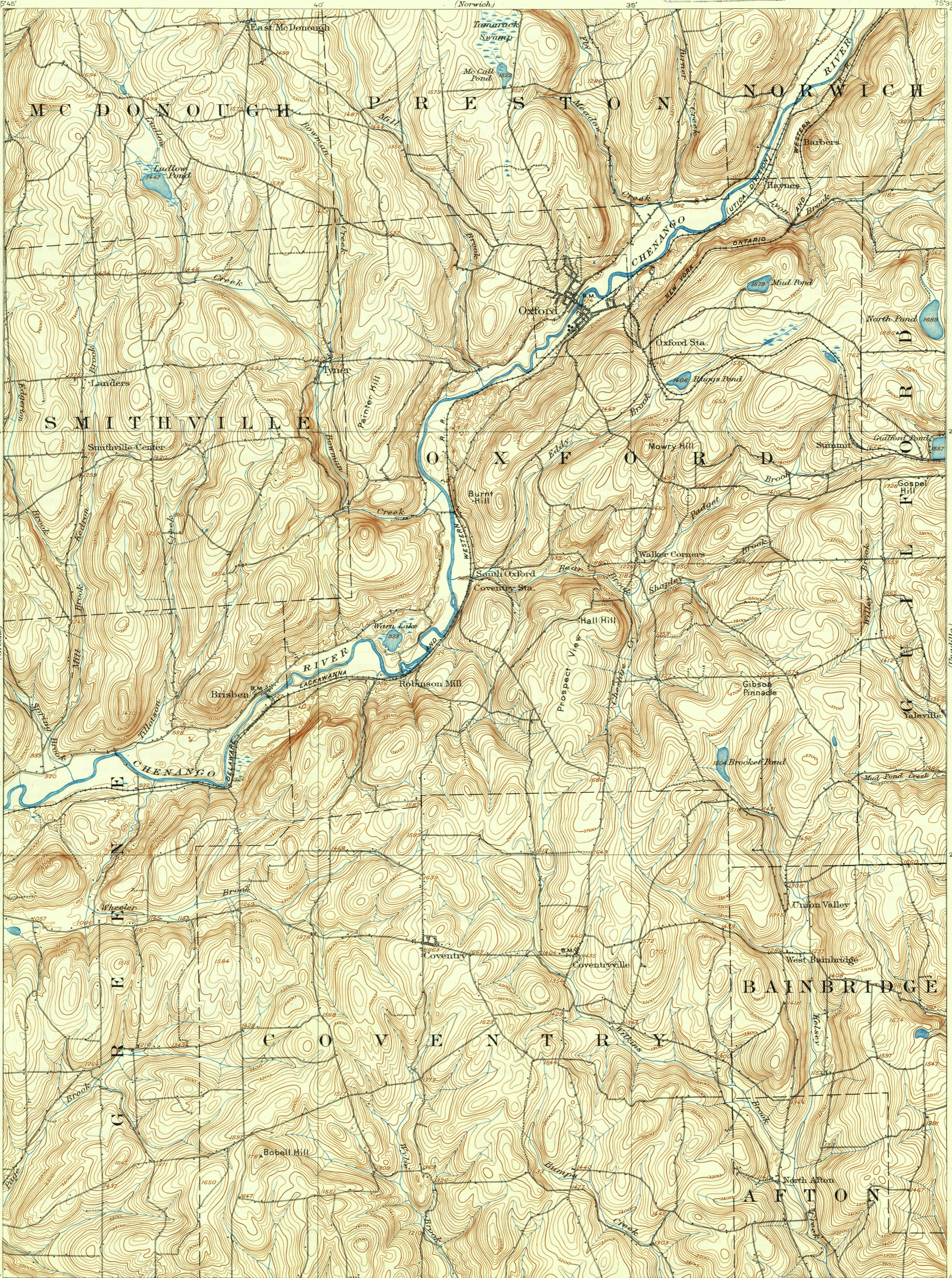


New Berlin
42°30'



15 Miles
14
13
12
11
10
9
8
7
6
5
4
3
2
1
0
1
2
3
4
5
6
7
8
9
10
11
12
13
14
15 Miles
(Unadilla)

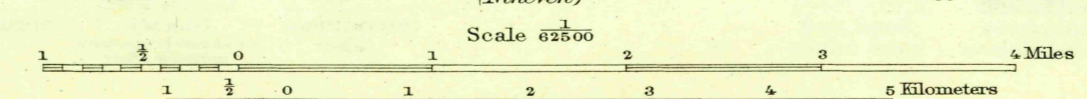
(Pulaski) 75°45'
42°30'

42°15'
75°45'

75°30'
42°30'

H.M. Wilson, Geographer in charge.
Control by E.L. McNair, W.T. Griswold, and J.M. Whitman.
Topography by J.H. Jennings and Gilbert Young.

SURVEYED IN 1902 IN COOPERATION WITH THE STATE OF NEW YORK.



Contour interval 20 feet.
Datum is mean sea level.

Edition of Dec. 1904, reprinted 1943
Polyconic projection.

USGS
Historical File
Topographic Division

OXFORD, N.Y.

N 4215-W 7530/15

JAN 11 1944

U.S.G.S.
FILE COPY
Transcription and Editing.

4335