

TOPOGRAPHY

STATE OF NEW YORK
REPRESENTED BY THE
STATE ENGINEER AND SURVEYOR
(Stamford)

NEW YORK - CONNECTICUT
OYSTER BAY QUADRANGLE

U.S. GEOLOGICAL SURVEY
GEORGE OTIS SMITH, DIRECTOR

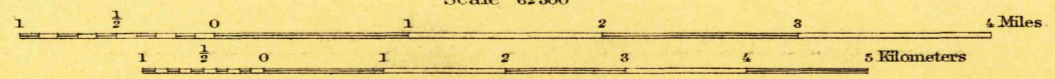
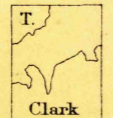


U.S.G.S.
FILE COPY
Ed. Div. Topographic Maps.

U.S.G.S.
FILE COPY
Ed. Div. Topographic Maps.

U.S.G.S.
FILE COPY
Ed. Div. Topographic Maps.

ENGRAVED AUG. 1899 BY U.S.G.S.
H.M. Wilson, Geographer in charge.
Triangulation by U.S. Coast and Geodetic Survey.
Topography by E.B. Clark and J.W. Thom.
Surveyed in 1897.



Contour interval 20 feet.
Datum is mean sea level.

USGS
Historical File
Topographic Division

Edition of Oct. 1900, reprinted Sept. 1909.

NOV 20 1909 2593

OYSTER BAY, NY.