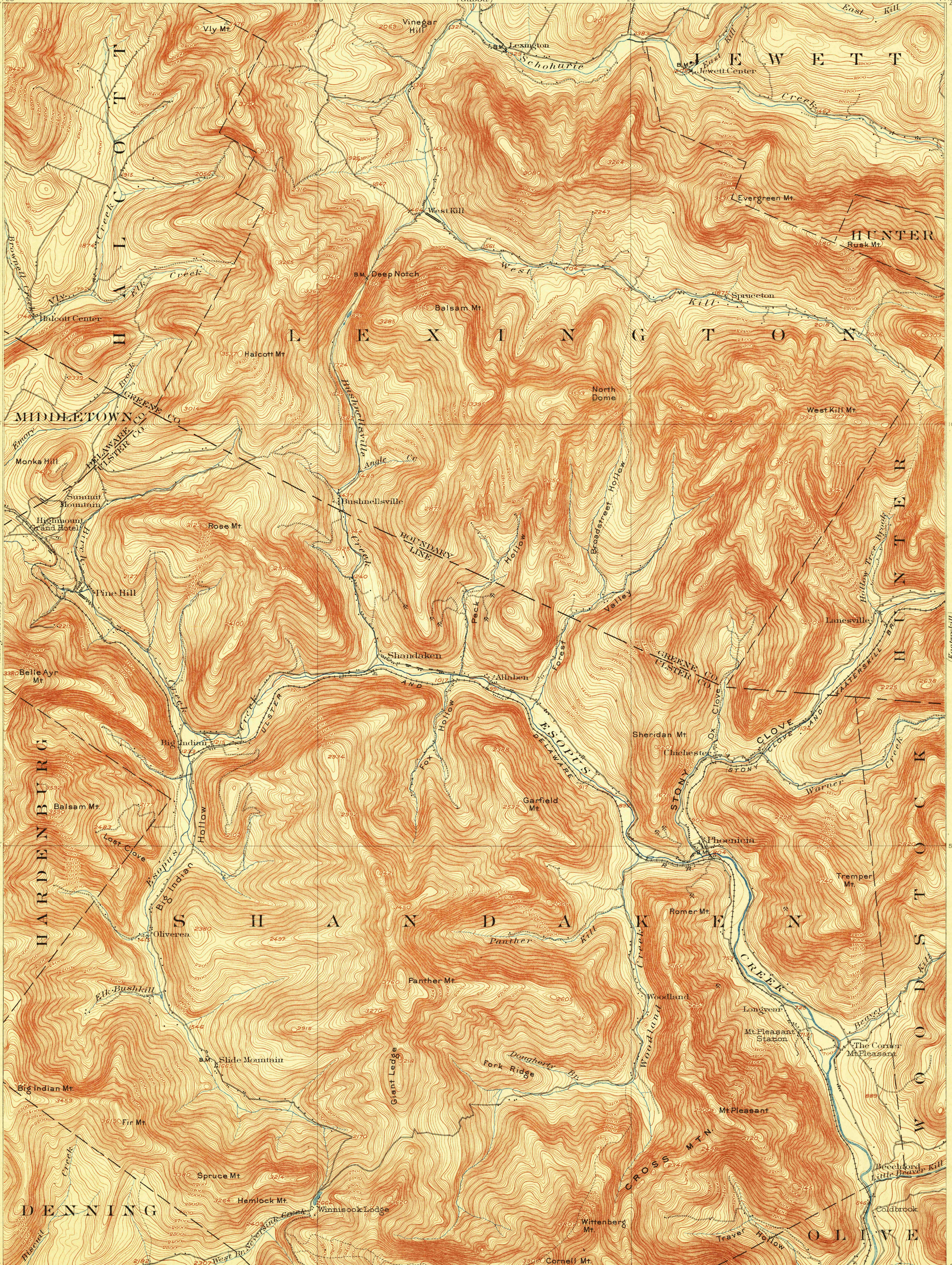


TOPOGRAPHY

STATE OF NEW YORK
REPRESENTED BY THE
STATE ENGINEER AND SURVEYOR

NEW YORK
PHOENICIA QUADRANGLE

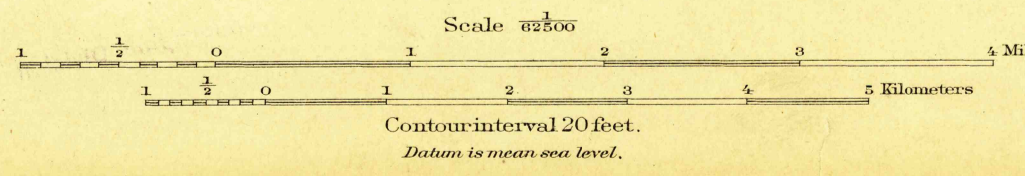
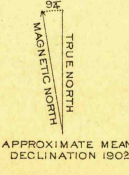
U. S. GEOLOGICAL SURVEY
CHARLES D. WALCOTT, DIRECTOR



U. S. G. S.
FILE COPY
Ed. Div. Topographic Maps.

U. S. G. S.
FILE COPY
Ed. Div. Topographic Maps.

ENGRAVED FEB. 1903 BY U.S.G.S.
H.M. Wilson, Geographer in charge.
Control by S.S. Gannett and H.B. Paige.
Topography by C.C. Bassett.
Surveyed in 1900 in cooperation with the State of New York.



Aug. 1903, reprinted Mar. 1906.

USGS
Historical File
Topographic Division

U.S. Geological Survey,
MAR 20 1906
Ed. Div. Topographic Maps.

Phoenicia, N.Y.