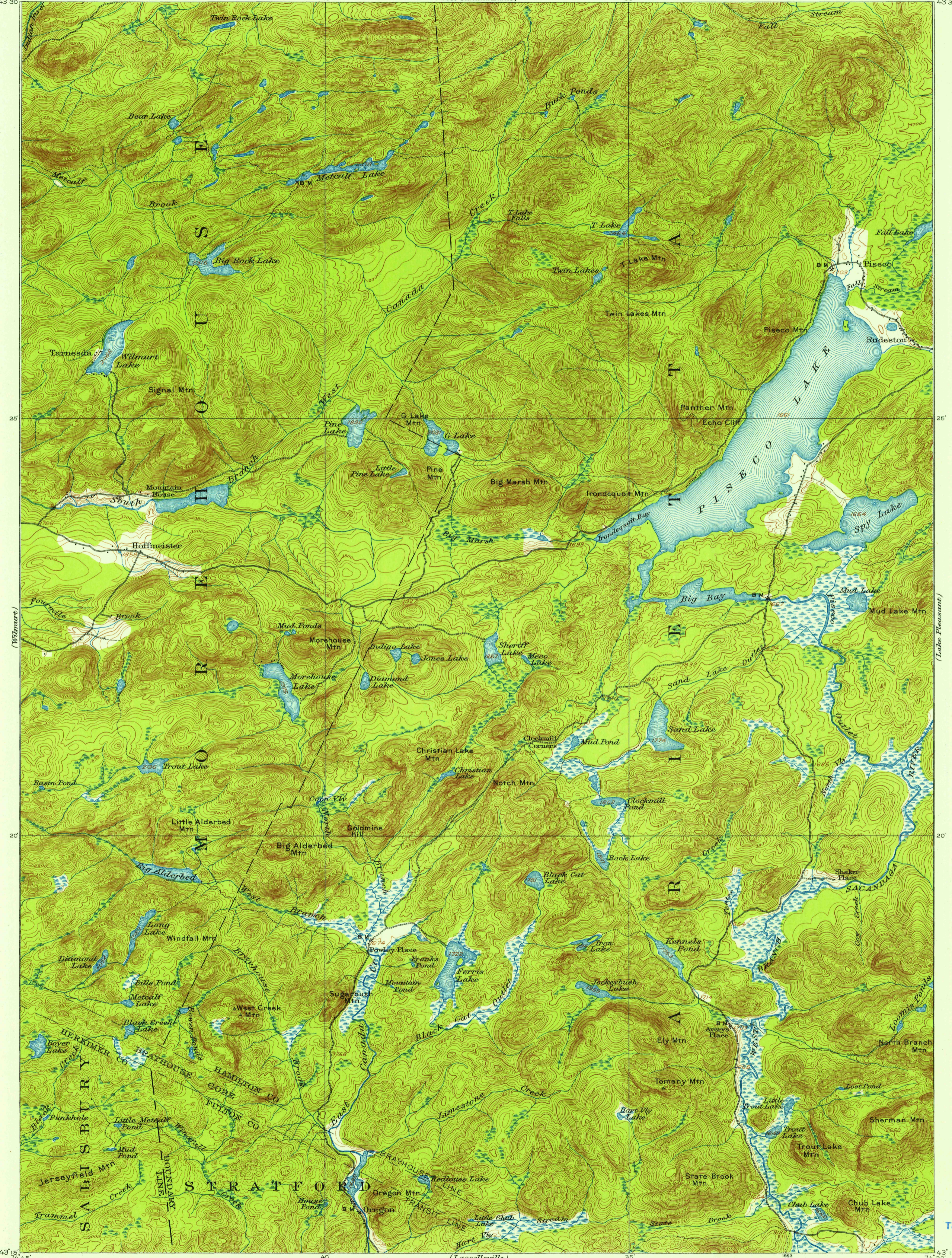
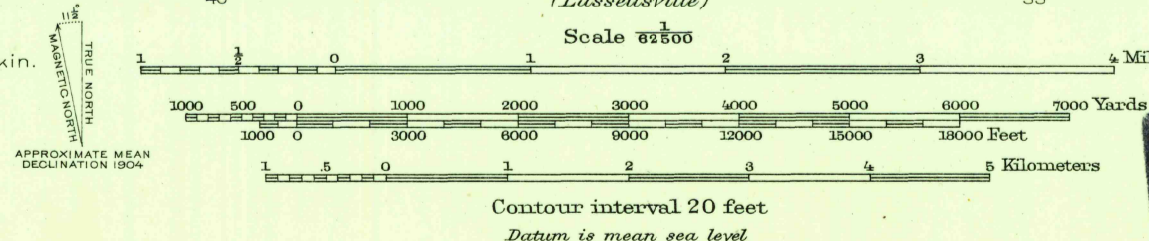


U. S. G. S.
FILE COPY
Inspection and Editing.



H. M. Wilson, Geographer.
J. H. Jennings, in charge of section.
Topography by Glenn S. Smith, J. M. Whitman, and J. R. Eakin.
Assistants, A. P. Meade, O. C. Merrill, Fred Graff, Jr.,
and F. T. Fitch.
Control by E. L. McNair and Gilbert Young.
Surveyed in 1902-1904.



U. S. G. S.
FILE COPY
Inspection and Editing.

PISECO LAKE, N. Y.
N 4315-W 7430/15
1904

FOR SALE BY U. S. GEOLOGICAL SURVEY, WASHINGTON 25, D. C.
A FOLDER DESCRIBING TOPOGRAPHIC MAPS AND SYMBOLS IS AVAILABLE ON REQUEST

USGS
Historical File
Topographic Division

JUN 16 1953
2735