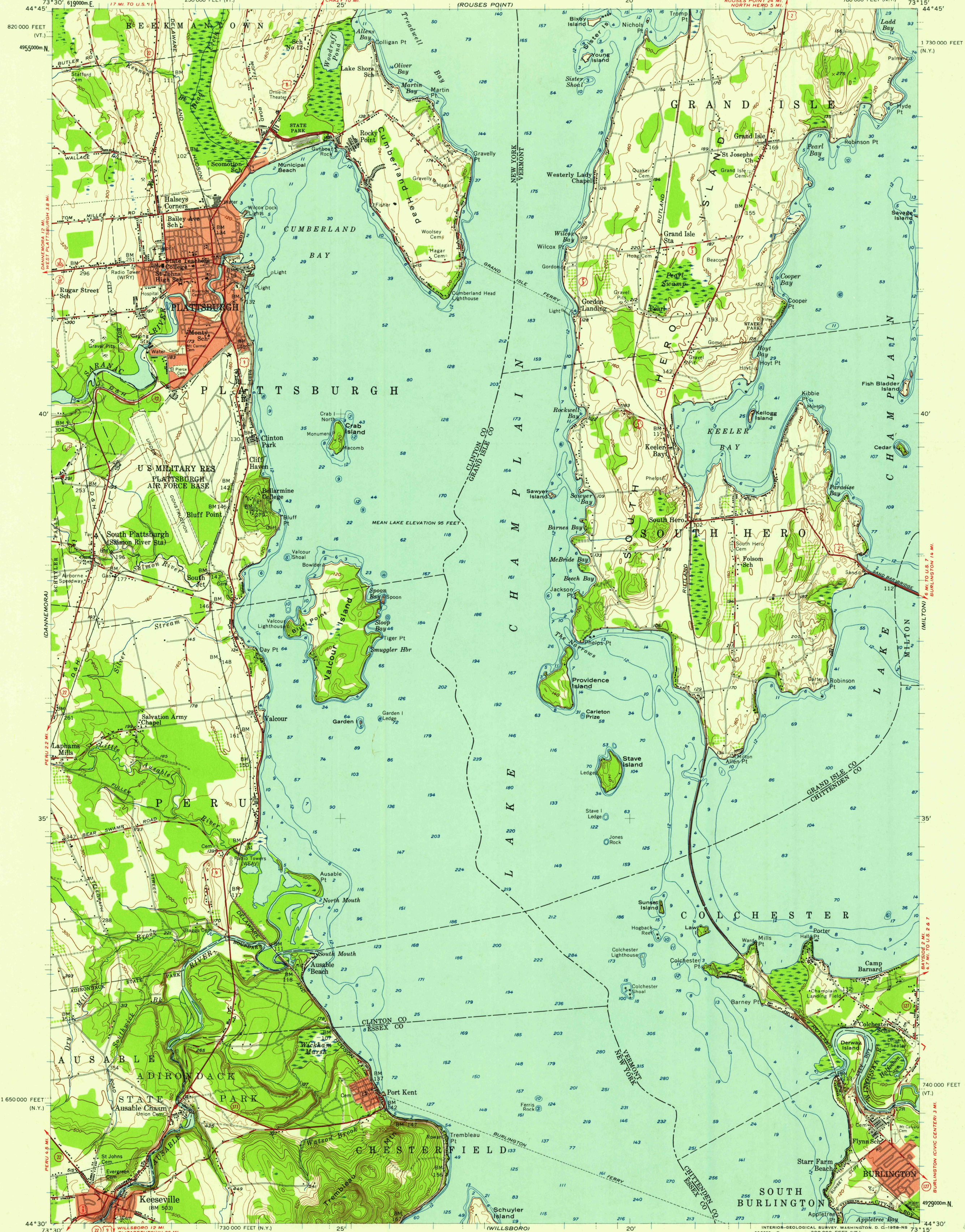


UNITED STATES
DEPARTMENT OF THE INTERIOR
GEOLOGICAL SURVEY

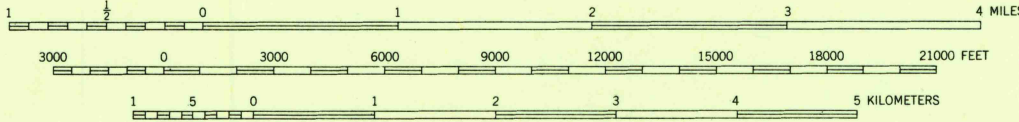
PLATTSBURGH QUADRANGLE
NEW YORK-VERMONT
15 MINUTE SERIES (TOPOGRAPHIC)



Mapped, edited, and published by the Geological Survey
Control by USGS and USC&GS

Culture and drainage in part compiled from aerial photographs
taken 1939. Topography by planetable surveys 1939
Culture revised by photogrammetric methods from aerial photographs
taken 1954. Field check 1956
Hydrography compiled from U. S. Lake Survey charts 171
and 172 (1952)

Polyconic projection. 1927 North American datum
10,000-foot grids based on New York coordinate system,
east zone, and Vermont coordinate system
1000-meter Universal Transverse Mercator grid ticks,
zone 18, shown in blue
Red tint indicates areas in which only
landmark buildings are shown



CONTOUR INTERVAL 20 FEET
DATUM IS MEAN SEA LEVEL
DEPTH CURVES AND SOUNDINGS IN FEET-DATUM IS MEAN LOW LAKE LEVEL 92.5 FEET



ROAD CLASSIFICATION
Heavy-duty ——— Light-duty ———
Medium-duty ——— Unimproved dirt ———
U.S. Route ——— State Route ———

PLATTSBURGH, N. Y.-VT.
N4430-W7315/15
1956

U.S.G.S.
FILE COPY
TOPOGRAPHIC DIVISION

USGS
Historical File
Topogra.

JUN 27 1958

3685