

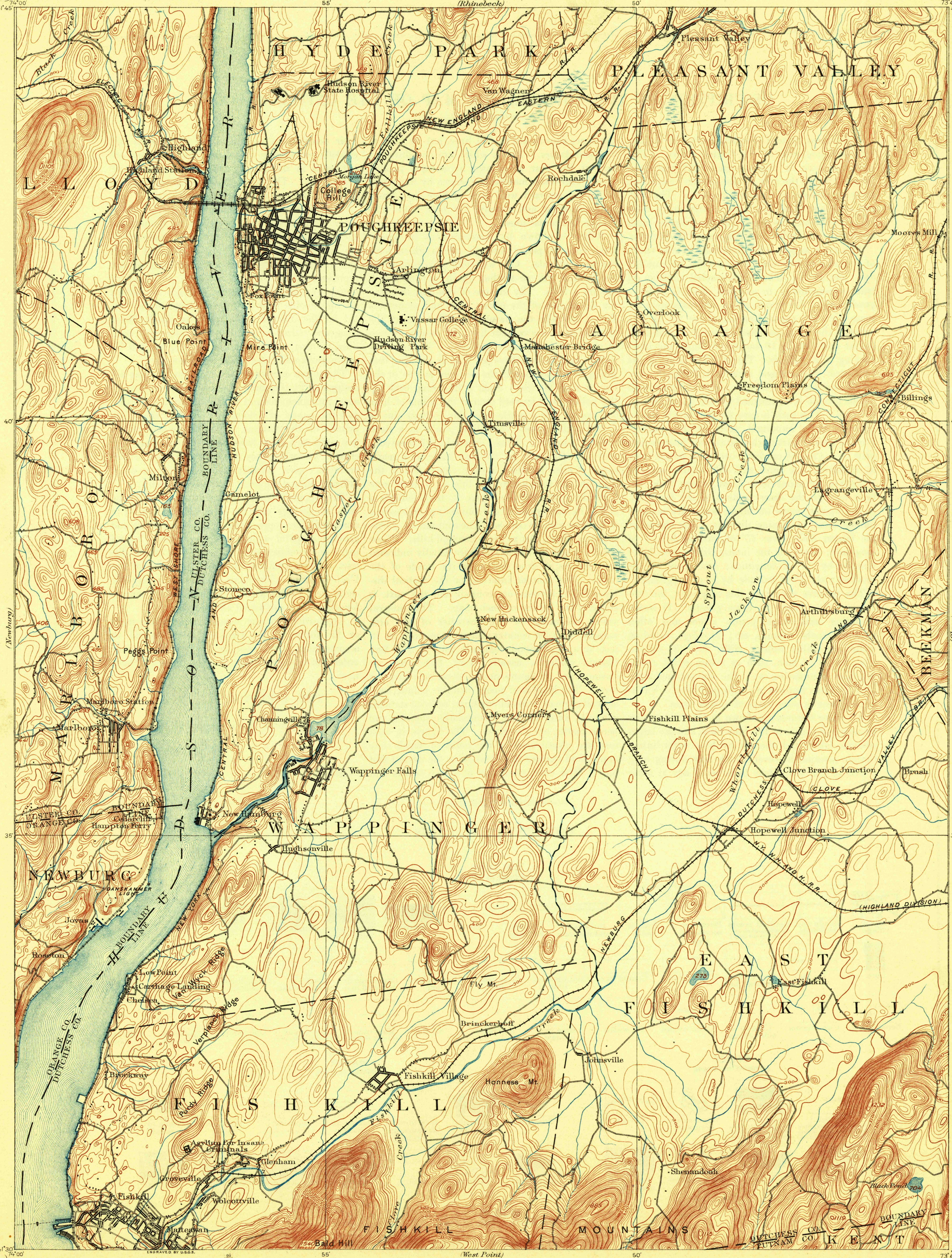
TOPOGRAPHY

U.S. GEOLOGICAL SURVEY
GEORGE OTIS SMITH, DIRECTOR

STATE OF NEW YORK
REPRESENTED BY THE
STATE ENGINEER AND SURVEYOR
(Rhinebeck)

NEW YORK
POUGHKEEPSIE QUADRANGLE

(Millsboro)

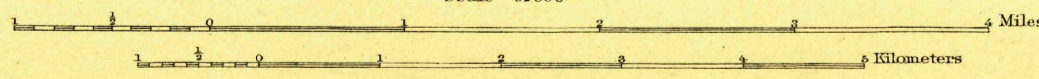


U.S. G. S.
FILE COPY
Ed. Div. Topographic Maps.

USGS
Historical File
Topographic Division

Edition of Feb. 1903, reprinted Nov. 1908.

Henry Gannett, Chief Topographer.
H.M. Wilson, Geographer in charge.
Triangulation by U.S. Coast and Geodetic Survey.
Topography by E.B. Clark and J.W. Thom.
Surveyed in 1891-92, in cooperation with the
State of New York.



DEC 31 1908 2570

POUGHKEEPSIE, N.Y.