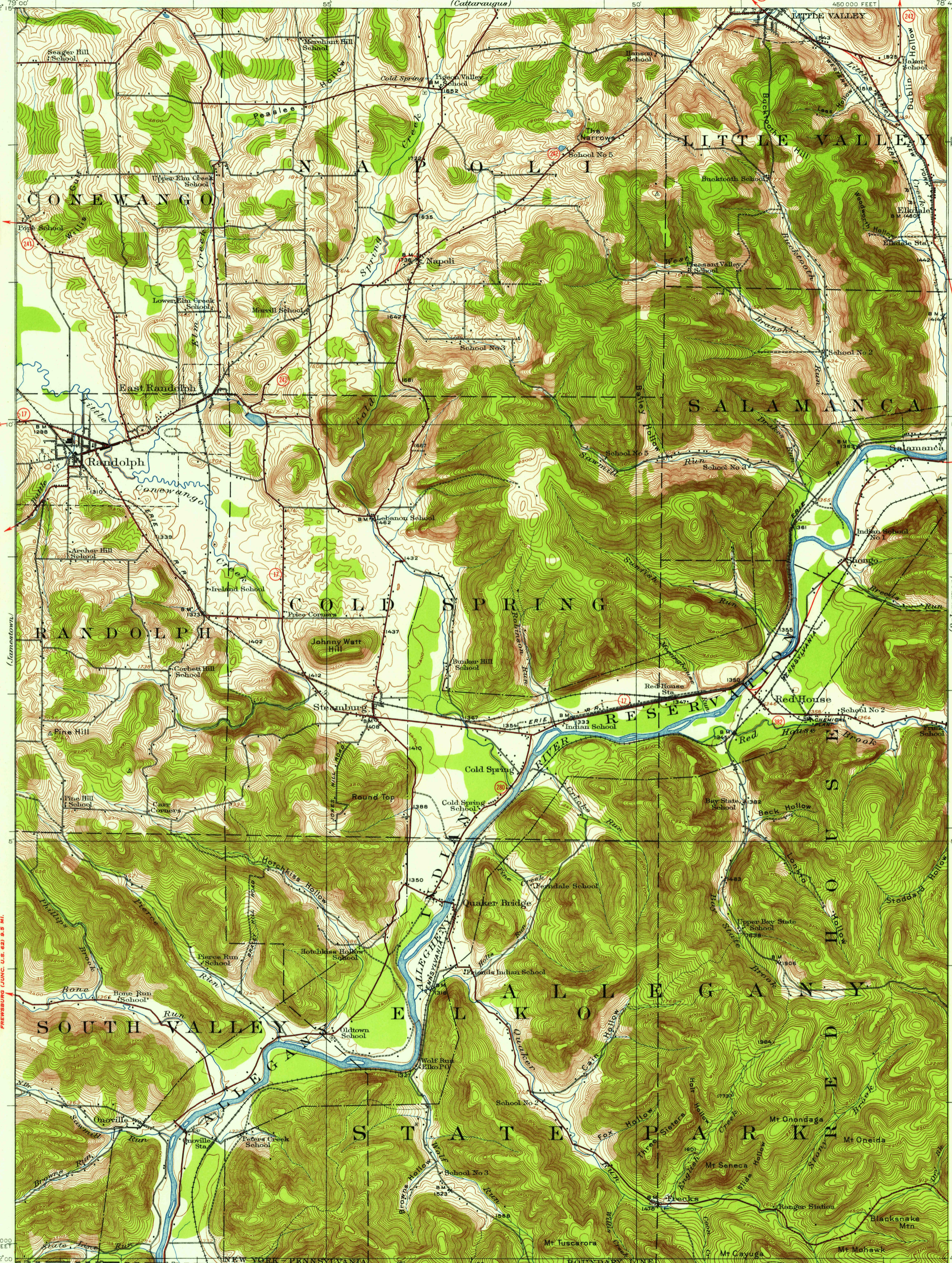
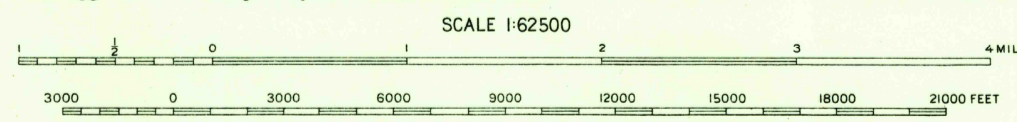


U.S.G.S.
FILE COPY
TOPOGRAPHIC DIVISION

U.S.G.S.
FILE COPY
TOPOGRAPHIC DIVISION



Topography by H.H. Hodgeson and J.L. Lewis.
Surveyed in 1922 in cooperation with the State of New York.
CONYON 1.5 MI.
KINZUA TO MI.



ROAD CLASSIFICATION
Heavy-duty 4 LANE 16 LANE Light-duty
Medium-duty 4 LANE 16 LANE Unimproved dirt
U.S. Route State Route

Polyconic projection, 1927 North American datum
10000 foot grid based on New York (West)
rectangular coordinate system

RANDOLPH, N.Y.
N4200-W7845/15
1922

FOR SALE BY U.S. GEOLOGICAL SURVEY, WASHINGTON 25, D.C.
A FOLDER DESCRIBING TOPOGRAPHIC MAPS AND SYMBOLS IS AVAILABLE ON REQUEST

USGS
Historical File
Topographic Division