

TOPOGRAPHIC SHEET

STATE OF NEW YORK

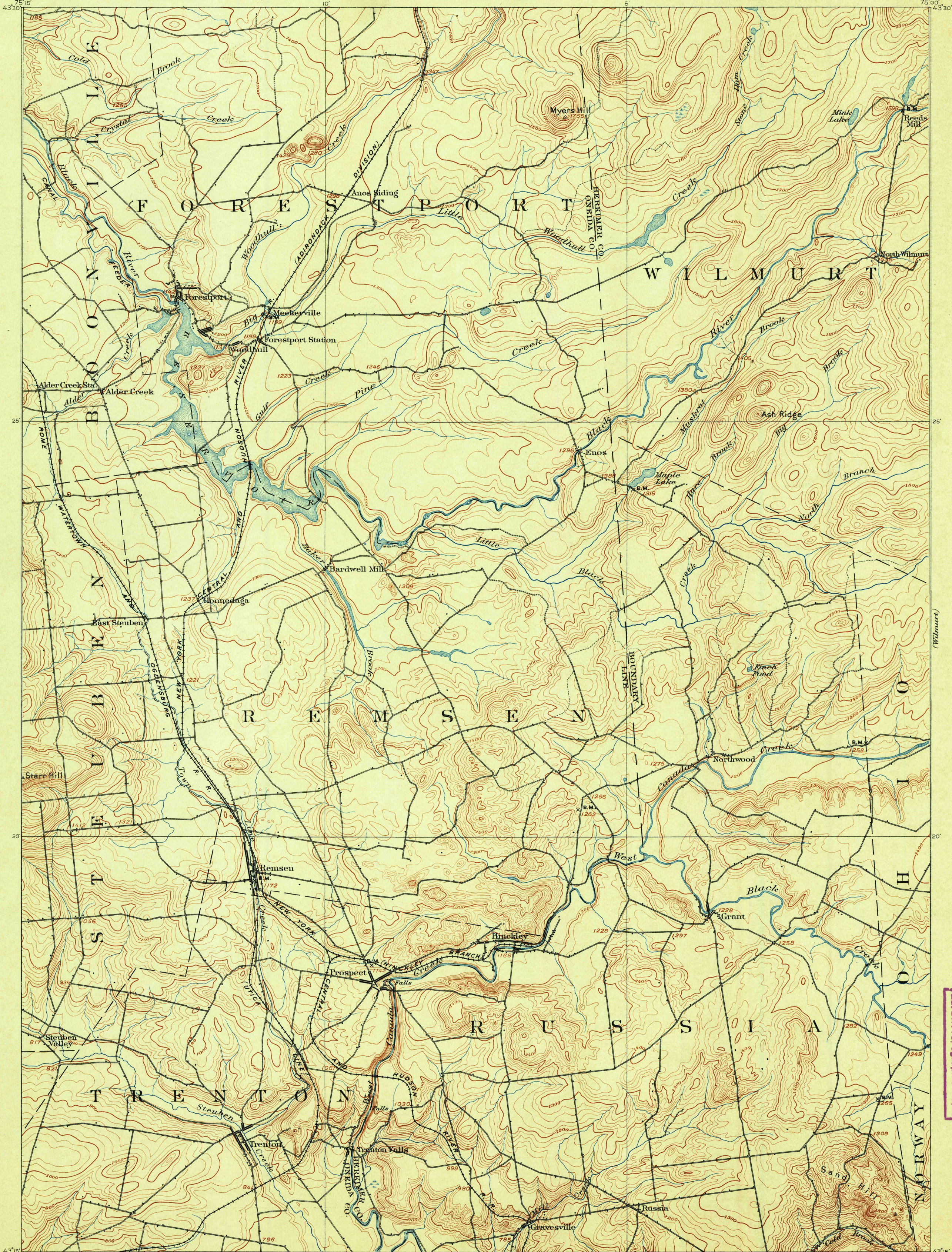
CAMPBELL W. ADAMS

STATE ENGINEER AND SURVEYOR

NEW YORK

REMSEN QUADRANGLE

U.S. GEOLOGICAL SURVEY
CHARLES D. WALCOTT, DIRECTOR



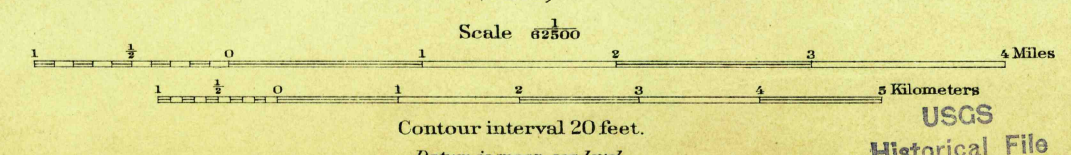
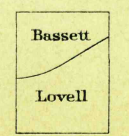
U.S.G.S.
FILE COPY
Ed. Div. Topographic Maps.

U.S.G.S.
FILE COPY
Ed. Div. Topographic Maps.

U.S.G.S.
FILE COPY
Ed. Div. Topographic Maps.

U.S.G.S.
FILE COPY
Ed. Div. Topographic Maps.

H.M. Wilson, Geographer in charge.
Control by W.J. Peters and A.M. Walker.
Topography by W.H. Lovell and C.C. Bassett.
Surveyed in 1897 in cooperation with the State of New York.



U.S. Geological Survey,
JUN 1 1900
Ed. Div. Topographic Maps.

Ed. Div. Topographic Maps.
Edition of April 1900.

USGS
Historical File
Topographic Division

Remsen
N.Y.