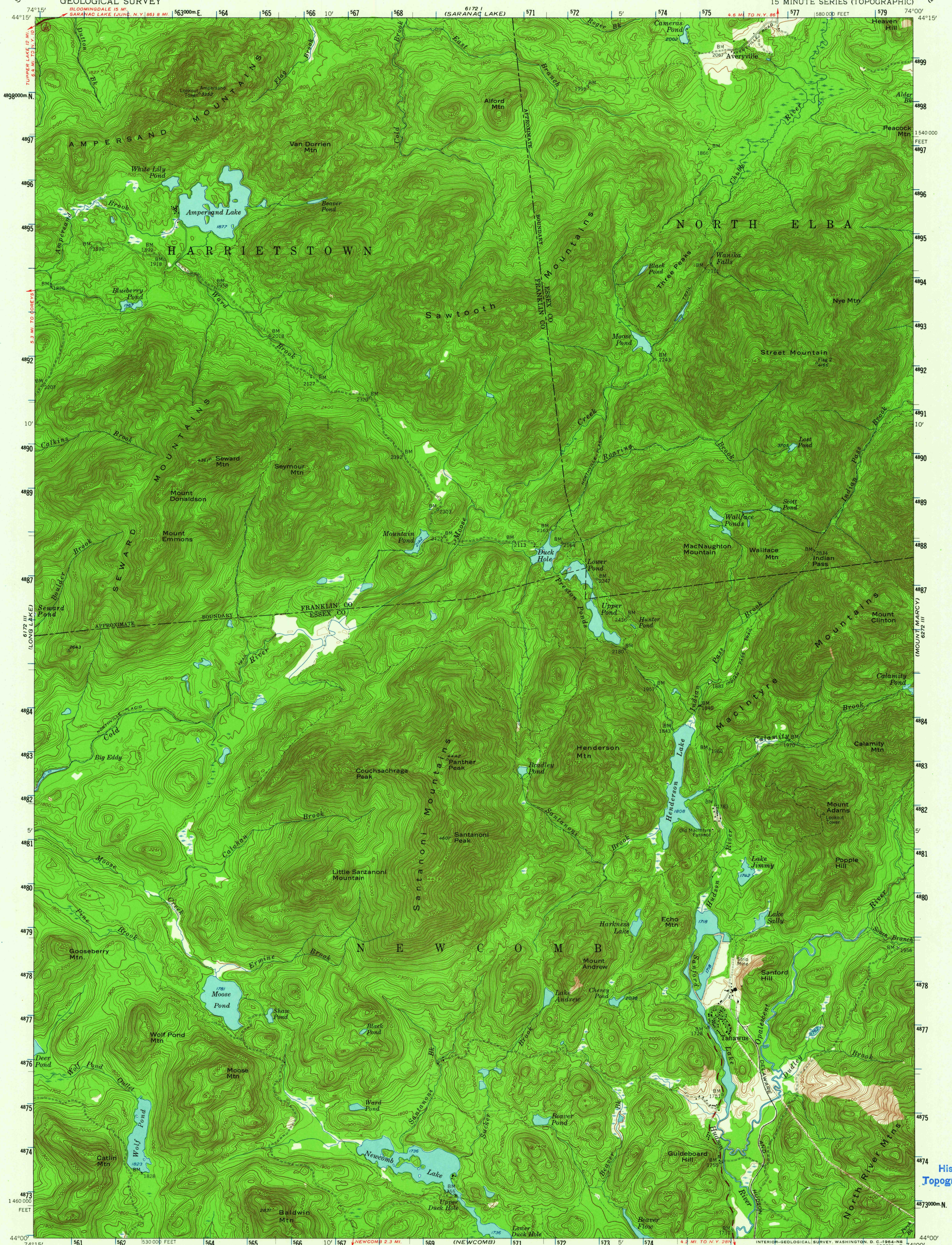


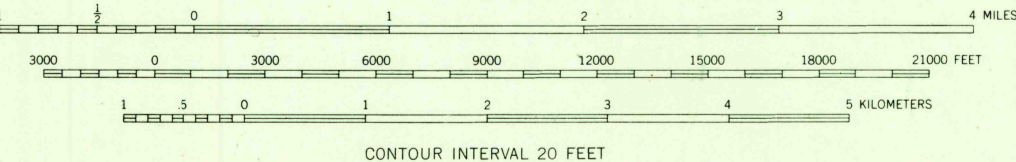
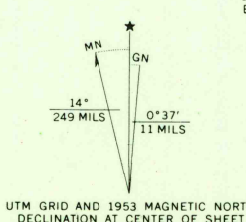
UNITED STATES
DEPARTMENT OF THE INTERIOR
GEOLOGICAL SURVEY

SANTANONI QUADRANGLE
NEW YORK
15 MINUTE SERIES (TOPOGRAPHIC)



Mapped, edited, and published by the Geological Survey
Control by USGS and USC&GS

Topography from aerial photographs by photogrammetric methods
Aerial photographs taken 1952. Field check 1953
Polyconic projection. 1927 North American datum
10,000-foot grid based on New York coordinate system,
east zone.
1000-meter Universal Transverse Mercator grid ticks,
zone 18, shown in blue
Entire area lies within the Adirondack State Park
Unchecked elevations are shown in brown



CONTOUR INTERVAL 20 FEET
DATUM IS MEAN SEA LEVEL

THIS MAP COMPLIES WITH NATIONAL MAP ACCURACY STANDARDS
FOR SALE BY U. S. GEOLOGICAL SURVEY, WASHINGTON 25, D. C.
A FOLDER DESCRIBING TOPOGRAPHIC MAPS AND SYMBOLS IS AVAILABLE ON REQUEST

ROAD CLASSIFICATION

Heavy-duty	Light-duty
Medium-duty	Unimproved dirt
	State Route



NEW YORK
QUADRANGLE LOCATION

U.S.G.S.
FILE COPY
TOPOGRAPHIC DIVISION

SANTANONI, N. Y.
N4400-W7400/15
1953
AMS 6172 II-SERIES V721

USGS
Historical File
Topographic Division

8405
MAY 5 1964