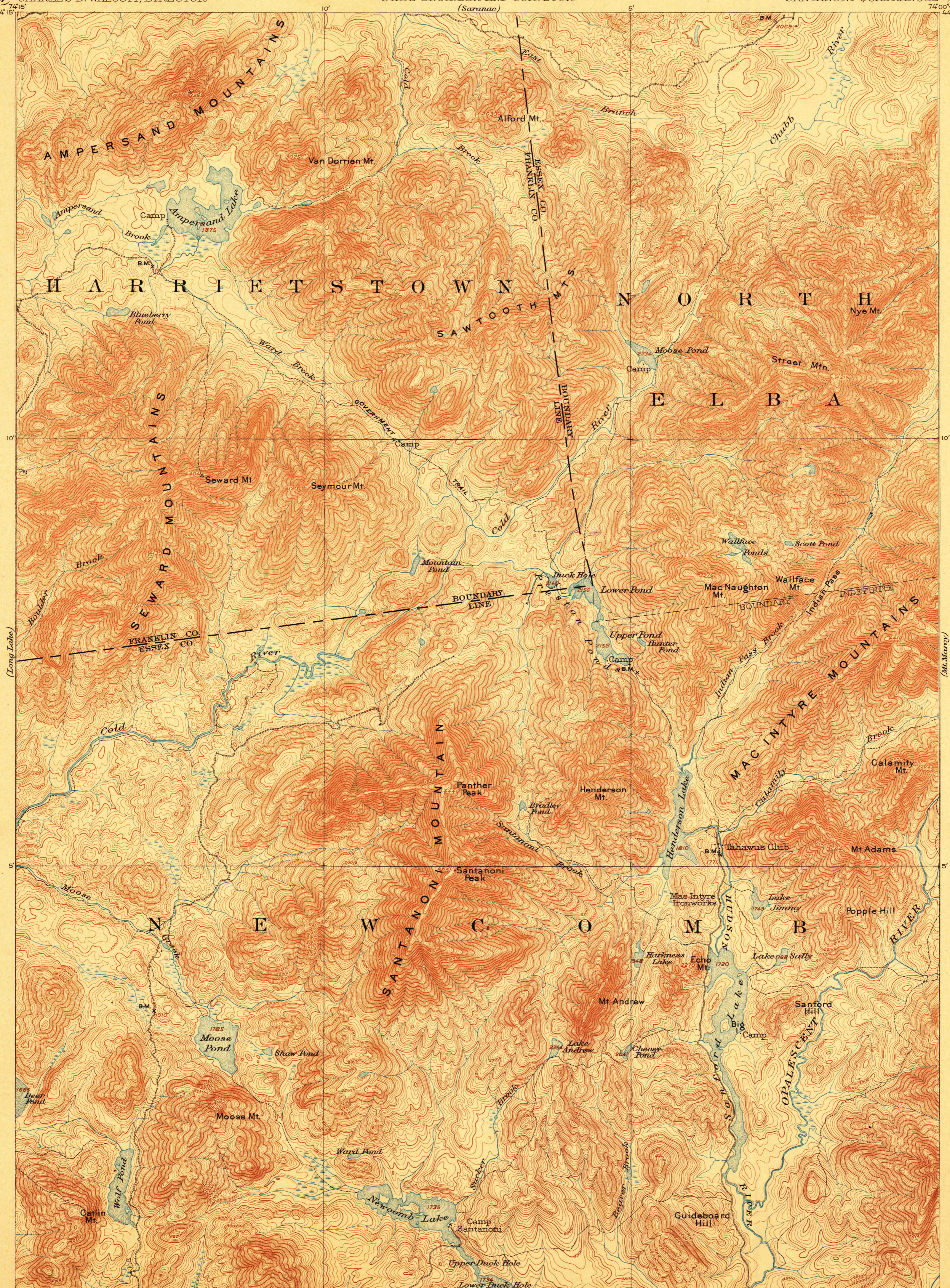


# TOPOGRAPHY

STATE OF NEW YORK  
REPRESENTED BY THE  
STATE ENGINEER AND SURVEYOR  
(Saranac)

U. S. GEOLOGICAL SURVEY  
CHARLES D. WALCOTT, DIRECTOR

NEW YORK  
SANTANONI QUADRANGLE

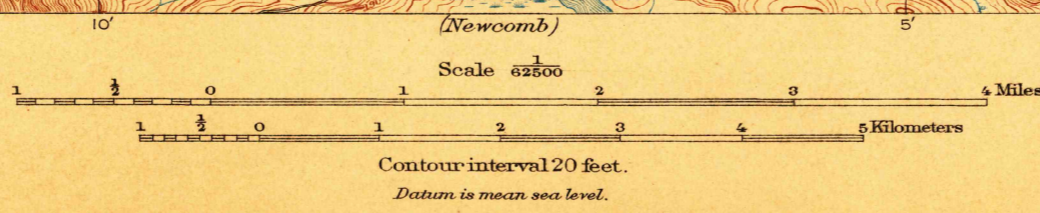


U. S. G. S.  
FILE COPY  
Ed. Div. Topographic Maps.

U. S. G. S.  
FILE COPY  
Ed. Div. Topographic Maps.

ENGRAVED OCT. 1903 BY U.S.G.S.  
H.M. Wilson, Geographer in charge.  
Triangulation by E.L. Mc Nair.  
Topography by Glenn S. Smith, E.G. Hamilton,  
Geo. H. Guerdum, J.M. Whitman, Jr., and T.F. Slaughter.  
Surveyed in 1901 in cooperation with the State of New York.

APPROXIMATE MEAN  
DECLINATION 1902.



USGS  
Historical File  
Topographic Division

Edition of Mar. 1904, reprinted Oct. 1906.

OCT 31 1906 2105

SANTANONI, N.Y.