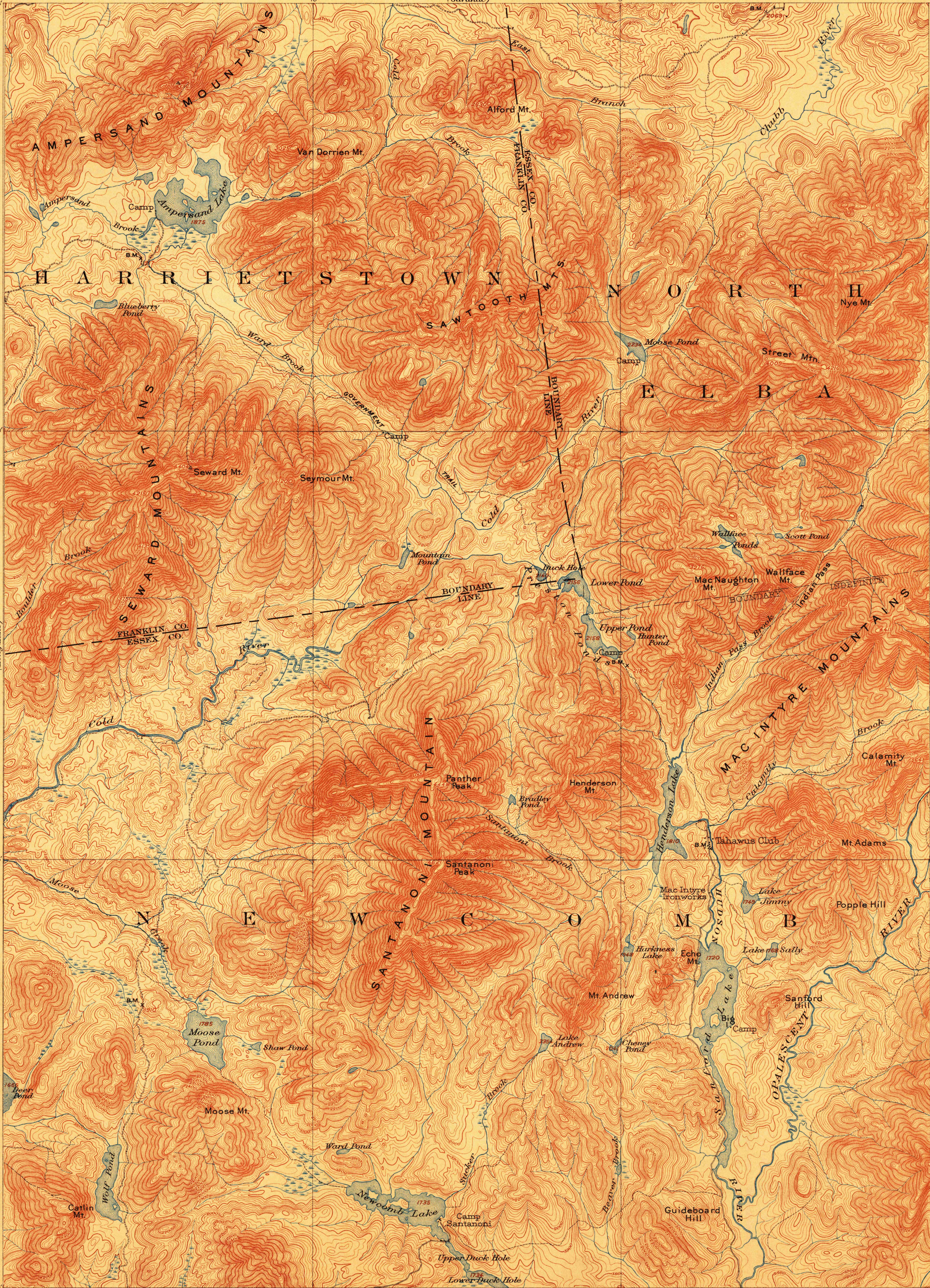


TOPOGRAPHY

STATE OF NEW YORK  
REPRESENTED BY THE  
STATE ENGINEER AND SURVEYOR  
(Saranac)

U.S. GEOLOGICAL SURVEY  
GEORGE OTIS SMITH, DIRECTOR

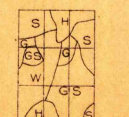
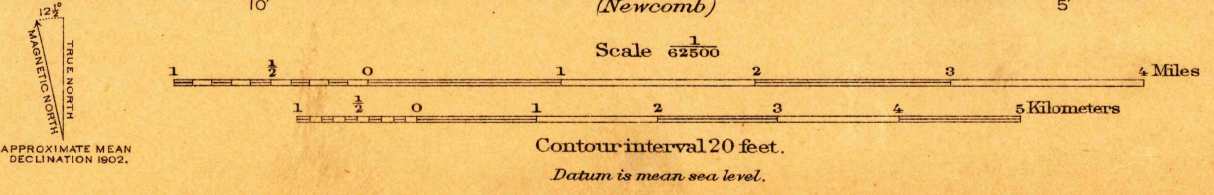
NEW YORK  
SANTANONI QUADRANGLE



U. S. G. S.  
FILE COPY  
Ed. Div. Topographic Maps.

U. S. G. S.  
FILE COPY  
Ed. Div. Topographic Maps.

ENGRAVED OCT. 1903 BY U.S.G.S.  
H.M. Wilson, Geographer in charge.  
Triangulation by E.L. McNair.  
Topography by Glenn S. Smith, E.G. Hamilton,  
Geo. H. Guerdum, J.M. Whitman, Jr., and T.F. Slaughter.  
Surveyed in 1901 in cooperation with the State of New York.



Edition of Mar. 1904, reprinted Sept. 1910.

OCT 20 1910 2592

SANTANONI, N.Y.