

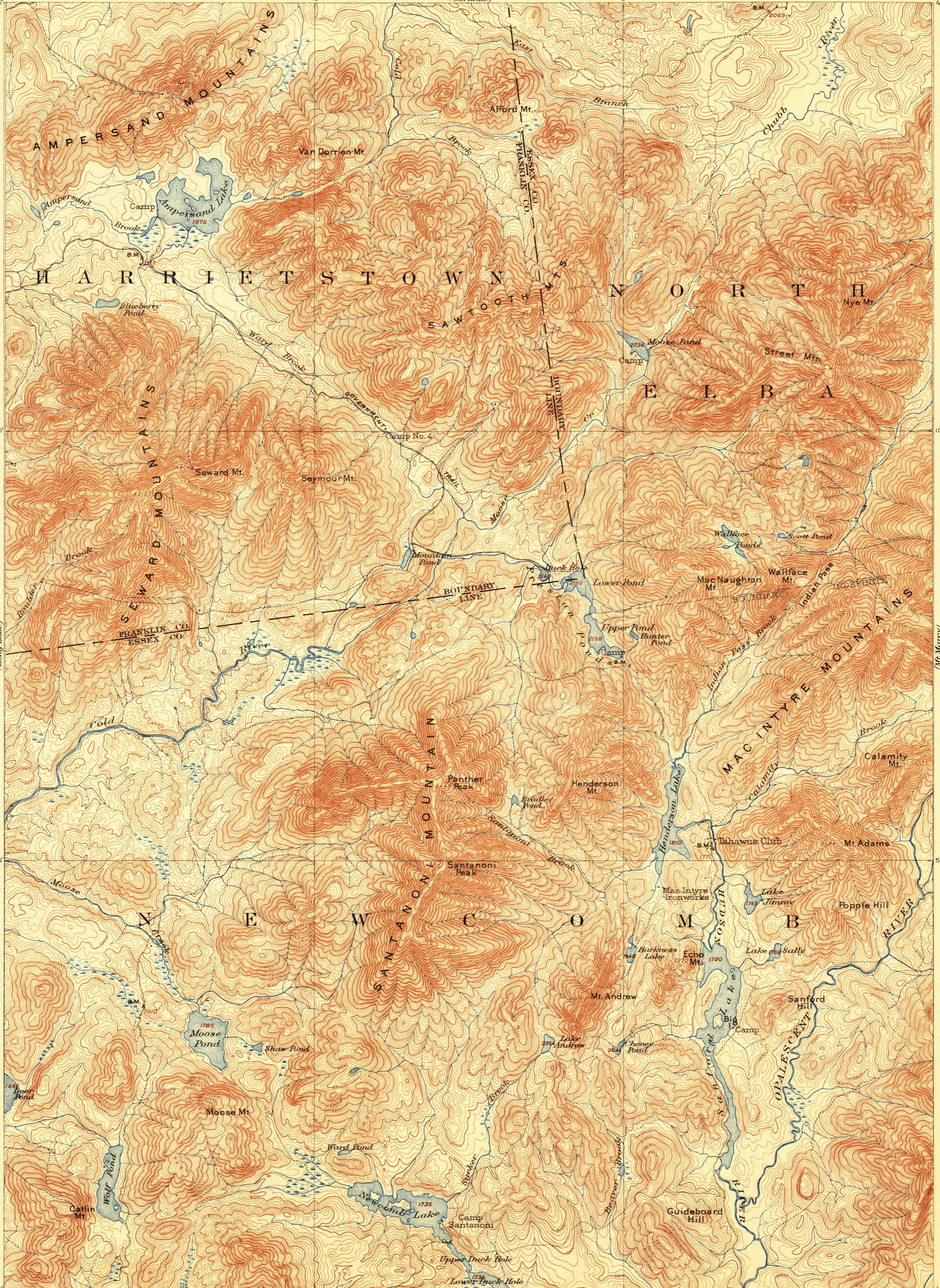
(St. Regis) 74°15' 44'15"

DEPARTMENT OF THE INTERIOR
U.S. GEOLOGICAL SURVEY

STATE OF NEW YORK
REPRESENTED BY THE
STATE ENGINEER AND SURVEYOR
(Saranac)

NEW YORK
SANTANONI QUADRANGLE

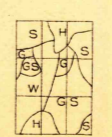
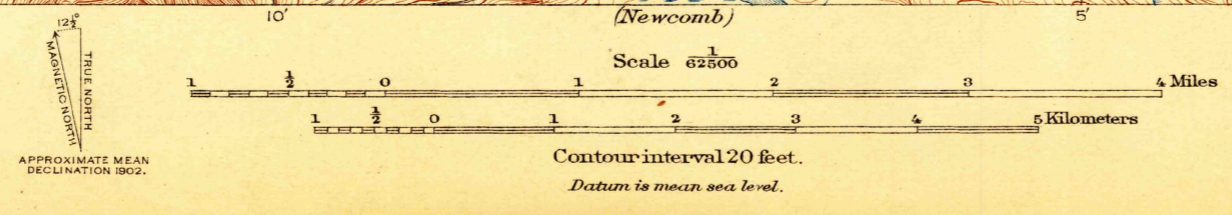
74°00' (Lake Placid) 44°15'



U. S. G. S.
FILE COPY
Inspection and Editing.

U. S. G. S.
FILE COPY
Inspection and Editing.

ENGRAVED OCT. 1903 BY U.S.G.S.
H.M. Wilson, Geographer in charge.
Triangulation by E.L. McNair.
Topography by Glenn S. Smith, E.C. Hamilton,
Geo. H. Guerdum, J.M. Whitman, Jr. and T.F. Slaughter.
Surveyed in 1901 in cooperation with the State of New York.



Edition of Mar. 1904, reprinted 1923.

USGS JUN 7 - 1923 4075
Historical File
Topographic Division
SANTANONI, N.Y.

4075