

U. S. G. S.
FILE COPY
Publication and Editing

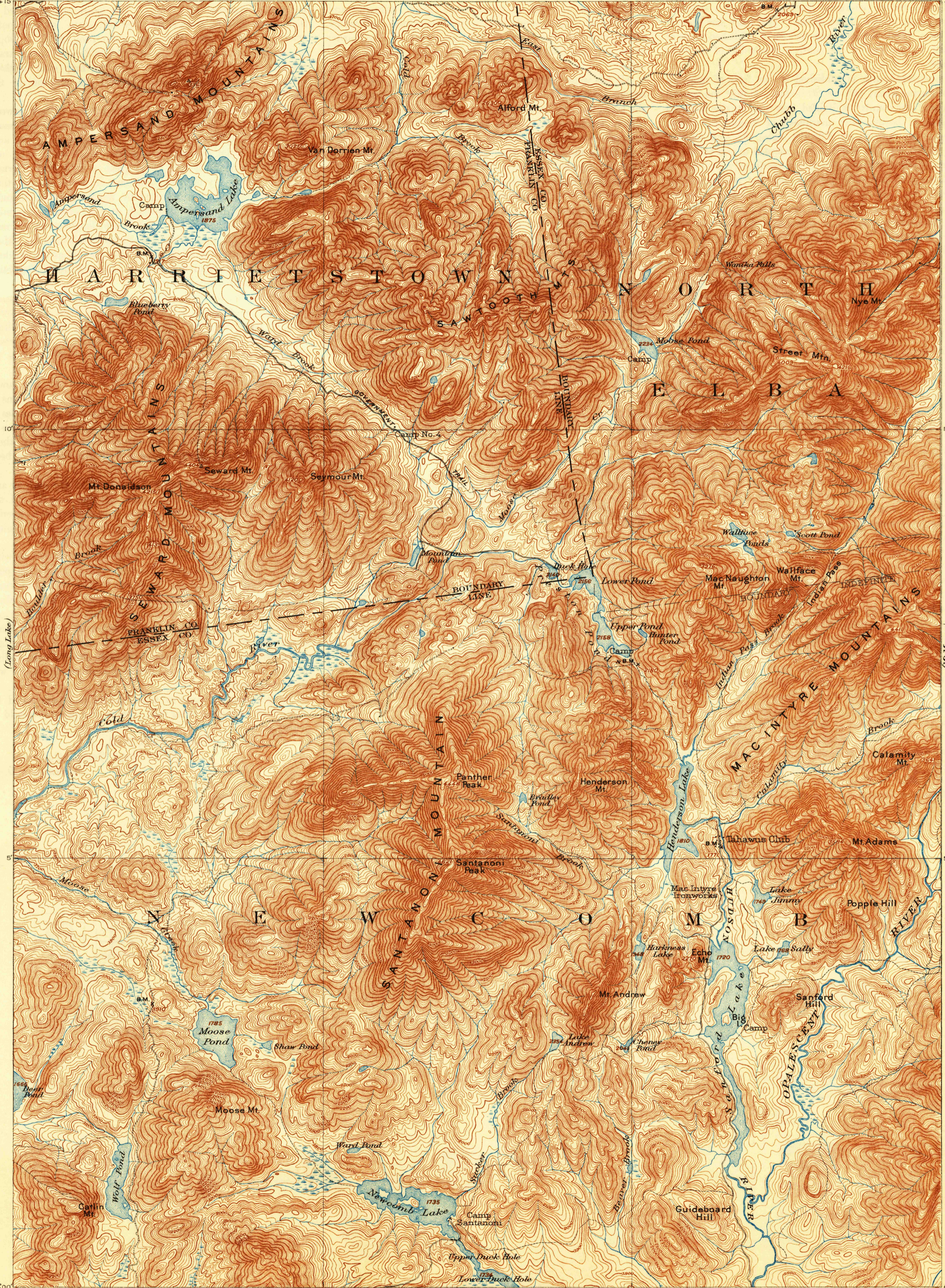
DEPARTMENT OF THE INTERIOR
U. S. GEOLOGICAL SURVEY

STATE OF NEW YORK
REPRESENTED BY THE
DEPARTMENT OF PUBLIC WORKS
(Saratoga)

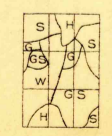
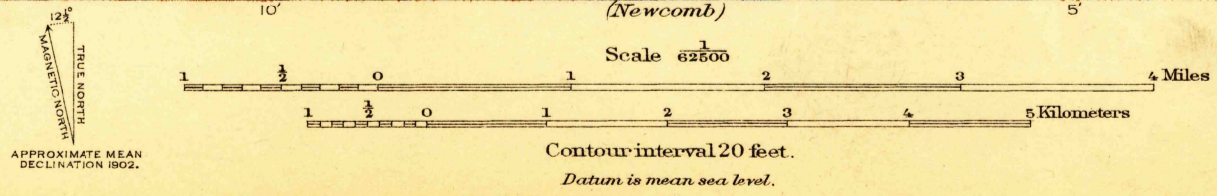
NEW YORK
SANTANONI QUADRANGLE

(St. Regis) 74°15'
44°15'

74°00' (Lake Placid)
44°15'



ENGRAVED OCT. 1903 BY U.S.G.S.
H.M. Wilson, Geographer in charge.
Triangulation by E.L. McNair.
Topography by Glenn S. Smith, E.G. Hamilton,
Geo. H. Guerdum, J.M. Whitman, Jr., and T.F. Slaughter.
Surveyed in 1901 in cooperation with the State of New York.



Edition of Mar. 1904, reprinted 1930.
Polyconic projection, North American datum

JAN 22 1930 (3525) SANTANONI, N.Y.

U.S.G.S.
Historical File
Topographic Division
Publication and Editing

3525