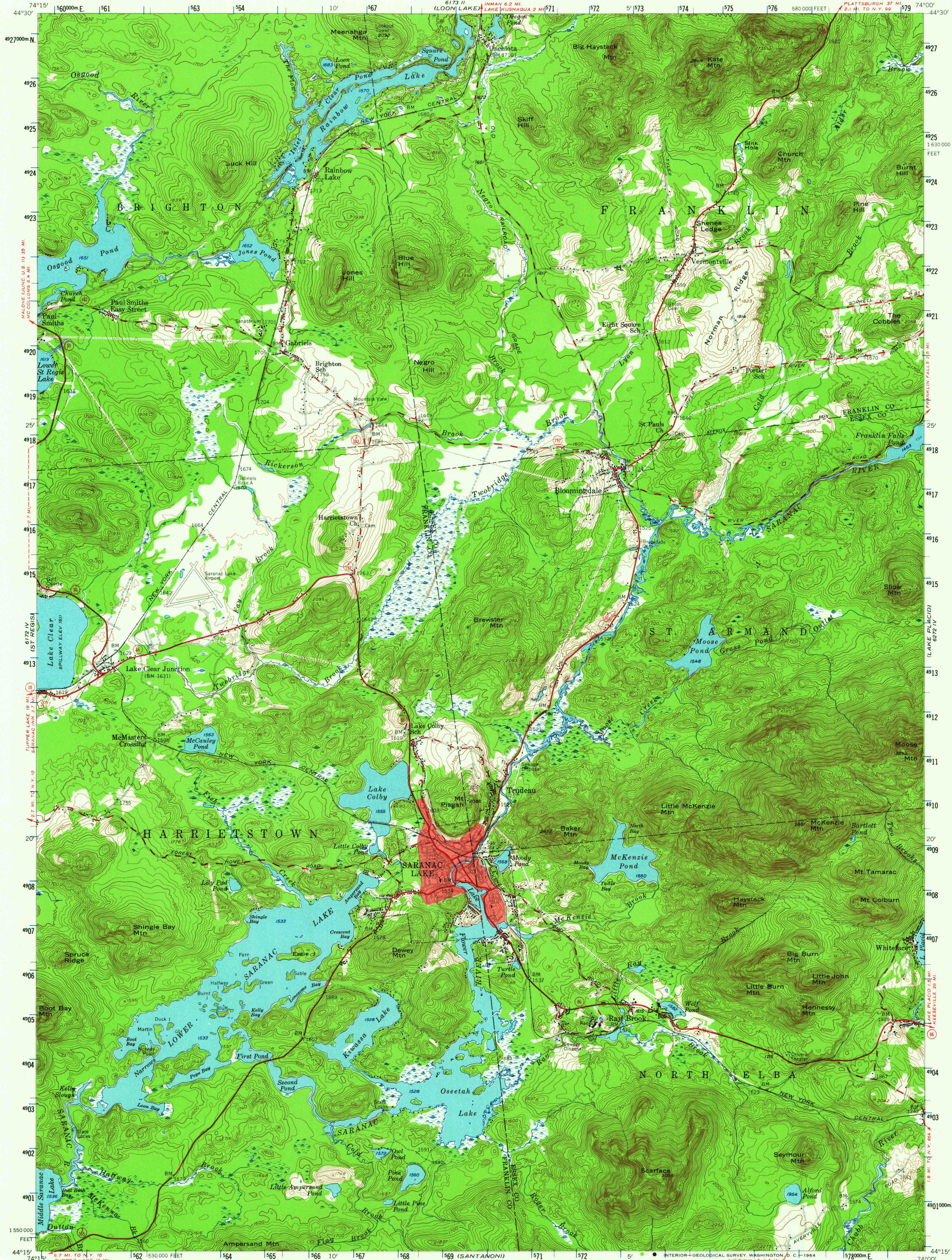
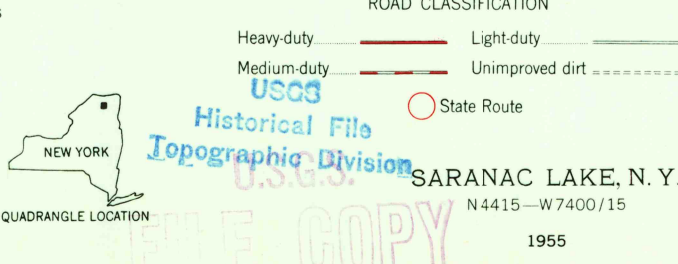
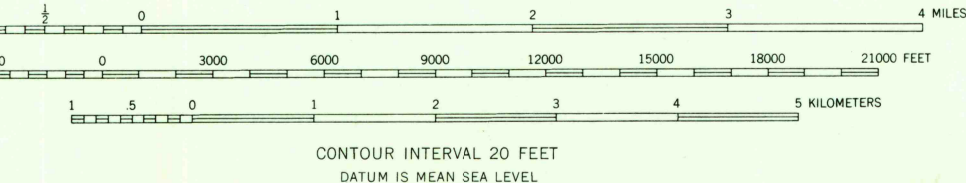
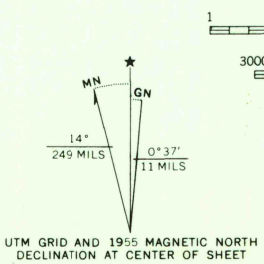


UNITED STATES  
DEPARTMENT OF THE INTERIOR  
GEOLOGICAL SURVEY

SARANAC LAKE QUADRANGLE  
NEW YORK  
15 MINUTE SERIES (TOPOGRAPHIC)



Mapped, edited, and published by the Geological Survey  
Control by USGS and USCGS  
Topography from aerial photographs by photogrammetric methods  
Aerial photographs taken 1953. Field check 1955  
Polyconic projection, 1927 North American datum  
10,000-foot grid based on New York coordinate system,  
east zone  
Entire map lies within Adirondack State Park  
Unchecked elevations are shown in brown  
Red tint indicates areas in which only  
landmark buildings are shown  
1000-meter Universal Transverse Mercator grid ticks,  
zone 18, shown in blue



THIS MAP COMPLIES WITH NATIONAL MAP ACCURACY STANDARDS  
FOR SALE BY U.S. GEOLOGICAL SURVEY, WASHINGTON 25, D.C.  
A FOLDER DESCRIBING TOPOGRAPHIC MAPS AND SYMBOLS IS AVAILABLE ON REQUEST



SARANAC LAKE, N.Y.  
N4415-W7400/15  
1955  
AMS 6172 I-SERIES V721

SEP 2 1964

8165