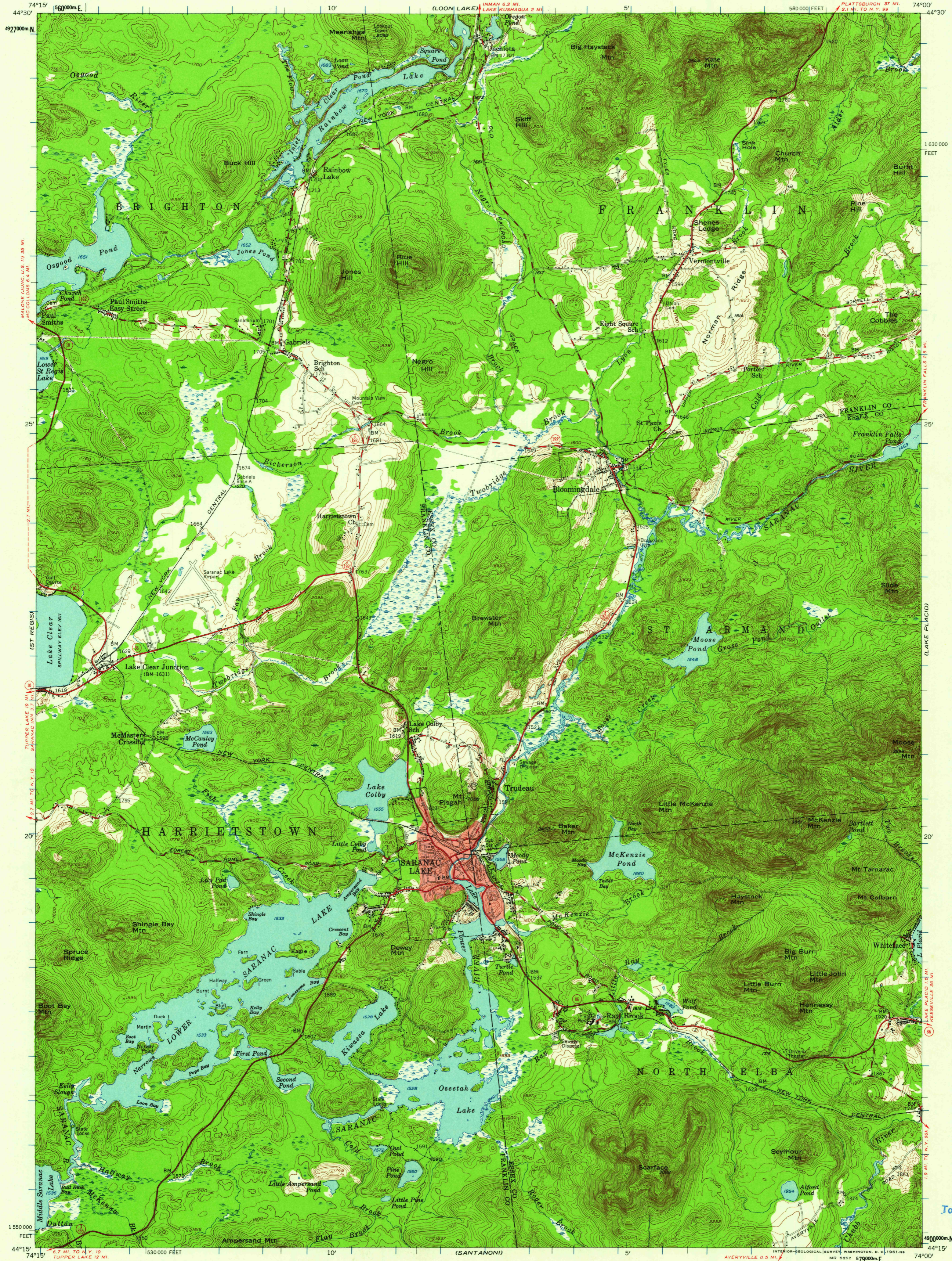


SANTA CLARA

UNITED STATES
DEPARTMENT OF THE INTERIOR
GEOLOGICAL SURVEY

SARANAC LAKE QUADRANGLE
NEW YORK
15 MINUTE SERIES (TOPOGRAPHIC)

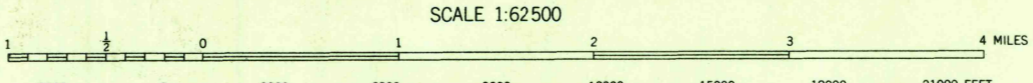
LYON MOUNTAIN



44°30' 74°15' 1600000 E. 10' 5' 1630000 FEET 74°00' 44°30'

1630000 FEET 25' 20' 1550000 FEET 44°15' 74°15' 1530000 FEET 10' 5' 1500000 FEET 74°00'

Mapped, edited, and published by the Geological Survey
Control by USGS and USC&GS
Topography from aerial photographs by photogrammetric methods
Aerial photographs taken 1953. Field check 1955
Polyconic projection. 1927 North American datum
10,000-foot grid based on New York coordinate system,
east zone
Entire map lies within Adirondack State Park
Unchecked elevations are shown in brown
Red tint indicates areas in which only
landmark buildings are shown
1000-meter Universal Transverse Mercator grid ticks,
zone 18, shown in blue



CONTOUR INTERVAL 20 FEET
DATUM IS MEAN SEA LEVEL

THIS MAP COMPLIES WITH NATIONAL MAP ACCURACY STANDARDS
FOR SALE BY U. S. GEOLOGICAL SURVEY, WASHINGTON 25, D. C.
A FOLDER DESCRIBING TOPOGRAPHIC MAPS AND SYMBOLS IS AVAILABLE ON REQUEST

ROAD CLASSIFICATION
Heavy-duty ——— Light-duty ———
Medium-duty ——— Unimproved dirt - - - - -
State Route ○



SARANAC LAKE, N. Y.
1415—W7400/15
U.S.G.S. 1955
FILE COPY
TOPOGRAPHIC DIVISION

USGS
Historical File
Topographic Division

MAR - 6 1961

6030