

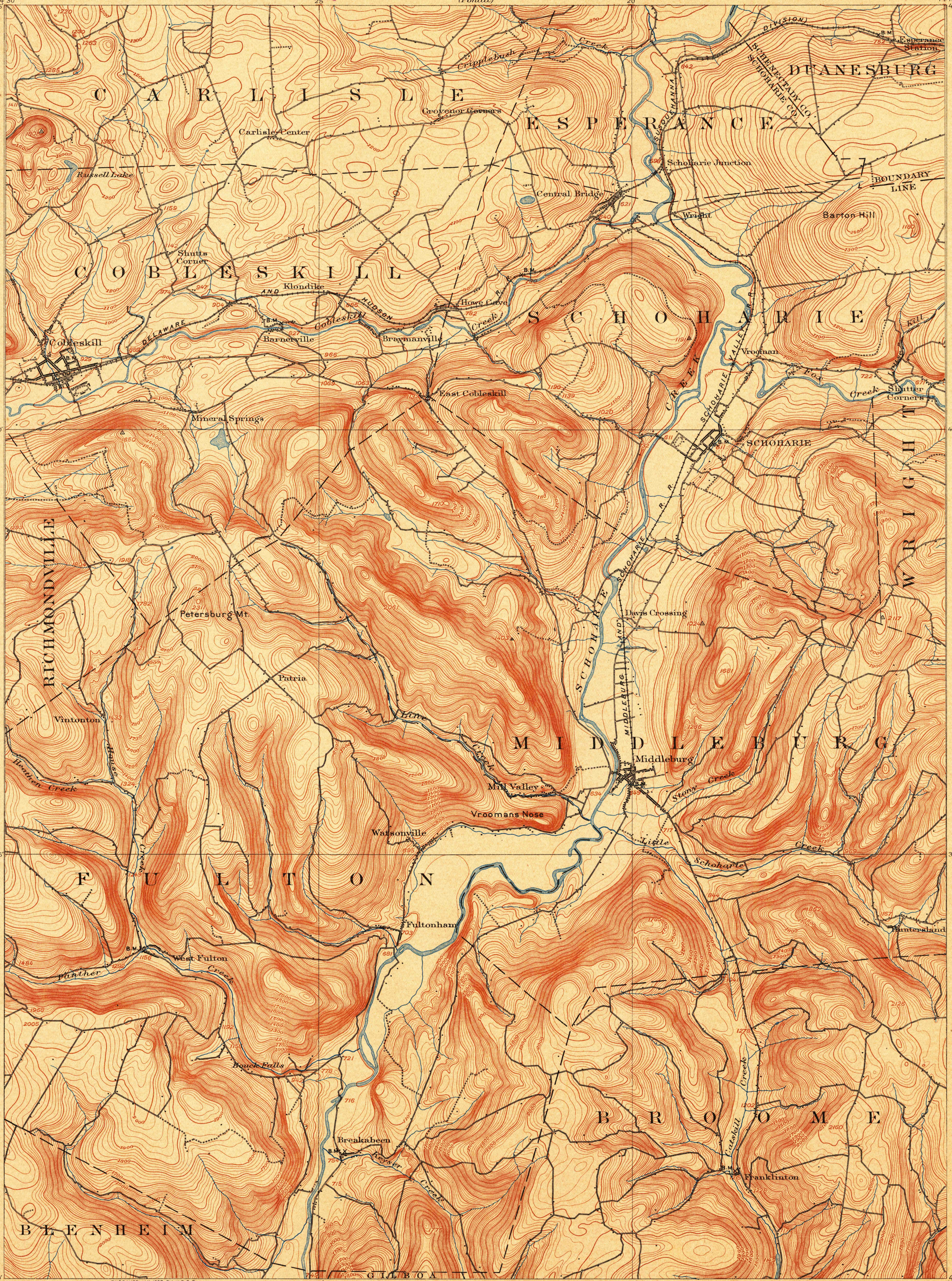
U. S. G. S.
FILE COPY
Ed. Div. Topographic Maps.

TOPOGRAPHIC SHEET

STATE OF NEW YORK
CAMPBELL WADAMS
STATE ENGINEER AND SURVEYOR
(Fonda)

NEW YORK
SCHOHARIE QUADRANGLE

U.S. GEOLOGICAL SURVEY
CHARLES D. WALCOTT, DIRECTOR



U. S. G. S.
FILE COPY
Ed. Div. Topographic Maps.

ENGRAVED JAN. 1890 BY U.S.G.S.
H.M. Wilson, Geographer in charge.
Triangulation by N.Y. State Survey.
Topography by C.C. Bassett.
Surveyed in 1898, in cooperation with the
State of New York.

U. S. G. S.
FILE COPY
Ed. Div. Topographic Maps.



USGS
Historical File
Topographic Division

U.S. Geological Survey,
OCT 17 1900 2570
Ed. Div. Topographic Maps.

Edition of Sept. 1900.