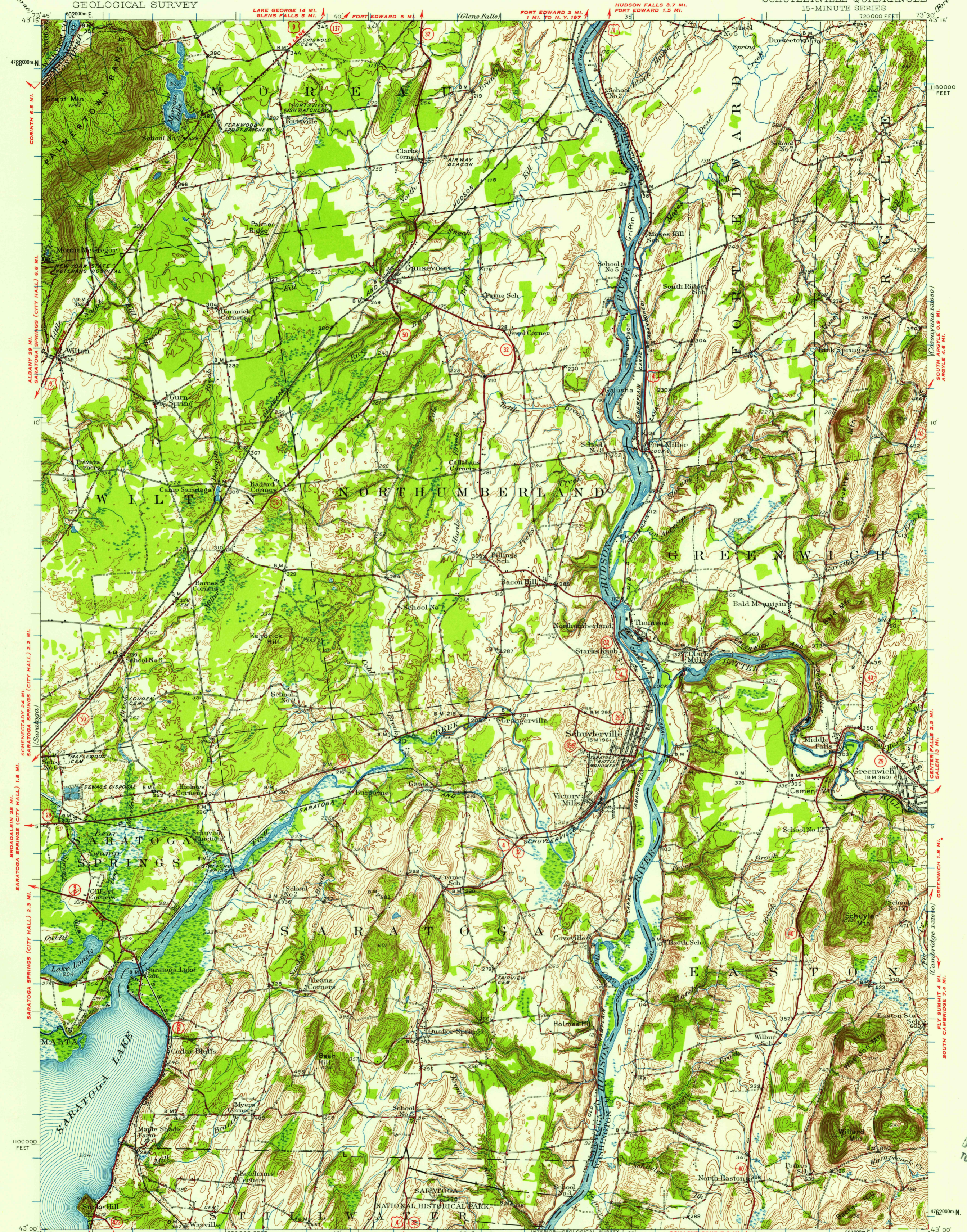


UNITED STATES
DEPARTMENT OF THE INTERIOR
GEOLOGICAL SURVEY

STATE OF NEW YORK
REPRESENTED BY THE
DEPARTMENT OF PUBLIC WORKS

NEW YORK
SCHUYLERVILLE QUADRANGLE
15-MINUTE SERIES



Map by the Geological Survey
1934, 1935
4 MI. TO U. S. S. STILLWATER CENTER 2.6 MI.
Revised 1947 4.8 MI. TO U. S. 4

ROAD CLASSIFICATION

HARD-SURFACE ALL WEATHER ROADS DRY WEATHER ROADS
Heavy-duty ——— 4 LANE LANE Improved dirt ———
Medium-duty ——— 4 LANE LANE Unimproved dirt ———
Loose-surface, graded, or narrow hard-surface ———

U. S. Route State Route

SCALE 1:62500

1 2 3 4 5 MILES

1 5 10 15 20 25 30 KILOMETERS

CONTOUR INTERVAL 20 FEET
DATUM IS MEAN SEA LEVEL

USGS
Historical File
Topographic Division

SCHUYLERVILLE, N.Y.
N4300—W7330/15

1947

Polyconic projection, 1927 North American datum
10,000-foot grid based on New York (East)
rectangular coordinate system
1000-meter Universal Transverse Mercator grid ticks,
zone 18, shown in blue

FOR SALE BY U. S. GEOLOGICAL SURVEY, WASHINGTON 25, D. C.
A FOLDER DESCRIBING TOPOGRAPHIC MAPS AND SYMBOLS IS AVAILABLE ON REQUEST

U.S.G.S.
FILE COPY
TOPOGRAPHIC DIVISION

FEB 11 1958

3565