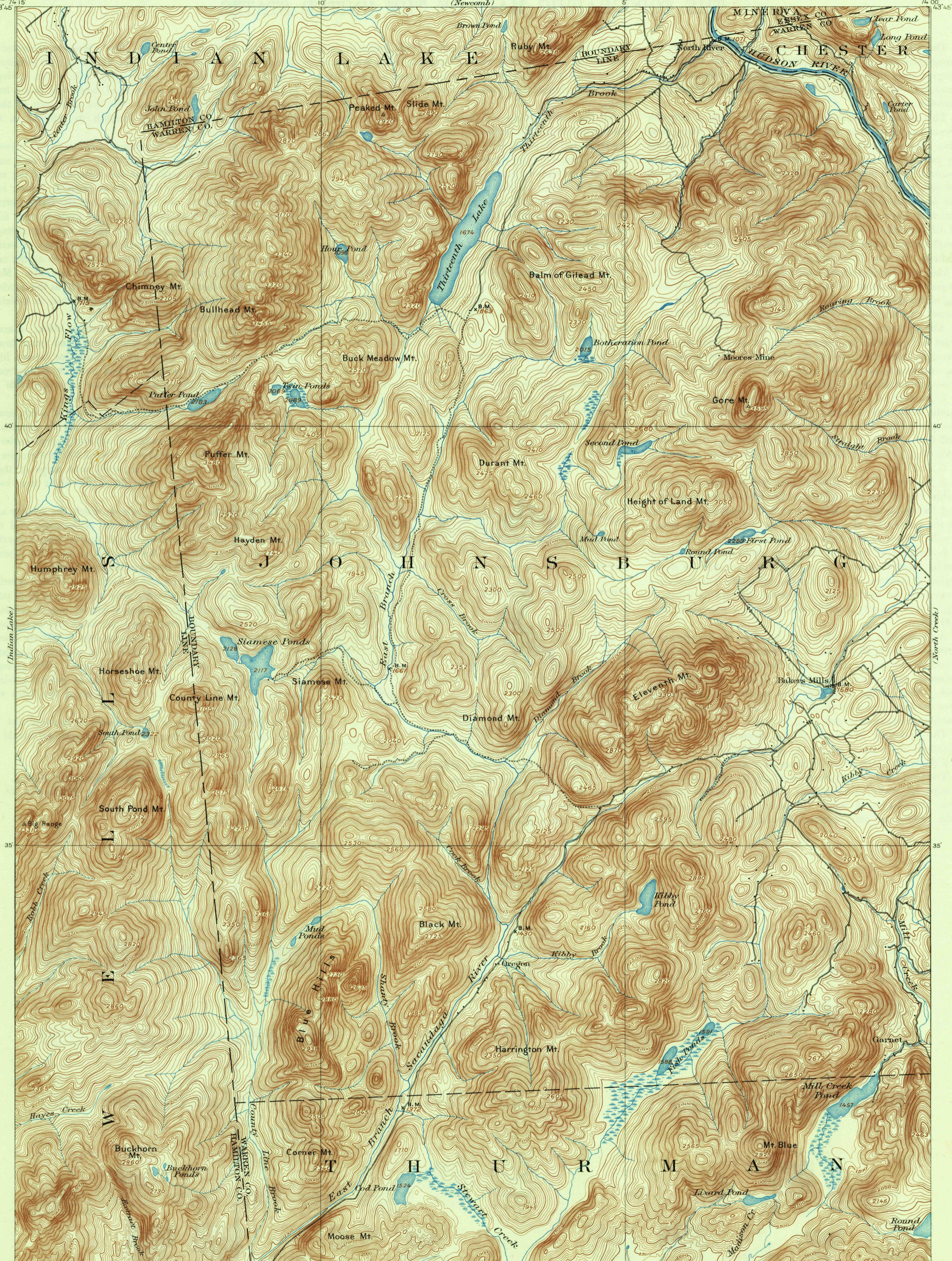
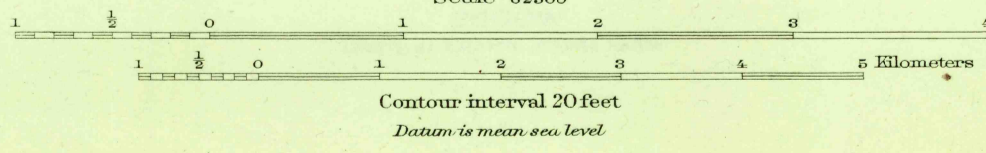
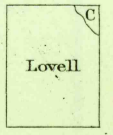


U.S.G.S.
FILE COPY
Inspection and Editing.



ENGRAVED DEC. 1897 BY U.S.G.S.
H.M. Wilson, Geographer in charge.
Triangulation by W.J. Peters.
Topography by W.H. Lovell and E.B. Clark.
Surveyed in 1896.



USGS
Historical File
Topographic Division

Edition of April 1898, reprinted 1936
Polyconic projection, North American datum

THIRTEENTH LAKE, N.Y.

NOV 19 1936 (280)

U.S.G.S.
FILE COPY
Inspection and Editing.