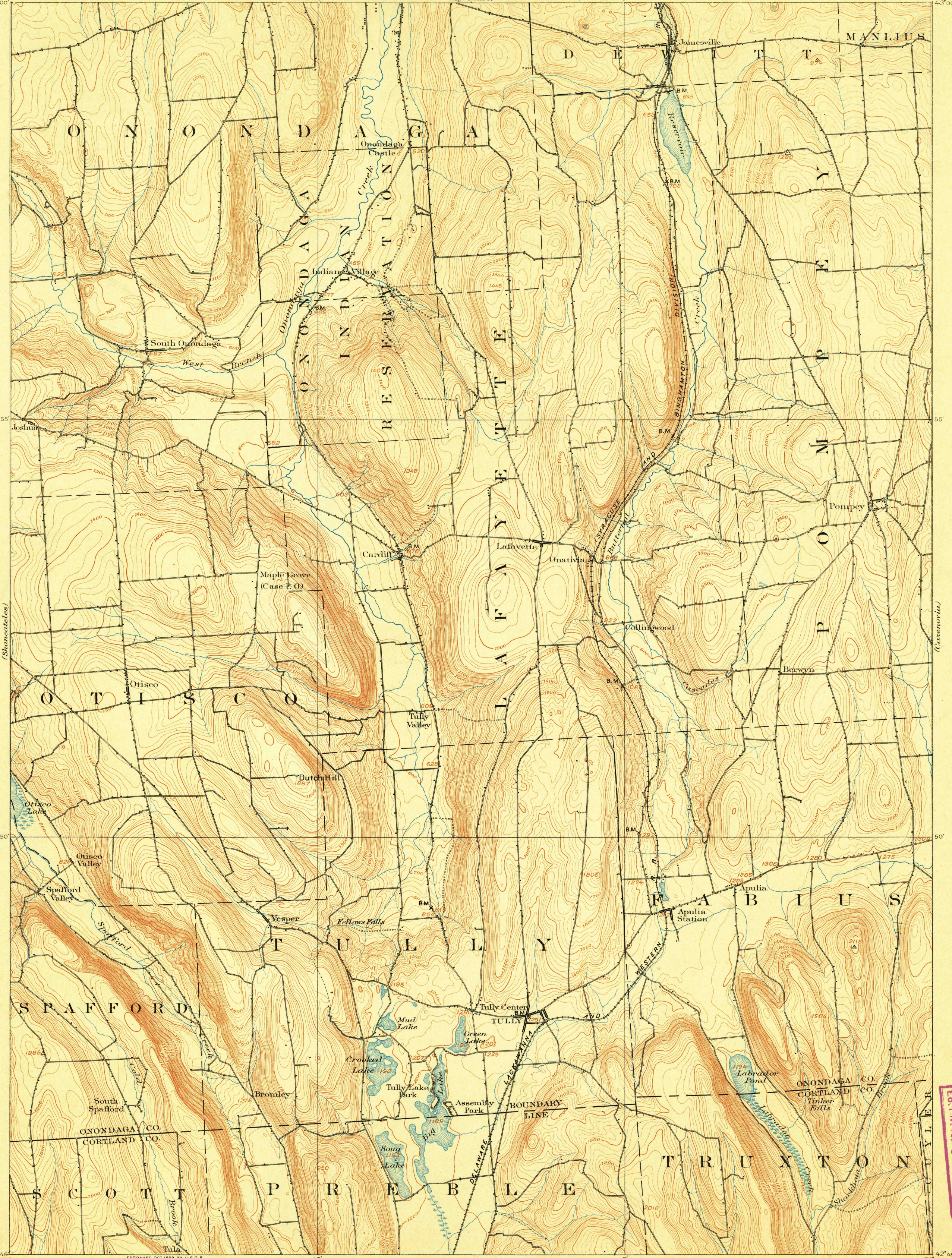


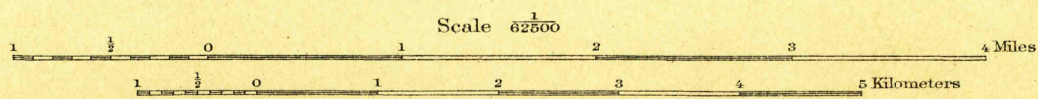
(Chittenango)



FILE COPY
Topographic Maps.

FILE COPY
U.S.G.S.
Ed. Div. Topographic Maps.

ENGRAVED OCT. 1899 BY U.S.G.S.
H.M. Wilson, Geographer in charge.
Control by N.Y. State Survey, W.M. Beaman, and C.C. Bassett.
Topography by C.C. Bassett.
Surveyed in 1897 in cooperation with the State of New York.



Scale 62500
Contour interval 20 feet.
Datum is mean sea level.

Edition of Jan. 1900, reprinted Jan. 1902.

USGS
Historical File
Topographic Division
U.S. Geological Survey,
FEB 28 1902
Ed. Div. Topographic Maps.

2142

Tully, N.Y.