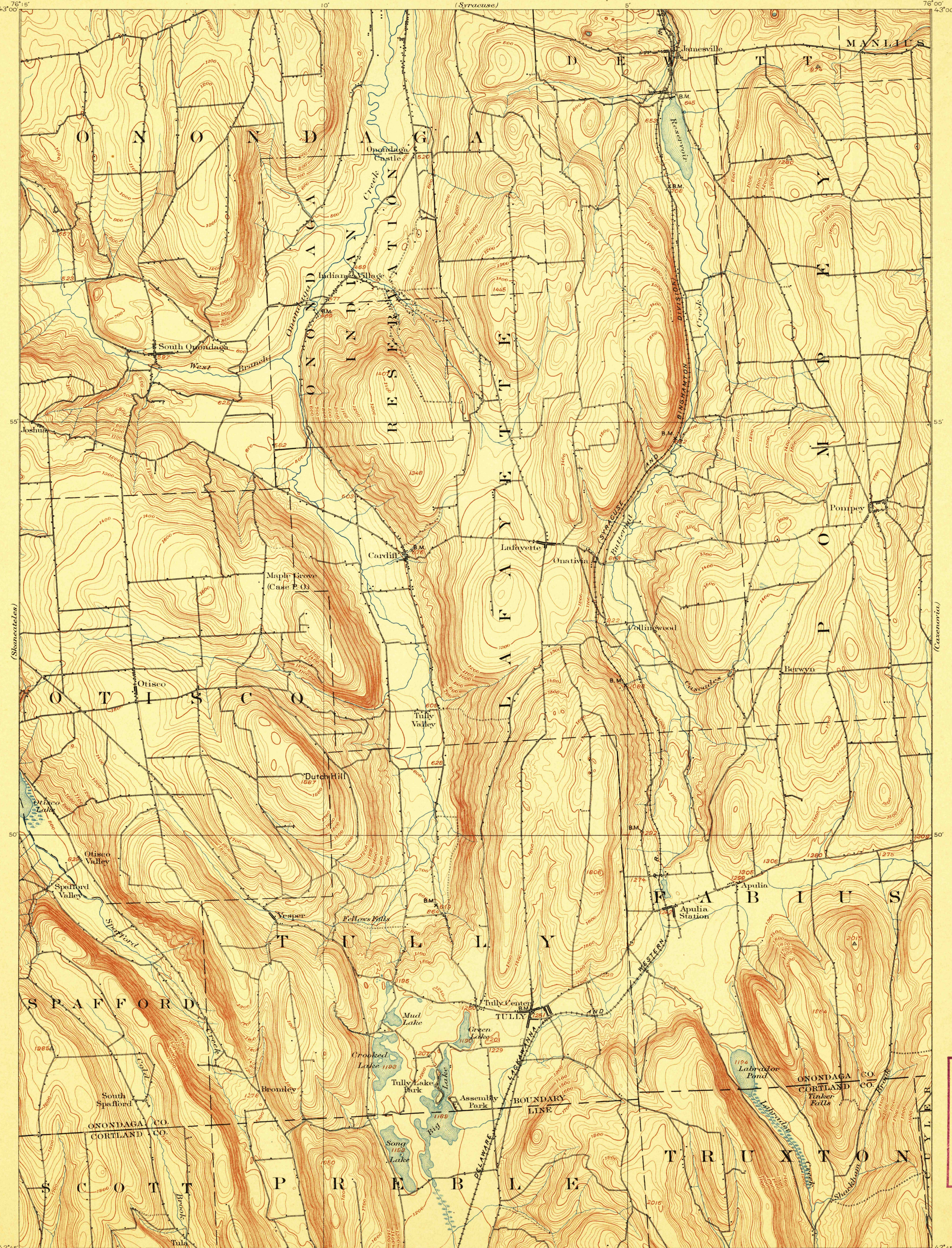


TOPOGRAPHY

STATE OF NEW YORK
REPRESENTED BY THE
STATE ENGINEER AND SURVEYOR
(Syracuse)

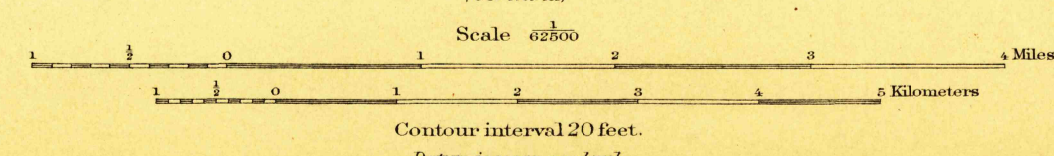
NEW YORK
TULLY QUADRANGLE

U.S. GEOLOGICAL SURVEY
CHARLES D. WALCOTT
DIRECTOR



U. S. G. S.
FILE COPY
Ed. Div. Topographic Maps.

H. M. Wilson, Geographer in charge.
Control by N. Y. State Survey, W. M. Beaman, and C. C. Bassett.
Topography by C. C. Bassett.
Surveyed in 1897 in cooperation with the State of New York.



Scale 62800
4 Miles
5 Kilometers
Contour interval 20 feet.
Datum is mean sea level.

USGS
Historical File
Topographic Division

Ed. Div. Topographic Maps.
Edition of Jan. 1900, reprinted Sept. 1906.

OCT 10 1906 2104

Tully, N.Y.