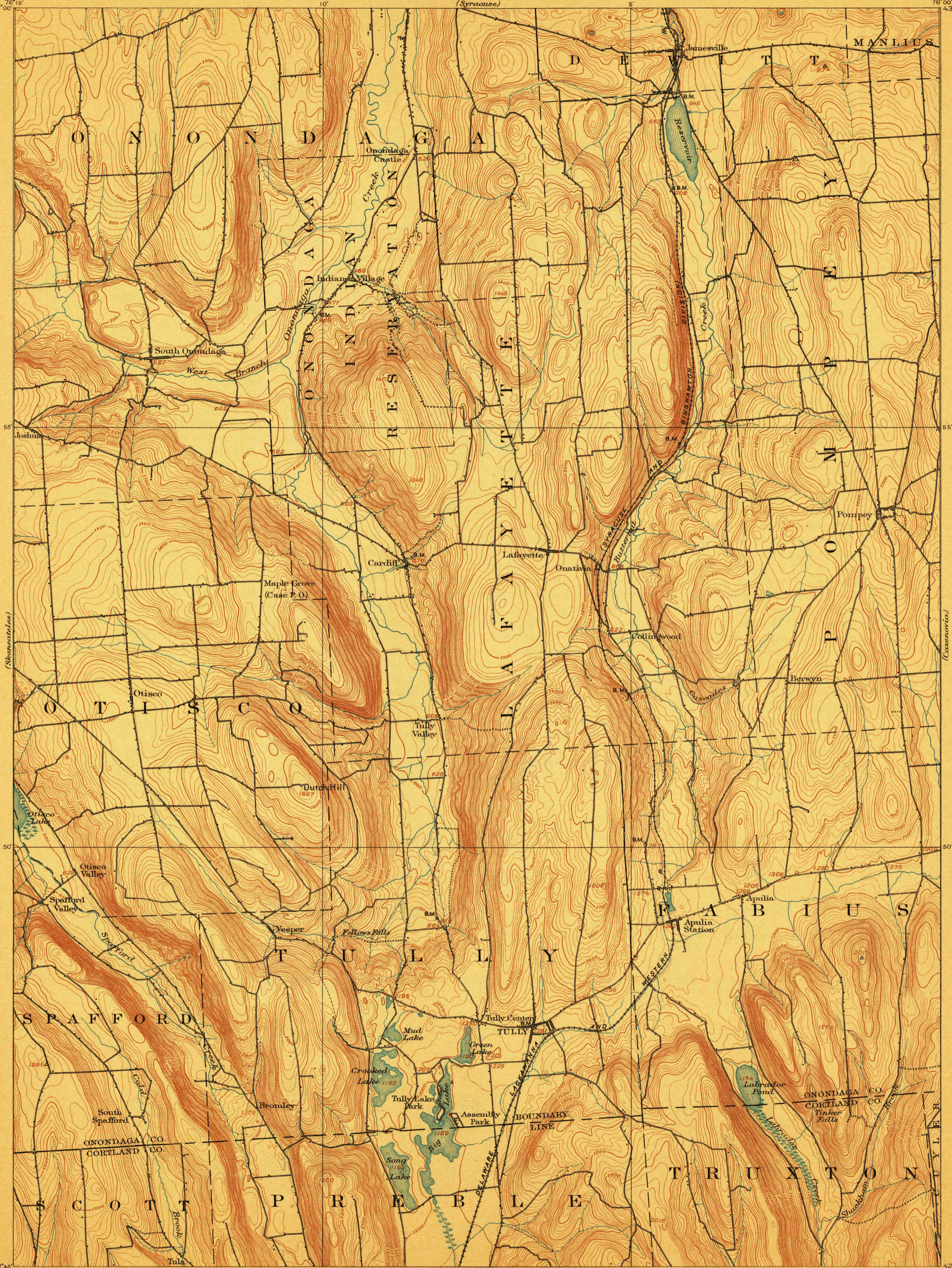


TOPOGRAPHY

STATE OF NEW YORK
REPRESENTED BY THE
STATE ENGINEER AND SURVEYOR
(Syracuse)

NEW YORK
TULLY QUADRANGLE

U.S. GEOLOGICAL SURVEY
GEORGE OTIS SMITH, DIRECTOR



U.S.G.S.
FILE COPY
Ed. Div. Topographic Maps.

U.S.G.S.
FILE COPY
Ed. Div. Topographic Maps.

H.M. Wilson, Geographer in charge.
Control by N.Y. State Survey, W.M. Beaman, and C.C. Bassett.
Topography by C.C. Bassett.
Surveyed in 1897 in cooperation with the
State of New York.

Scale 62500
Miles
Kilometers
Contour interval 20 feet.
Datum is mean sea level.

USGS
Historical File
Topographic Division

Edition of Jan. 1900, reprinted Dec. 1910.

DEC 31 1910 2629

TULLY, N.Y.