

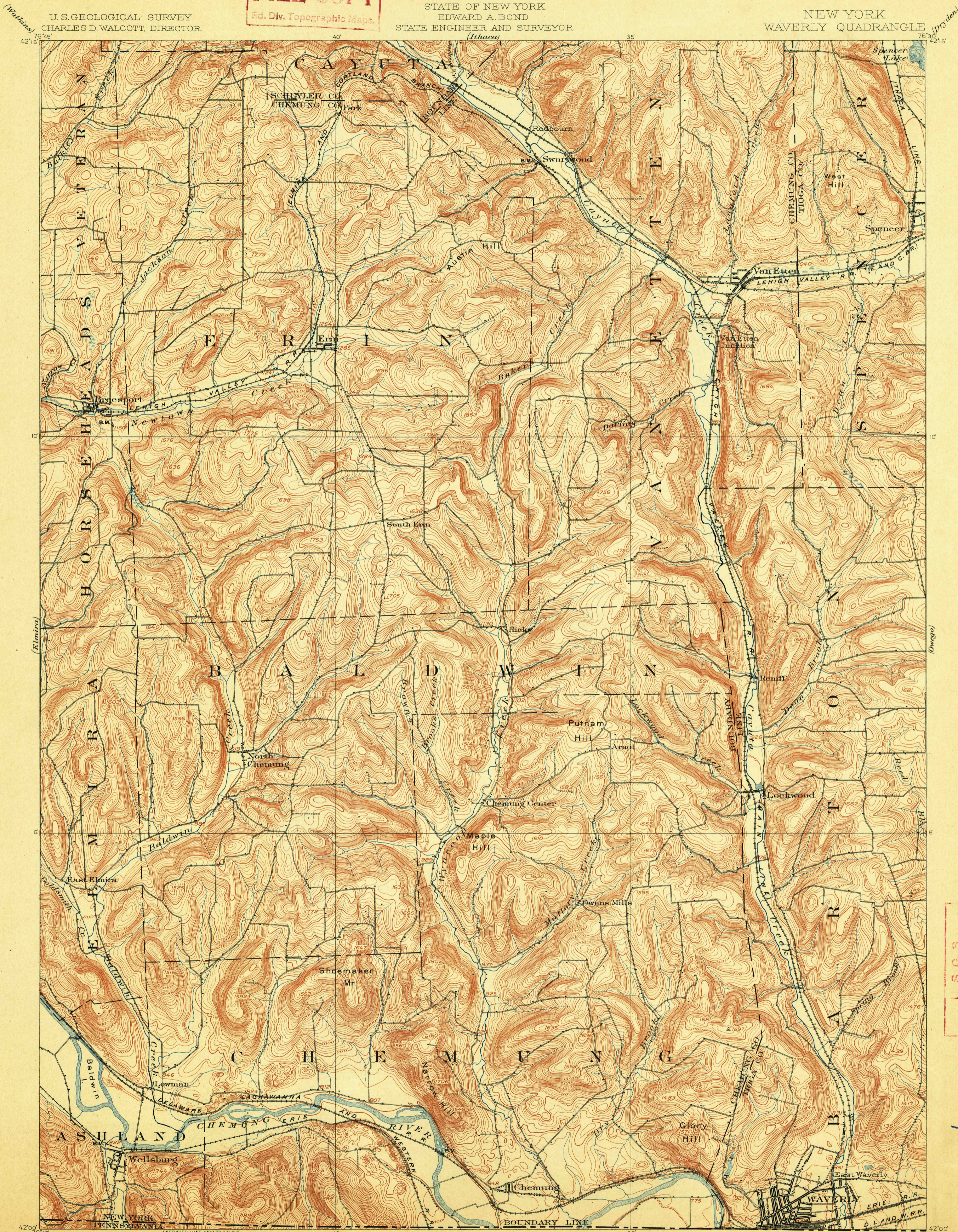
U.S.C.S.  
**FILE COPY**  
Ed. Div. Topographic Maps.

# TOPOGRAPHY

STATE OF NEW YORK  
EDWARD A. BOND  
STATE ENGINEER AND SURVEYOR  
(Ithaca)

NEW YORK  
WAVERLY QUADRANGLE

U.S. GEOLOGICAL SURVEY  
CHARLES D. WALCOTT, DIRECTOR

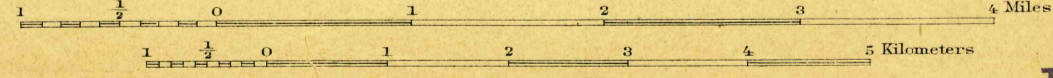


U.S.C.S.  
**FILE COPY**  
Ed. Div. Topographic Maps.

H.M. Wilson, Geographer in charge.  
Triangulation by N.Y. State Survey and R.D. Cummin.  
Topography by Nat. G. Van Doren.  
Surveyed in 1898-99 in cooperation with  
the State of New York.

APPROXIMATE MEAN  
DECLINATION, 1902

Scale 62500



USGS  
Historical File  
Topographic Division

U.S. Geological Survey  
NOV 30 1902 2560  
Ed. Div. Topographic Maps.

Waverly Ny

Edition of Nov. 1902.